



**FOR IMMEDIATE RELEASE**

**April 30, 2020**

## **PennDOT to Resume Work on Route 772 in East Donegal Township and Mount Joy Borough, Lancaster County**

*Base repair, drainage, and curb work scheduled in advance of asphalt paving.*

**Harrisburg, PA** – The Pennsylvania Department of Transportation (PennDOT) announced today that starting Wednesday, May 6, its contractor will resume work on a project to repair and resurface a 1.5-mile section of Route 772 (Anderson Ferry Road/Marietta Avenue) from just east of the intersection with Union School Road in East Donegal Township to the intersection with Delta Street in Mount Joy Borough.

Work beginning Wednesday includes drainage upgrades and widening at the intersection of Route 772 and Locust Lane. Traffic will be restricted to a single lane under daylight flagging. The road will be open to unrestricted traffic during evening hours.

These conditions will remain in place until Monday, June 1, after which Route 772 will be closed to through traffic from School Lane to New Haven Street in Mount Joy Borough. A detour will be in place during the closure using Angle Street and Main Street (Route 230). Access will be maintained to all residences within the work zone.

Work within this closed section of Route 772 includes drainage upgrades, widening and sidewalk and ADA curb ramp work.

The \$2,579,600 contract was awarded on June 11, 2019, to Pennsy Supply, Inc. of Annville, Lebanon County, and includes roadway base replacement, inlet adjustment and repair work, curb cut work required by the Americans with Disabilities Act, full-width milling of the top layer of asphalt, resurfacing the two-lane roadway and shoulders with a 3-inch Superpave warm-mix asphalt overlay, coordinated utility work, pavement reconstruction, sidewalk and curb installation between School Lane and New Haven Street connecting residences and businesses to the Milanof-Schock Library and public park, and installation of new signs and pavement markings. Work under this construction contract is scheduled to be completed by the end of November 2020.

Route 772, known as Marietta Avenue in Mount Joy, averages more than 5,600 vehicles traveled daily. To avoid delays, travelers should allow for additional time in their plans or seek an alternate route.

Travelers are reminded to be alert for these operations, to obey work zone signs, and to slow down when approaching and traveling through work zones for their safety as well as for the safety of the road crews.

For more information on projects occurring or being bid this year, those made possible by or accelerated by the state transportation funding plan (Act 89), or those on the department's Four and Twelve Year Plans, visit [www.projects.penndot.gov](http://www.projects.penndot.gov).

Subscribe to PennDOT news in Adams, Cumberland, Dauphin, Franklin, Lancaster, Lebanon, Perry, and York counties at [www.penndot.gov/District8](http://www.penndot.gov/District8).

Motorists can check conditions on more than 40,000 roadway miles by visiting [www.511PA.com](http://www.511PA.com). 511PA, which is free and available 24 hours a day, provides traffic delay warnings, weather forecasts, traffic speed information, and access to more than 950 traffic cameras, 101 of which are in the Midstate.

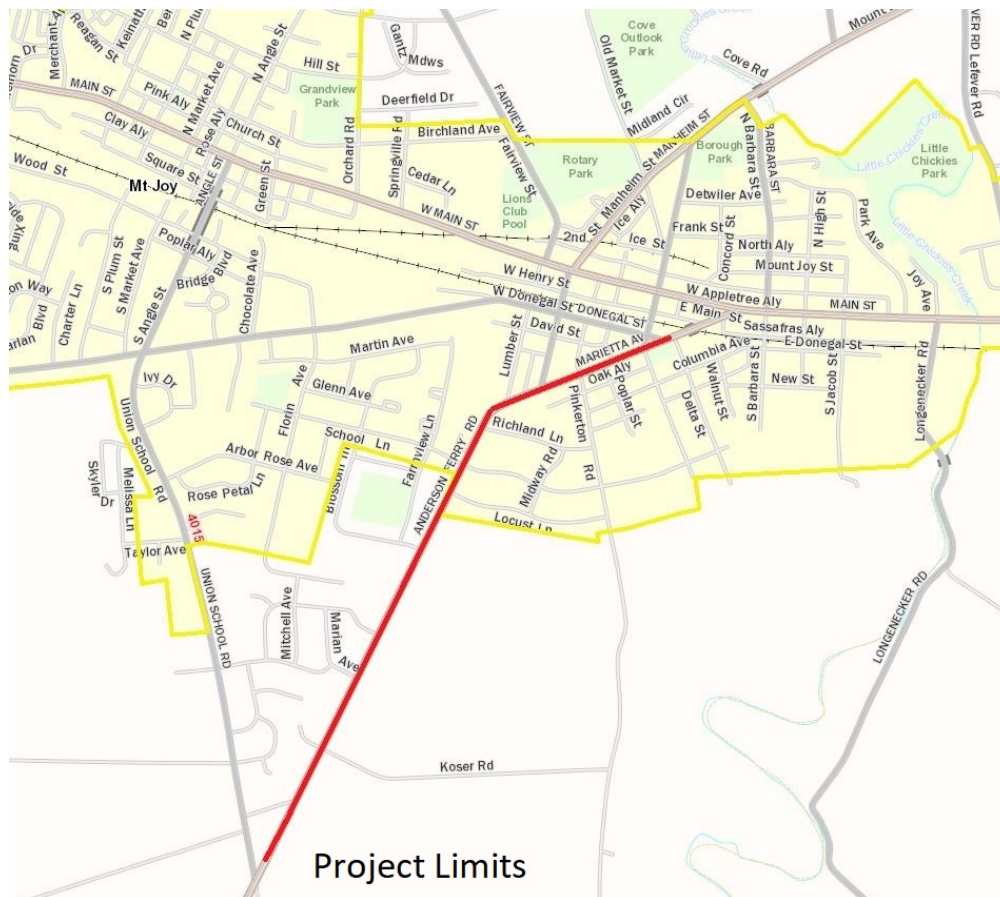
511PA is also available through a smartphone application for iPhone and Android devices, by calling 5-1-1, or by following regional twitter alerts accessible on the 511PA website.

**MEDIA CONTACT:** Dave Thompson, 717-418-5018

**Source:** PennDOT Engineering District 8

**Editor's Note:** Please refer to the accompanying project location map.

###





Section closed after June 1