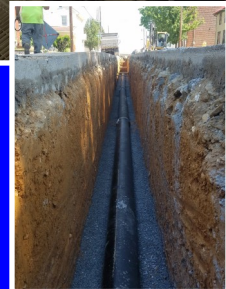
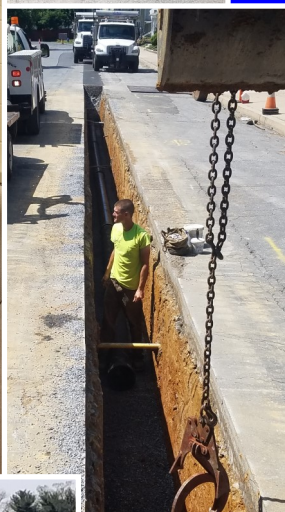
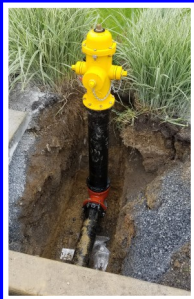
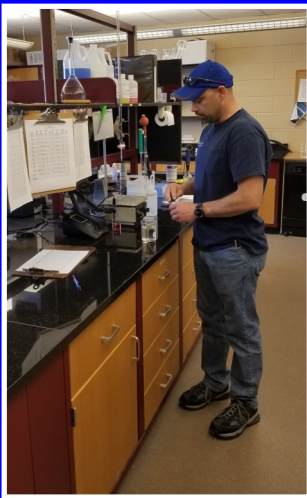


# Mount Joy Borough Authority 2018 Annual Report



# Mount Joy Borough Authority Table of Contents

Table of Contents, Replacing your Curb of Sidewalk, SwiftReach	Page 2
A Message from the Authority Board Chairman	Page 3
Board of Directors & Officers, Authority Staff	Page 4
Authority Staff	Page 5
Authority Administrator's Message	Page 6
Authority Administrator's Message, Regulations Regarding Water Main Breaks	Page 7
Water & Sewer Rates, PA One Call	Page 8
Things You Can Do to Prevent Water Waste	Page 9
Past, Current & Future Grant Applications, The Current State of Your Water	Page 10
A Few Things to Check, Work Orders	Page 11
Recently Completed & Current Projects	Page 12
Consumer Confidence Report	Page 13-16
Wastewater System Budget	Page 17
Water System Budget	Page 18
Service Area Map	Page 19
Hydrant Flushing	Back

## *Are You Replacing Your Curb and/or Sidewalk?*

While your sidewalk contractor is removing your old sidewalk, it is very wise to dig a little further to check the condition of your water service line. If it is a galvanized line, you should consider replacing it with new copper line before spending the money on your new sidewalk knowing an old water line is located under it.

Many times shortly after pouring the new concrete sidewalk, the disturbance from the construction causes the old line to leak resulting in the new sidewalk having to be dug up. If you have your contractor carefully expose the water line, Authority staff will be happy to inspect it free of charge.

Also, your contractor should be sure that the curb valve box is perfectly straight and over the valve. In order not to pour concrete against the curb box lid, wrapping duct tape around the lid works well.

If you are planning any curb and sidewalk replacement and are unsure of your situation relative to your water line, feel free to contact the Authority Office for assistance.



Mount Joy Borough Authority has contracted with SWIFT Reach Network to have an immediate response mechanism to alert you of any important news relative to your water/sewer service. Currently we have basic information for most property owners. You are able to access this file to add/change items, such as cell phone or other electronic devices such as e-mail. Please visit [www.mountjoyborough.com](http://www.mountjoyborough.com) and click on the link to the left that says "Police", then follow to the link that says "Swift 911 Emergency" to submit your information electronically. This system will also be available for use by the Borough and Police Department to alert you of emergencies. If you do not have internet access, please call the Authority Office at 717-653-5938 so we can update your information for you.





# A Message From The Authority Board Chairman

As you will see, the 2018 Annual Report will highlight both a busy and exciting year for Mount Joy Borough Authority (MJBA).

Construction on the South Jacob Street Water Plant project started in the fall of 2017 and is progressing well through 2018.

We are anticipating that the plant will become functional in late 2018, this additional plant will offer an added secondary water source benefit to our existing and future customers. MJBA staff will continue with the water meter replacement program in 2018, to date we have been able to replace our Industrial, Commercial and Public water meters and anticipate finishing the Mixed-Use water meters this year. Carmany Road Water Plant will see a refurbishment of the Nitrate Removal media this year, this process treatment was placed into service in the early 90's and has functioned well over the years. The Authority is taking a proactive approach for replacement of the nitrate media as opposed to waiting until the media is exhausted, we were also fortunate to receive a PA Small Water and Sewer Programs Grant through the PA Commonwealth Financing Authority to offset some of the capital costs.

Daily operations of the water & wastewater facilities are conducted by highly trained operators that have acquired licenses through PA Dep. As of this date, we have a total of twelve employees that have a license in water, wastewater or both and encourage its remaining employees to accomplish this status.

Throughout this report, you will again see that our water & wastewater systems continue to grow and evolve. MJBA's Board of Directors & Officers will continue its efforts in providing a service that meets all state and federal requirements and steer the Authority in a direction that is beneficial to its purpose and customers.

I encourage you as a customer to read through the articles and reports contained within this Consumer Confidence Report. See below the current status of our employees pertaining to their PA Dep licensing.

<u>Name</u>	<u>Position</u>	<u>Certification/Licensing</u>
John Leaman	Authority Manager	Water and Sewer License
Joe Ardini	Assistant Authority Manager	Water and Sewer License
Barry Geltmacher	Chief Operator/Water Plant	Water License
Scott Kling	Operator/Water Plant	Water License
Zachary Dennis	Operator/Water Plant	Water and Sewer License
Scott Kapcsos	Project Administrator/Inspector	Water License
Jim Zink	Construction/Water Plant	Water License
Jason Bowers	Construction/Water Plant	Water License
Dennis Hardman	Chief Operator/Sewer Plant	Sewer License
Gary Karichner	Operator/Sewer Plant	Sewer License
Ralph Eckels	Operator/Sewer Plant	Water and Sewer License
David Piatt	Operator/Sewer Plant	Water and Sewer License
Bret Babula	Construction/Sewer Plant	Sewer License in Process

# Board of Directors & Officers

Back Left to Right:  
Richard Hamm, John Hiestand,  
Christopher Metzler

Front Left to Right:  
John D. Rebman, Larry Derr

The Board of Directors & Officers meet  
on the first and third Tuesday of each  
month at 4 PM.



## Mount Joy Borough Authority Staff

### Administration



(Pictured from left to right)

Lindsey Edgell  
Administrative Assistant- 16 yrs  
John Leaman  
Administrator/Manager (W-A1 / S-A1) - 32 yrs  
Joe Ardini  
Assistant Authority Manager  
(S-A1 / W-A1) - 21 yrs  
Angie Fenicle  
Business Manager- 19 yrs



# Mount Joy Borough Authority Staff

## Water Department



(Pictured from left to right)  
Barry Geltmacher: Chief Operator (W-A1) -25 yrs  
Scott Kapcsos: Construction Supervisor (W-B1) -7 yrs  
Scott Kling: Operator (W-A1) -11 yrs  
Zachary Dennis: Operator (WA-1/SA-1) -4 yrs  
Jason Bowers: Construction Laborer (W-A1) -19 yrs  
Jim Zink: Operator/Const. Laborer (W-A2) -39 yrs

## Wastewater/Construction Department



(Pictured from left to right)  
Wayne Kauffman: Part-Time Maintenance -2 yrs  
Bret Babula: Operator -4 yrs  
Dennis Hardman: Chief Operator (S-A1) -19 yrs  
David Piatt: Operator (W-A1/S-A1) -5 yrs  
Gary Karichner: Operator (S-B1) -11 yrs  
Ralph Eckels: Operator (S-A1/W-A1) -20 yrs

# A Message From The Authority

The Mount Joy Borough Authority (Authority) is an "operating authority" providing water and wastewater services to over 4,950 commercial, industrial and residential accounts. The population served is approximately 14,800 people from Mount Joy Borough and portions of Mount Joy, East Donegal and Rapho Townships.

The Authority provides two separate services to our customers, one is to provide a safe potable supply of water to meet system demand and the second service is to provide effective treatment of wastewater to comply with state and federal regulations. In addition to the water and wastewater treatment plants, the Authority operates, maintains and upgrades the water distribution system and wastewater collection system. The Authority's service area map is shown on the inside of the back cover.

Each year I provide our customers with information on projects relating to the wastewater and water systems which have been completed during the year, currently being constructed or are slated for future projects. In addition to the needs of the Authority's facilities for regulatory compliance or efficiency improvements the Authority also has the duty to continue upgrades to the water distribution and sewer collections systems. A sizable portion of the water system is cast iron water mains and the sewer system is terra-cotta piping. The projects the Authority undertakes must be made to continue to improve operations and service today, as well as for future demands.

Over the last year, the Authority completed upgrades at the Wastewater Treatment Plant which consisted of the replacement of the sludge pumps, as well as electrical conduit replacements to the Clarifier Treatment Equipment. In the collection system, Pump Station #4 received upgrades to the electrical system that included new control panels, relays and alarm system. Moving into 2019, the Authority is evaluating upgrades to the Clarifiers which include new mechanical drive systems and other associated equipment.

During 2017, the Authority completed three separate water main upgrades with the installation of new ductile iron water mains and fire hydrants. The first upgrade on W. Main Street replaced 350 feet of water main, the second upgrade on New Haven Street replaced 900 feet of water main and the third upgrade on Anderson Ferry Road replaced 400 feet of water main. Project upgrades like these provide benefits of replacing aging cast iron water mains, water quality enhancements and improving fire protection. All three water main upgrades were completed by Authority employees to minimize cost expenditures. The Marietta Avenue Project was completed with team efforts from both the Mount Joy Borough Public Works employees and Authority employees.

In the Annual Report last year, I reported the Authority was actively moving forward with construction of a new water treatment plant. In June 2017, the project was awarded to the following contractors: (1) General Construction, Pact Two LLC., (2) Electrical Construction, Garden Spot Electric, (3) HVAC Construction, W.C. Eshenaur & Sons. and (4) Plumbing Construction, Garden Spot Mechanical. The project commenced in August and has an estimated completion of 15 months for operation.



# Administrator John Leaman

The new water plant will have treatment processes which include membrane filtration, nitrate reduction, softening and disinfection. The facility is being constructed on Authority property on South Jacob Street which is the same location where the Borough's compost operations are staged.

The new facility will offer benefits which include increased pumping capacity, provide flexibility to complete improvements to the existing Carmany Road Plant and have a new well which is in a separate aquifer from Wells 1 & 2. The Authority continues to explore for new water sources which will provide a layer of safety to our customers in the event a water supply was to be compromised.

Also in last year's report I reported the Authority secured municipal bond financing for the project at the end of 2016. The debt service associated with the borrowing will be phased in over a 5-year period to provide the Authority the opportunity to adjust water rates in a controlled manner.

Recently, a new budget was adopted for the Authority's fiscal year and we are pleased to report the water and sewer rates will remain the same for the new fiscal year. Moving forward, the Authority will evaluate the need for future water and or sewer rate increases.

The Authority board and staff never want to lose sight of what is most important, that is you our customers. Our goal is to provide a system that will permit uninterrupted service to you and future generations. This service can be accomplished even in an environment that is heavily regulated by State and Federal Agencies. We encourage you to contact us at any time with questions or suggestions. I can be reached at the Mount Joy Municipal Center by phone at 717-653-5938 or by e-mail at [john@mountjoypa.org](mailto:john@mountjoypa.org).

Respectfully,

John Leaman, Authority Administrator

## Regulations from DEP Regarding Water Main Breaks

There is very specific protocol required by DEP (Department of Environmental Protection) when a water main break occurs. Depending on how and what type of break happens, precautionary boil notices will be put out. When you see the boil notice, there isn't necessarily a problem; we are just following DEP protocol. Please feel free to contact the Mount Joy Borough Authority at 653-5938 if you see a boil notice and have any questions.



# Board Approves Budget With NO Rate Increase



Mount Joy Borough Authority strives to keep water and sewer rates as low as it will allow. MJBA also continues to stay in compliance with the Chesapeake Bay Regulations which may, in future plans, raise these rates. MJBA and its staff, continue to maintain accurate service for its service district, which includes Mount Joy Borough, and portions of Mount Joy, East Donegal and Rapho Townships.

**Water: \$58.16/ first 8,000 gallons used each quarter**

**Sewer: \$70.47/ first 8,000 gallons used each quarter**

- \$7.27 is applied to each 1,000 gallons over the 8,000 gallons for water, but only up to 30,000 gallons, then the rates change.
- \$8.81 is applied to each 1,000 gallons over the 8,000 gallons for sewer, but only up to 30,000 gallons, then the rates change.
  - \* Example of an 8,000 gallon minimum quarterly water and sewer bill: \$128.63
  - \* Example of a 12,000 gallon average quarterly water and sewer bill: \$192.95

Complete rate schedule can be found at [www.mountjoyborough.com](http://www.mountjoyborough.com)

**ALWAYS  
CALL  
BEFORE YOU  
DIG**



Mount Joy Borough Authority protects its utility lines by marking with paint and flags, the locations of the sewer and water lines that lie under the surface of the streets. This usually occurs when a contractor needs to dig in the street or yard to perform some type of work. It is also important for residents to locate such utility lines to help protect yourself from injury and expense. All utility markings are color coded in which for Sewers and Drain Lines are **GREEN** and Potable Water Lines are **BLUE**. Below you can view the rest of the utility color coded markings. For more information, you can visit, [call811.com](http://call811.com).

WHITE	Proposed Excavation
RED	Electric Power Lines, Cables, Conduit & Lighting Cables
PINK	Temporary Survey Markings
YELLOW	Gas, Oil, Steam, Petroleum or Gaseous Materials
BLUE	Potable Water
ORANGE	Communication, Alarm, Signal Lines, Cables, Conduit
GREEN	Sewers and Drain Lines
PURPLE	Reclaimed Water, Irrigation and Slurry Lines



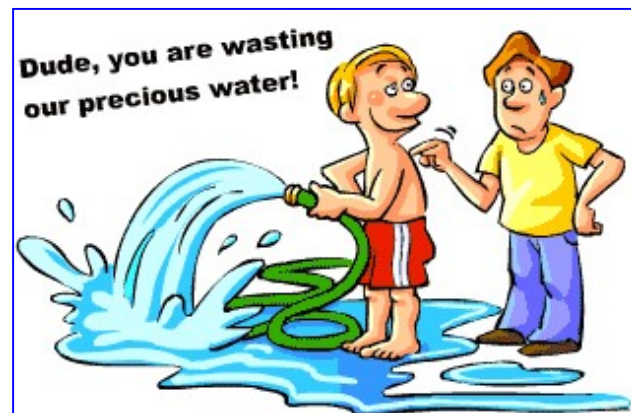
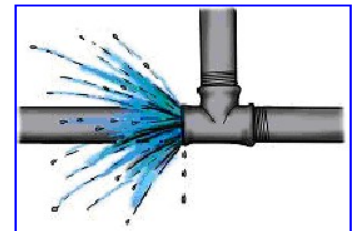
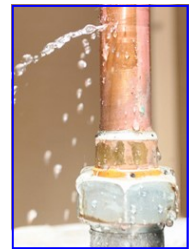
## Things You Can Do To Prevent Water Waste



• Check your toilets for leaks. (Put food coloring in your toilet tank. If, without flushing, the color begins to appear in the bowl, you have a leak that should be repaired.)



- Replace older toilets with efficient water saving toilets.
- Check all faucets, pipes, hoses and couplings for leaks inside and outside of your home. (Leaks outside the house may not seem as bad because they're not as visible. They can be just as wasteful as leaks inside.)
- Rinse your razor in the sink.
- Turn off the water after you wet your toothbrush.
- Use your automatic dishwasher and washing machine only for full loads.
- If you wash dishes by hand, don't leave the water running for rinsing.
- Don't let the faucet run while cleaning vegetables.
- Keep a bottle of drinking water in the refrigerator.
- Water you lawn only when it needs it.
- Deep-soak your lawn. Water during the cool parts of the day. (Early morning is better than dusk because it helps prevent growth of fungus.)
- Plant drought-resistant trees and plants.
- Put a layer of mulch around trees and plants. (Mulch slows evaporation of moisture and discourages weed growth.)
- Don't water the gutter.
- Use a broom, not a hose, to clean driveways and sidewalks.
- Don't run the hose while washing your car.
- Tell your children not to play with the hose and sprinklers.
- Take shorter showers.
- Install water-saving showerheads or flow restrictors.
- Take baths.



# Past, Current & Future Grant Applications

The Authority pursues grant opportunities, when available, to help offset costs for upgrades to the water and/or wastewater system. Over the past 5 years, the Authority was successfully awarded two separate grants through the Commonwealth Financing Authority for project upgrades to the water system. The first grant award, was in the amount of \$700,000.00 and was applied to the Water Booster Station Project that was completed and put into operation in 2015. The second grant, was awarded to the Authority in 2017 and was in the amount of \$268,380.00. The funding from this grant will be applied to the Carmany Road Water Plant Nitrate Rehabilitation Project.

This project will involve the removal of the resin within the three tanks, inspection of the inside of the tank, replacement of internal piping, and lastly the installation of new resin to provide the nitrate process with many years of treatment capability and reliability for the customers. The nitrate project is expected to start in the third quarter of this year and will be completed before this year's end.

In late 2017, the Authority became aware of a grant opportunity through the Department of Community and Economic Development (DCED) under the PA Small Water and Sewer Program. The Authority staff completed the application and submitted the required documents to DCED in February of this year. Included with the application was endorsement letters for the project from Senator Aument, Representative Hickernell and Congressman Smucker.

The grant application submitted for consideration would be utilized to replace and upgrade the pumps, motors and equipment to the two existing wells which are the source of water supply to the Carmany Road Water Treatment Plant. The decisions by DCED on this grant award, are expected to be made in the fall of 2018.

As would be expected with limited grant opportunities, when a program becomes available it generates a highly competitive environment with applicant funding requests usually greatly exceeding the limited pool of funds available.



## The Current State of your Water & Wastewater Systems

The water supply is currently made up of two wells that provide raw water from the same aquifer to the Carmany Road Treatment plant. After the water is pumped to the plant the process of filtration, softening, nitrate reduction and disinfection are completed. The next step consists of approximately 940,000 thousand gallons of potable water being pumped into more than 68 miles of water distribution system and three storage tanks which combined hold over 3 million gallons of water. The water in the distribution system provides service to all 4,950 connections and supplies water for fire protection to more than 495 fire hydrants. In addition, there is a water booster station located in the distribution system to increase pressure in the western part of the community.

The wastewater system consists of more than 67 miles of sewer mains with more than 1,370 manholes. Approximately 20 percent of the daily generated wastewater flows to the wastewater plant by gravity, the remaining 80 percent is conveyed to the plant by 8 different sewage pump stations located throughout the collection system. Once at the plant the approximate 866,000 gallons of wastewater is treated by grit removal, clarifier sedimentation, alum addition, final clarification, methanol addition for nitrogen reduction, filtration and the disinfection process prior to being discharged into the Little Chiques Creek. In 2017, the wastewater treatment plant removed more than 791 dry tons of Class A bio-solids, which some local area farming operations utilize to offset nutrient needs of the soils.



## A Few Things to check...

As we start with the outside cleanup from this past winter, now would be a good time to also check a few items you might not have thought of yet. If you have an outside spigot coming through your wall, verify that cold weather over the winter did not damage the fixture. Connect your garden hose with a spray nozzle to the outside spigot and run some water through the hose, then while leaving the spigot valve on, listen and look for any possible water leaking inside or outside the home. Another item sometimes overlooked would be the vent cap on your sewer line. If you have a vent cap, make sure it is clear of debris around the cap, attached firmly to the pipe and that the pipe does not appear to be broken. Although these two suggestions may seem minimal, finding a possible issue early is always better than finding one after the fact.



# Work Orders

Meters are read four times per year, typically in February, May, August and November. Each quarter when this is completed there are always a few meters that did not read for various reasons. When this happens this will require a work order be generated for each of those particular properties. Once a work order is created, one of the Mount Joy Borough Authority employees will come out to look at the problem and fix it. Each employee will always have proper identification on them so you can verify that they are in fact an employee of Mount Joy Borough Authority. If you ever have any questions about this please do not hesitate to call the office at 653-5938.

## Example of



# work Order

Mount Joy Borough Authority Meter Repair Order	
CUSTOMER INFORMATION	WORK PERFORMED
Name:	
Address:	
City: Mount Joy      State: PA      Zip: 17552	
Account No:	
Meter No:	
MXU No:	
Previous Reading:	
CURRENT PROBLEMS	Return To: Date: Signature:

I, \_\_\_\_\_ represent and acknowledge in allowing and consenting to the entry of Mount Joy Borough Authority employees onto the property identified on this document that I am: (1) the owner of the property or a duly authorized representative of the property owner, (2) I have the authority to grant this access, and (3) I am of legal age to grant this access.

\_\_\_\_\_  
Signature of Person Named Above

\_\_\_\_\_  
Signature Mount Joy Borough Authority Employee

# Recently Completed & Current Projects

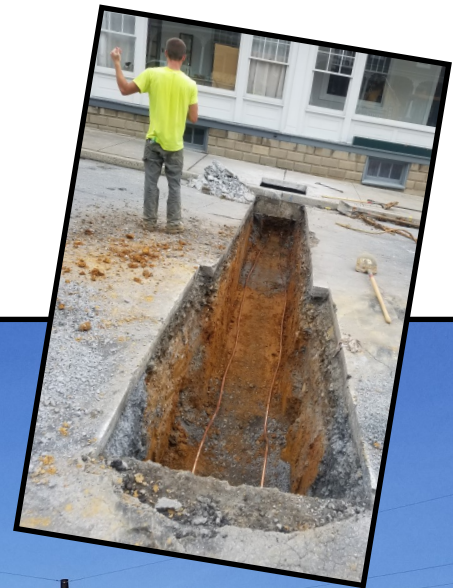
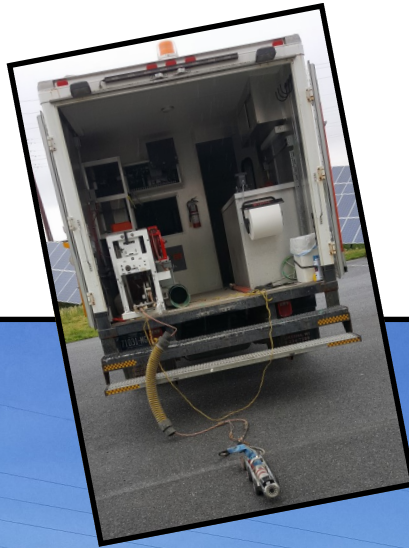
## WATER TREATMENT AND DISTRIBUTION SYSTEMS & SANITARY SEWER AND COLLECTION SYSTEM

### Completed

- New Haven St Water Main Replacement
  - Hydrant Marker Replacement
- 4,200 Feet of Sewer Mains were Flushed
- Television of Sewer Mains in the System

### Current

- Well #3 and South Jacob St Water Plant
- Mixed-Use Water Meter Replacement
  - Sewer Main Flushing & Televising





# 2017 Annual Drinking Water Quality Report

## Mount Joy Borough Authority

### PWSID# 7360091

**Este informe contiene información muy importante sobre su agua de beber. Tradúzcalo ó hable con alguien que lo entienda bien. (This report contains very important information about your drinking water. Translate it, or speak with someone who understands it.)**

#### **WATER SYSTEM INFORMATION:**

This report represents the Mount Joy Borough Authority and shows our water quality and what it means. The Mount Joy Borough Authority's public water system identification number (PWSID) is 7360091. If you have any questions about this report or concerning your water utility, please contact John Leaman, Authority Manager or Joe Ardini, Assistant Authority Manager at the Mount Joy Borough Authority office. The phone number is 653-5938. We want you to be informed about your water supply, if you want to learn more, please attend any of our regularly scheduled meetings. The meetings are held on the first and third Tuesday of each month at 4 PM at the Borough Municipal Center.

#### **SOURCE WATER Information:**

Our water supply is from two (2) production wells that pump to the Carmany Road Water Treatment Plant. The groundwater supplied by the wells comes from what is known as the Donegal Creek Drainage Basin; both wells and the treatment plant are in East Donegal Township. In addition to the Carmany Road Treatment Plant there is one (1) booster pumping station and three (3) water storage tanks. The average daily output from the water treatment plant for 2017 was 941,000 gallons per day.

Water Assessment of our sources was completed in 2004 by the PA Department of Environmental Protection (PADEP). The Assessment has found that our sources are potentially most susceptible to ex. road deicing materials, accidental spills along roadways and railways, leaks in underground storage tanks and agriculture/residential spills. Overall, our sources have moderate risk of significant contamination. Summary reports of the Assessment are available by writing to the Mount Joy Borough Authority at P.O. Box 25 Mount Joy Pa. 17552 and will be available on the PADEP website at [www.dep.state.pa.us](http://www.dep.state.pa.us) (Keyword: "DEP source water"). Complete reports were distributed to municipalities, water supplier, local planning agencies and PADEP offices. Copies of the complete report are available for review at the PADEP South-central Regional Office, Records Management Unit at 717-705-4700.

**Some people may be more vulnerable to contaminants in drinking water than the general population. Immuno-compromised persons such as persons with cancer undergoing chemotherapy, persons who have undergone organ transplants, people with HIV/AIDS or other immune system disorders, some elderly, and infants can be particularly at risk from infections. These people should seek advice about drinking water from their health care providers. EPA/CDC guidelines on appropriate means to lessen the risk of infection by *Cryptosporidium* and other microbial contaminants are available from the Safe Drinking Water Hotline (800-426-4791).**

#### **MONITORING YOUR WATER:**

We routinely monitor for contaminants in your drinking water per federal and state laws. The following tables show the results of our monitoring for the period of January 1 to December 31, 2017. The State allows us to monitor for some contaminants less than once per year because the concentrations of these contaminants do not change frequently. Some of our data is from prior years in accordance with the Safe Drinking Water Act. The date has been noted on the sampling results table.

## DEFINITIONS AND ABBREVIATIONS:

**Action Level (AL)** - The concentration of a contaminant which, if exceeded, triggers treatment or other requirements which a water system must follow.

**Maximum Contaminant Level (MCL)** - The highest level of a contaminant that is allowed in drinking water. MCLs are set as close to the MCLGs as feasible using the best available treatment technology.

**Maximum Contaminant Level Goal (MCLG)** - The level of a contaminant in drinking water below which there is no known or expected risk to health. MCLGs allow for a margin of safety.

**Maximum Residual Disinfectant Level (MRDL)** - The highest level of a disinfectant allowed in drinking water. There is convincing evidence that addition of a disinfectant is necessary for control of microbial contaminants.

**Maximum Residual Disinfectant Level Goal (MRDLG)** - The level of a drinking water disinfectant below which there is no known or expected risk to health. MRDLGs do not reflect the benefits of the use of disinfectants to control microbial contaminants.

**Minimum Reporting Level (MRL)** – Detections below this level do not need to be reported.

**Treatment Technique (TT)** - A required process intended to reduce the level of a contaminant in drinking water.

**Mrem/year** = millirems per year (a measure of radiation absorbed by the body)

**pCi/L** = picocuries per liter (a measure of radioactivity)

**ppb** = parts per billion, or micrograms per liter (µg/L)

**ppm** = parts per million, or milligrams per liter (mg/L)

**ppq** = parts per quadrillion, or picograms per liter

**ppt** = parts per trillion, or nanograms per liter

## DETECTED SAMPLE RESULTS:

Inorganic Contaminants	MCL In CCR Units	MCLG	Highest Level Detected	Range of Detections	Units	Violation Y/N	Sources of Contamination
Barium (2015)	2	2	0.015	- - -	ppm	N	Erosion of natural deposits.
Nitrate	10	10	6.1	3.8 – 6.1	ppm	N	Soil runoff

## Lead and Copper Rule

Contaminant	Action Level (AL)	MCLG	90 <sup>th</sup> Percentile Value	Units	# of Sites Above AL of Total Sites	Violation Of TT Y/N	Sources of Contamination
Lead 2016	15	0	4.27	ppb	0	N	Corrosion of household plumbing
Copper 2016	1.3	1.3	0.19	ppm	0	N	Corrosion of household plumbing

If present, elevated levels of lead can cause serious health problems, especially for pregnant women and young children. Lead in drinking water is primarily from materials and components associated with service lines and home plumbing. Mount Joy Borough Authority is responsible for providing high quality drinking water, but cannot control the variety of materials used in plumbing components. When your water has been sitting for several hours, you can minimize the potential for lead exposure by flushing your tap for 30 seconds to 2 minutes before using water for drinking or cooking. If you are concerned about lead in your drinking water, testing methods and steps you can take to minimize exposure is available from the Safe Drinking Water Hotline or at <http://www.epa.gov/safewater/lead>.



## **Disinfection Byproducts, Byproduct Precursors, and Disinfectant Residuals**

Contaminants	MCL In CCR Units	MCLG	Highest Level Detected	Range of Detections	Units	Violation Y/N	Sources of Contamination
Haloacetic Acids (ppb)	60	n/a	7.5	0.0 – 7.5	ppb	N	By-product of drinking water disinfection
TTHMs [Total trihalomethanes] (ppb)	80	n/a	29.5	4.9 – 29.5	ppb	N	By-product of drinking water chlorination
Chlorine (in the distribution)	mrcl=4	mrcl=4	.99	.66 – .99	ppm	N	Water additive used to control microbes

### **Entry Point Disinfectant Residual**

Contaminant	Minimum Disinfectant Residual	Lowest Level Detected	Range of Detections	Units	Date of Lowest Detection	Violation Y/N	Sources of Contamination
Chlorine (at the water plant)	0.2	.86	.88 – 1.42	ppm	06/08/2017	N	Water additive used to control microbes.

## **Turbidity**

Contaminant	MCL	MCLG	Level Found	Sample Date	Range Found	Violation Of TT Y/N	Source of Contamination
Turbidity	TT=1 NTU for a single measurement	0	.09 NTU	1/10/2017	.01 - .09 NTU	N	Soil runoff
	TT= at least 95% of monthly samples ≤0.3 NTU		100%	1/1/2017 - 12/31/2017	n/a	N	

*Turbidity is a measure of the cloudiness of the water (in Nephelometric Turbidity Units). We monitor it because it is a good indicator of the effectiveness of our filtration system.*

## **Total Organic Carbon**

<b><u>Total Organic Carbon (TOC)</u></b>					
Contaminant	Range of % Removal Required	Range of percent removal achieved	Number of quarters out of compliance	Violation Y/N	Sources of Contamination
TOC	NA *	38% to 100%	0	N	Naturally present in the environment.

*\*Our raw water TOC levels are low enough that no removal is required, but our treatment system removes even those low levels of TOC.*

## **HEALTH EFFECTS:**

No MCL's or treatment techniques were exceeded.

## **OTHER VIOLATIONS:**

The Authority was required to conduct quarterly testing for PCB's as part of the Synthetic Organic Contaminant testing, the testing was completed by the Authority. The 4<sup>th</sup> quarter test results were submitted late to PA DEP due to a lab error. The 4<sup>th</sup> quarter required PCB testing along with the 1<sup>st</sup>, 2<sup>nd</sup> and 3<sup>rd</sup> quarterly PCB testing all were negative with No Detections reported by the lab.

## **EDUCATIONAL INFORMATION:**

The sources of drinking water (both tap water and bottled water) include rivers, lakes, streams, ponds, reservoirs, springs and wells. As water travels over the surface of the land or through the ground, it dissolves naturally-occurring minerals and, in some cases, radioactive material, and can pick up substances resulting from the presence of animals or from human activity. Contaminants that may be present in source water include:

- Nitrate in drinking water at levels above 10 ppm is a health risk for infants of less than six months of age. High nitrate levels in drinking water can cause blue baby syndrome. Nitrate levels may rise quickly for short time because of rainfall or agricultural activity. If you are caring for an infant, you should ask for advice from your health care provider.
- Microbial contaminants, such as viruses and bacteria, which may come from sewage treatment plants, septic systems, agricultural livestock operations, and wildlife.
- Inorganic contaminants, such as salts and metals, which can be naturally-occurring or result from urban storm water run-off, industrial or domestic wastewater discharges, oil and gas production, mining, or farming.
- Pesticides and herbicides, which may come from a variety of sources such as agriculture, urban storm water runoff, and residential uses.
- Organic chemical contaminants, including synthetic and volatile organic chemicals, which are by-products of industrial processes and petroleum production, and can also come from gas stations, urban storm water runoff, and septic systems.
- Radioactive contaminants, which can be naturally-occurring or be the result of oil and gas production and mining activities.

In order to ensure that tap water is safe to drink, EPA and DEP prescribes regulations which limit the amount of certain contaminants in water provided by public water systems. FDA and DEP regulations establish limits for contaminants in bottled water which must provide the same protection for public health.

Drinking water, including bottled water, may reasonably be expected to contain at least small amounts of some contaminants. The presence of contaminants does not necessarily indicate that water poses a health risk. More information about contaminants and potential health effects can be obtained by calling the Environmental Protection Agency's Safe Drinking Water Hotline (800-426-4791).

## **OTHER INFORMATION:**

Whether your tap water comes from surface or ground water, all drinking water sources are vulnerable to a variety of contaminants from a variety of activities. Preventing pollution is critical to protecting drinking water from contamination and reducing the need for costly treatment. Community involvement and individual action is the key to providing a safe supply of drinking water. Local Watershed Organizations greatly contribute to helping to clean up and preserve the water quality in our area streams.





REVENUES			COLLECTION EXPENSES		
Account #	Description		Account #	Description	
08.364.601	Residential Sewer Service	\$ 2,077,000.00	08.428.710	Wages	\$ 120,980.20
08.364.602	Commercial Sewer Service	\$ 246,000.00	08.428.712	Supplies	\$ 3,000.00
08.364.603	Industrial Sewer Service	\$ 117,000.00	08.428.714	Utilities	\$ 37,000.00
08.364.604	Public/Other Sewer Service	\$ 115,000.00	08.428.715	Equipment Maintenance	\$ 5,500.00
08.364.605	Sewer Tapping/Connection Fees	\$ 50,000.00	08.428.716	Repairs/Maintenance	\$ 55,000.00
08.364.606	Water Meter Sales	\$ 20,000.00	08.428.717	Vehicle Expense	\$ 11,000.00
08.364.607	Quarterly Surcharge Fees	\$ 25,000.00	08.428.718	General Expense	\$ 1,000.00
08.364.608	Misc Revenue/Reimbursements	\$ 5,000.00	08.428.719	Equipment Purchase/Tools	\$ 6,000.00
08.364.609	Final Reading Fees	\$ 3,000.00	08.428.720	Service Connections	\$ 1,500.00
08.364.610	Interest Income	\$ 1,000.00	08.428.754	Meters	\$ 40,000.00
08.364.611	Lien Payoffs	\$ 300.00		<b>SUBTOTAL</b>	<b>\$ 280,980.20</b>
08.364.612	Insurance Rebate	\$ 4,000.00	<b>TREATMENT &amp; DISPOSAL EXPENSES</b>		
08.364.613	Energy Reimbursements	\$ 70,000.00			
	<b>TOTAL REVENUES</b>	<b>\$ 2,733,300.00</b>			
EXPENSES					
ADMIN.			Account #	Description	
08.400.782	Authority Manager Wages	\$ 42,384.03	08.429.730	Wages	\$ 249,152.14
08.400.783	Operations Manager Wages	\$ 39,101.28	08.429.732	Bio-solids Hauling	\$ 30,600.00
08.400.784	Business Manager Wages	\$ 26,801.77	08.429.733	Testing	\$ 15,000.00
08.400.785	Administrative Assistant	\$ 22,290.06	08.429.734	Chemicals	\$ 255,000.00
08.400.790	Authority Board Members	\$ 3,750.00	08.429.735	Supplies/Lab Supplies	\$ 15,000.00
08.400.791	Pension	\$ 43,573.79	08.429.736	Utilities	\$ 170,000.00
08.400.792	Water/Sewer Billing	\$ 11,000.00	08.429.737	Equipment Purchase/Tools	\$ 3,000.00
08.400.793	Office Supplies	\$ 2,000.00	08.429.738	Plant Repairs/Maintenance	\$ 82,500.00
08.400.794	Communication Expense	\$ 3,700.00	08.429.739	Equipment Maintenance	\$ 5,500.00
08.400.795	Engineering	\$ 20,000.00	08.429.740	General Expense	\$ 8,000.00
08.400.796	Trustee	\$ 3,000.00	08.429.742	Vehicle Expense	\$ 5,000.00
08.400.797	Legal Expense	\$ 25,000.00		<b>SUBTOTAL</b>	<b>\$ 838,752.14</b>
08.400.798	Liability/Worker's Comp Ins.	\$ 46,000.00		<b>TOTAL EXPENSES</b>	<b>\$ 1,698,519.46</b>
08.400.799	Health Insurance	\$ 166,486.19	DEBT SERVICE		
08.400.800	Building Rental/Reimbursement	\$ 35,000.00	FUND BALANCE FOR BRIF		
08.400.801	Auditor Expense	\$ 25,000.00	<b>TOTAL BUDGET</b>		
08.400.802	Uniforms	\$ 3,000.00			<b>\$ 2,733,300.00</b>
08.400.804	Payroll Taxes/Fees	\$ 45,000.00			
08.400.806	General Expense	\$ 3,000.00			
08.400.807	Dues/Memberships	\$ 5,000.00			
08.400.808	Training	\$ 3,500.00			
08.400.809	Bank Charges	\$ 200.00			
08.400.810	Advertising/Printing	\$ 4,000.00			
	<b>SUBTOTAL</b>	<b>\$ 578,787.12</b>			

Revenues collected in excess of expenses paid and certain accruals are used for specific purpose of capital improvements to the Authority's sewer system and the payment of principal and interest on the Authority's outstanding debt.

2018-2019  
Mount Joy Borough  
Authority  
Wastewater System Budget

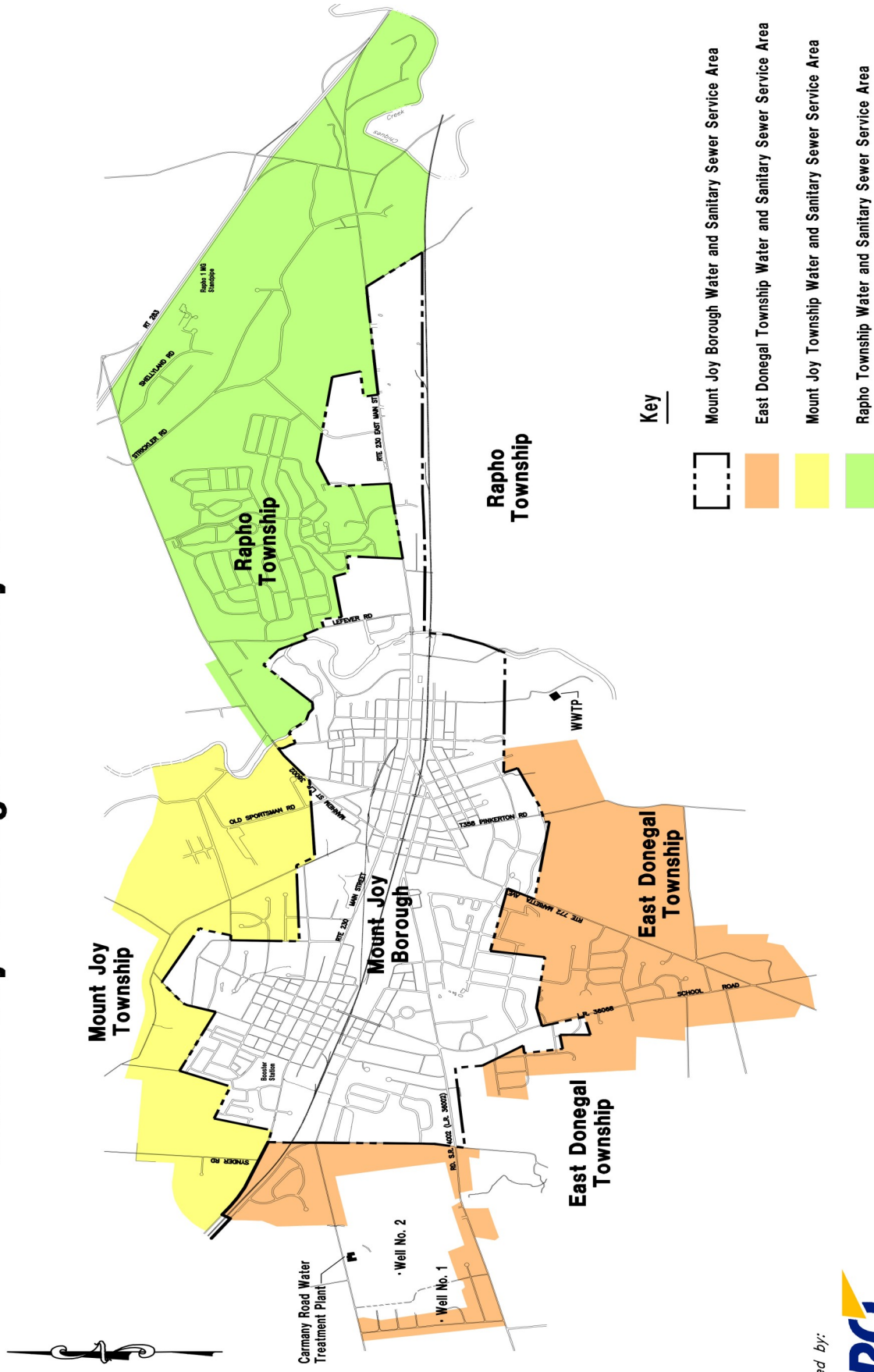
REVENUES			TREATMENT EXPENSES		
Account #	Description		Account #	Description	
06.378.601	Residential Water Service	\$ 1,710,000.00	06.448.702	Wages	\$ 191,805.50
06.378.602	Commercial Water Service	\$ 229,000.00	06.448.703	Supplies & Lab Supplies	\$ 4,000.00
06.378.603	Industrial Water Service	\$ 321,000.00	06.448.704	Testing	\$ 19,000.00
06.378.604	Public / Other Water Service	\$ 102,000.00	06.448.705	Repairs / Maintenance	\$ 85,000.00
06.378.605	Water Tapping /Connection Fees	\$ -	06.448.706	Chemicals	\$ 140,000.00
06.378.606	Water Meter Sales	\$ 20,000.00	06.448.707	General Expense	\$ 500.00
06.378.607	Lease / Rent Agreements	\$ 74,640.00	06.448.708	Vehicle Expense	\$ 7,000.00
06.378.608	Misc Revenue / Reimbursements	\$ 5,000.00	06.448.709	Utilities	\$ 100,000.00
06.378.609	Final Reading Fees	\$ 3,000.00	06.448.710	Equipment Purchases/Tools	\$ 5,000.00
06.378.610	Interest Income	\$ 1,000.00	06.448.711	Equipment Maintenance	\$ 2,000.00
06.378.611	Lien Payoffs	\$ 300.00		<b>SUBTOTAL</b>	<b>\$ 554,305.50</b>
06.378.612	Insurance Rebates	\$ 4,000.00			
	<b>TOTAL REVENUES</b>	<b>\$ 2,469,940.00</b>	TRANSMISSION DISTRIBUTION EXPENSES		
EXPENSES			Account #	Description	
ADMIN.			06.449.752	Wages	\$ 120,980.20
06.400.782	Authority Manager Wages	\$ 42,384.03	06.449.753	Supplies	\$ 3,000.00
06.400.783	Operations Manager Wages	\$ 39,101.28	06.449.754	Meters	\$ 40,000.00
06.400.784	Business Manager Wages	\$ 26,801.77	06.449.755	Fire Hydrant Expenses	\$ 12,500.00
06.400.785	Administrative Assistant	\$ 22,290.06	06.449.756	Repairs / Maintenance	\$ 80,000.00
06.400.790	Authority Board Members	\$ 3,750.00	06.449.757	Equipment Maintenance	\$ 5,500.00
06.400.791	Pension	\$ 43,573.79	06.449.758	Equipment Purchases/Tools	\$ 6,000.00
06.400.792	Water/Sewer Billing	\$ 11,000.00	06.449.759	Service Connections	\$ 1,500.00
06.400.793	Office Supplies	\$ 2,000.00	06.449.760	Vehicle Expense	\$ 12,000.00
06.400.794	Communication Expense	\$ 3,700.00	06.449.761	General Expense	\$ 1,000.00
06.400.795	Engineering	\$ 25,000.00	06.449.762	Utilities	\$ 30,000.00
06.400.796	Trustee	\$ 3,000.00		<b>SUBTOTAL</b>	<b>\$ 312,480.20</b>
06.400.797	Legal Expense	\$ 25,000.00		<b>TOTAL EXPENSES</b>	<b>\$ 1,452,072.82</b>
06.400.798	Liability/Worker's Comp Ins.	\$ 46,000.00			
06.400.799	Health Insurance	\$ 166,486.19		DEBT SERVICE	\$ 772,983.50
06.400.800	Building Rental /Reimbursement	\$ 35,000.00		FUND BALANCE FOR BRIF	\$ 244,883.68
06.400.801	Auditor Expense	\$ 25,000.00		<b>TOTAL BUDGET</b>	<b>\$ 2,469,940.00</b>
06.400.802	Uniforms	\$ 3,000.00			
06.400.804	Payroll Taxes / Fees	\$ 45,000.00			
06.400.806	General Expense	\$ 3,000.00			
06.400.807	Dues / Memberships	\$ 6,500.00			
06.400.808	Training	\$ 3,500.00			
06.400.809	Bank Charges	\$ 200.00			
06.400.810	Advertising / Printing	\$ 4,000.00			
	<b>SUBTOTAL</b>	<b>\$ 585,287.12</b>			

Revenues collected in excess of expenses paid and certain accruals are used for specific purpose of capital improvements to the Authority's water system and the payment of principal and interest on the Authority's outstanding debt.

2018-2019  
Mount Joy Borough  
Authority  
Water System Budget



# Mount Joy Borough Authority Service Area



**MOUNT JOY BOROUGH AUTHORITY**  
**PO Box 25**  
**Mount Joy, PA 17552**

PRSRT STD  
ECRWSS  
U.S. POSTAGE  
PAID  
EDDM RETAIL

**LOCAL  
POSTAL CUSTOMER**

## MOUNT JOY BOROUGH AUTHORITY

21 East Main Street, P.O. Box 25  
Mount Joy, PA 17552  
TEL: (717) 653-5938  
FAX: (717) 653-6680  
E-mail: [authority@mountjoypa.org](mailto:authority@mountjoypa.org)  
Web: [www.mountjoyborough.com](http://www.mountjoyborough.com)

### CONSULTANTS

Arro Consulting, Inc., *Engineer*  
Barley, Snyder, Senft & Cohen, *Solicitor*  
Trout, Ebersole & Groff, *Auditors*  
Fulton Bank, *Trustee*  
Northwest Bank, *Depository*

# Hydrant Flushing

The Mount Joy Borough Authority will begin a Fire Hydrant Flushing Program in early May 2018 through fall 2018. We will be flushing daily from 8 AM—3 PM, some customers may experience a brief change in water clarity or pressure during this time.



© 2018 Mount Joy Borough Authority