

# Mount Joy Borough Authority

## 2019 Annual Report





# Mount Joy Borough Authority Table of Contents

Board of Directors & Officers.....	Page 2
A Message from the Authority Board Chairman.....	Page 3
Borough Authority Staff.....	Pages 4-5
Replacing Your Curb or Sidewalk & SwiftReach.....	Page 6
Borough Authority Retirement & Years of Service.....	Page 7
Current Projects.....	Page 8
Completed Projects.....	Page 9
Message from the Authority Administrator.....	Pages 10-11
Regulations from DEP Regarding Water Main Breaks.....	Page 11
New Water/Sewer Rates & PA One Calls.....	Page 12
Things You Can Do To Prevent Water Waste.....	Page 13
Past, Current & Future Grant Applications.....	Page 14
A Few Things to Check & Work Orders.....	Page 15
Hydrant Flushing.....	Page 16
2018 Annual Drinking Water Quality Report.....	Pages 17-20
Wastewater System Budget.....	Page 21
Water System Budget.....	Page 22
Borough Authority Service Area Map.....	Page 23
The Current State of your Water & Wastewater Systems.....	Page 24

## Board of Directors & Officers

Back Left to Right:  
Christopher Metzler, Steven  
Weems, Richard Hamm

Front Left to Right:  
John D. Rebman, Larry Derr



The Board of Directors & Officers meet on the first and third Tuesday of each month at 4 PM.

# A Message From The Authority Board Chairman

As you will see, the 2019 Annual Report will again highlight both a busy and exciting year for Mount Joy Borough Authority (MJBA).

The Authority takes pride in announcing that construction on the South Jacob Street Water Plant is nearing completion and will soon be in operation to supply potable water to our customers. Completion of this project will provide a secondary source for water to be withdrawn from a separate aquifer, along with the ability for treatment at the new facility in the event of a catastrophic event. An in-depth description on the new facility can be found within this report.

The Carmany Road Nitrate Refurbishment Project is currently under construction and work will be completed this year. As stated in the 2018 CCR report, the Authority was able to apply for and receive a PA Small Water and Sewer Grant, through the PA Commonwealth Financing Authority, which helped offset some of the capital costs. The Authority has applied for grants through various local and state agencies in the past with favorable results, and will apply for future grants when they become available.

Both water and wastewater facilities are staffed with highly trained operators that have acquired licenses through PA Department of Environmental Protection. As of this date, we have a total of ten employees that have a license in water, wastewater or both and encourage its remaining employees to accomplish this status. The Authority is fortunate to have dedicated, proactive and mindful employees who care about the services they provide.

The Authority continues to undertake projects that will improve the overall system through water or sewer line replacements, facility upgrades or future proposed regulatory requirements, all intended to benefit our customers. MJBA's Board of Directors and Officers will continue its efforts in providing a service that meets all state and federal requirements and steer the Authority in a direction that is beneficial to its purpose and customers.

I encourage you as a customer to read through the articles and reports contained within this Consumer Confidence Report.





# Mount Joy Borough Authority Staff

## Administration

(Pictured from left to right)

(Back)

- Scott Kapcsos, Operations Manager (W-A1 ) Water License—8 yrs
- Joe Ardini, Authority Manager (S-A1/W-A1) Water & Sewer License—22 yrs

(Front)

- Lindsey Edgell, Admin. Assistant—17 yrs
- Angie Fenicle, Business Manager—20 yrs



## Construction Department



(Pictured from left to right)

- Jason Bowers, Operator/Construction Laborer (W-A1) Water License—20 yrs
- Jim Zink, Operator/Construction Laborer (W-A2) Water License—40 yrs
  - Blaine Youtz, Construction Laborer, Sewer License in Process—1 yr
  - Ryan Storm, Construction Laborer, Water License in Process—1 yr



# Mount Joy Borough Authority Staff

## Water Department

(Pictured from left to right)

- Shawn Younger, Operator  
Water License in Process—1 yr
- Scott Kling, Operator  
(W-A1) Water License—12 yrs
- Zachary Dennis, Chief Operator  
(WA-1/SA-1) Water & Sewer License—5 yrs



## Wastewater Department



(Pictured from left to right)

- Gary Karichner, Operator (S-A1) Sewer License—12 yrs
- David Piatt, Operator (W-A1/S-A1) Water & Sewer License—6 yrs
- Dennis Hardman, Chief Operator (S-A1) Sewer License—20 yrs
  - Wayne Kauffman: Part-Time Maintenance—3 yrs
- Ralph Eckels, Operator (S-A1/W-A1) Water & Sewer License—21 yrs



## Are You Replacing Your Curb and/or Sidewalk?

While your sidewalk contractor is removing your old sidewalk, it is very wise to dig a little further to check the condition of your water service line. If it is a galvanized line, you should consider replacing it with new copper line before spending the money on your new sidewalk knowing an old water line is located under it.

Many times shortly after pouring the new concrete sidewalk, the disturbance from the construction causes the old line to leak resulting in the new sidewalk having to be dug up. If you have your contractor carefully expose the water line, Authority staff will be happy to inspect it free of charge.

Also, your contractor should be sure that the curb valve box is perfectly straight and over the valve. In order not to pour concrete against the curb box lid, wrapping duct tape around the lid works well.

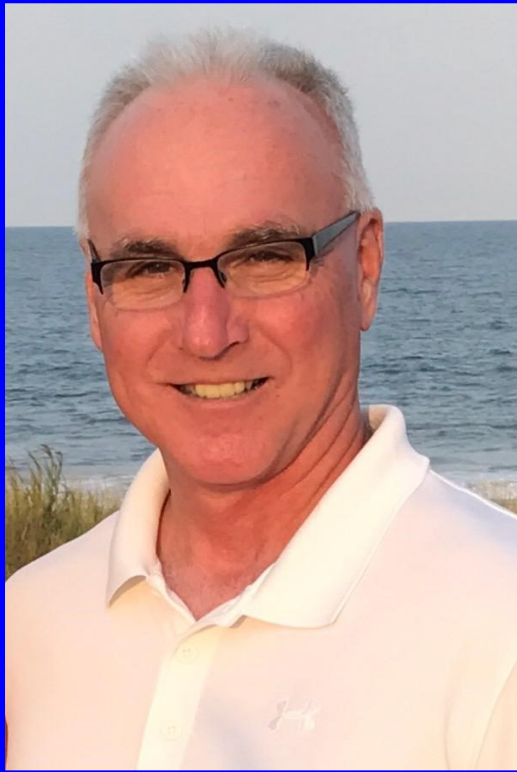
If you are planning any curb and sidewalk replacement and are unsure of your situation relative to your water line, feel free to contact the Authority Office for assistance.



Mount Joy Borough Authority has contracted with SWIFT Reach Network to have an immediate response mechanism to alert you of any important news relative to your water/sewer service. Currently we have basic information for most property owners. You are able to access this file to add/change items, such as cell phone or other electronic devices such as e-mail. Please visit [www.mountjoyborough.com](http://www.mountjoyborough.com) and click on the link to the left that says "Police", then follow to the link that says "Swift 911 Emergency" to submit your information electronically. This system will also be available for use by the Borough and Police Department to alert you of emergencies. If you do not have internet access, please call the Authority Office at 717-653-5938 so we can update your information for you.



# Authority Recognizes the Retirement of John Leaman



The Authority has been fortunate over the years to have dedicated and devoted employees, we would like to recognize John Leaman for his service to the Authority and Community. John began his employment with the Authority in 1986, hired as an operator at the South Jacob Street Wastewater Plant, where he excelled at learning the operations of the facility. When a position at the Carmany Road Water Plant became available he was moved to the facility as an operator, it did not take long for him to learn the processes and shortly became the Chief Operator. John's progression through the company continued over the years becoming Assistant Superintendent and then in January of 2012 he was promoted to Authority Manager.

As you see the progression of John's promotions over the years with the Authority, he continually strived to improve upon himself and channel the Authority in a positive direction. Most evident is the way John took new employees and trained them in proper operation, fundamentals, customer care and problem solving.

The value of employees is sometimes overlooked or underappreciated, especially when you have employees that remain with a company through the worst and best of times. John has given a full 100% to the Authority over his 33 years of service and a simple "Thank You" can never fully encapsulate the appreciation deserved. We wish John the best as one chapter closes and another begins.

## Thanks for 25 Years of Service

The Mount Joy Borough Authority staff and board would like to give a big thanks to Barry Geltmacher for all of his years of service. Barry was hired by the Mount Joy Borough Authority in January of 1993 as a Water Plant Operator, after a few short years in June of 1998 Barry was promoted to Chief Plant Operator, where he served the Mount Joy Borough Authority until June of 2018.

Thank you Barry for 25 years of dedicated service to Mount Joy Borough Authority and its residents.





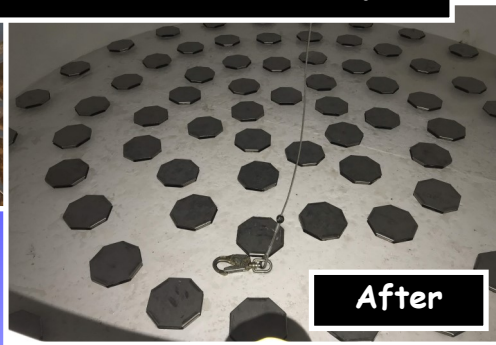
# Current Projects

**Carmany Rd Nitrate Vessel Rehabilitation Project**

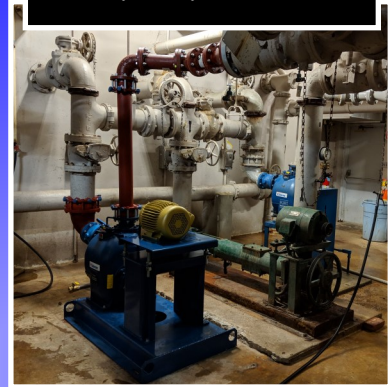
**Before**



**After**



**Waste Water Treatment Plant Pump Replacement**



**Well #3**



**Pinkerton Rd Water Main Replacement**



**South Jacob St Water Plant**





# Recently Completed Projects

Complete System Hydrant Flushing



Mixed-Use Water Meter Replacement Project



Precision Leak Detection of Entire Water System



Flushing and Televising of Sewer Mains



Chestnut Street Valve Replacement & Hydrant Installation



Before



After

# A Message From The Authority

## Administrator Joseph Ardini

The Mount Joy Borough Authority (Authority) is an "operating authority" providing water and wastewater services to over 5,030 commercial, industrial and residential accounts. The population served is approximately 14,873 people from Mount Joy Borough and portions of Mount Joy, East Donegal and Rapho Townships.

The Authority provides two separate services to our customers, one is to provide a safe potable supply of water to meet system demand and the second service is to provide effective treatment of wastewater to comply with state and federal regulations. In addition to the water and wastewater treatment plants, the Authority operates, maintains and upgrades the water distribution system and wastewater collection system. The Authority's service area map is shown on the inside of the back cover.

Over the last year, the Authority completed upgrades at the Wastewater Treatment Plant, which consisted of the replacement of a primary sludge pump, and replacement of an effluent water pump, along with other maintenance items at the facility. In the collection system, stand-by pumps were purchased for two of the existing pump stations. Future projects for 2019-2020 will consist of replacement to the clarifier drive units at the facility and evaluation of thickened sludge pump replacement.

During 2018, the Authority completed a water main replacement on South Jacob Street, which consisted of 300 feet of new ductile water main. Authority staff also relocated water service lines on Lumber Street from the existing 4-inch to the existing 12-inch, in preparation of abandoning the existing 4-inch water main. Project upgrades like these provide benefits of replacing aging cast iron water mains, water quality enhancements and improving fire protection. When applicable, Authority employees are utilized on projects like this to minimize costs.

In the Annual Report last year, it was reported that activity was moving forward with construction of a new water treatment plant. Construction on the facility began in August of 2017, continued through 2018 and is anticipated being operational in the spring of 2019. The new water plant has treatment processes which include membrane filtration, nitrate reduction, softening and disinfection. The new facility offers benefits which include increased pumping capacity, provide flexibility to complete improvements to the existing Carmany Road Plant and have a new well which is in a separate aquifer from Wells 1 & 2.

(Continued Page 11)





Another project that was undertaken in 2018 was the Nitrate Resin Replacement Project, this project was awarded to M2 Construction in late fall of 2018 and is anticipated to be completed in 2019. Prior to the project, the Authority applied for a grant through the Commonwealth of Pennsylvania, Commonwealth Financing Agency and was awarded partial funding for the project.

A new budget was adopted for the Authority's fiscal year which included an increase to the water and sewer rates, the Authority will evaluate the current and future rate structure on a yearly basis. Replacement of underground infrastructure continues as a priority and the rate structure provides the means and way of continuing this path.

The Authority board and staff never want to lose sight of what is most important, that is, you, our customers. Our goal is to provide a system that will permit uninterrupted service to you and future generations. This service can be accomplished even in an environment that is heavily regulated by State and Federal Agencies. We encourage you to contact us at any time with questions or suggestions. I can be reached at the Mount Joy Municipal Center by phone at 717-653-5938 or by email at [joe@mountjoypa.org](mailto:joe@mountjoypa.org).

## Regulations from DEP Regarding Water Main Breaks



There is very specific protocol required by DEP (Department of Environmental Protection) when a water main break occurs. Depending on how and what type of break happens, precautionary boil notices will be put out. When you see the boil notice, there isn't necessarily a problem; we are just following DEP protocol. Please feel free to contact the Mount Joy Borough Authority at 717-653-5938 if you see a boil notice and have any questions.

# New Water & Sewer Rates

Mount Joy Borough Authority strives to keep water and sewer rates as low as it will allow. MJBA also continues to stay in compliance with the Chesapeake Bay Regulations which may, in future plans, raise these rates. MJBA and its staff, continue to maintain accurate service for its service district, which includes Mount Joy Borough, and portions of Mount Joy, East Donegal and Rapho Townships.

**Water: \$62.00/ first 8,000 gallons used each quarter**

**Sewer: \$73.36/ first 8,000 gallons used each quarter**

- \$7.75 is applied to each 1,000 gallons over the 8,000 gallons for water, but only up to 30,000 gallons, then the rates change.
- \$9.17 is applied to each 1,000 gallons over the 8,000 gallons for sewer, but only up to 30,000 gallons, then the rates change.
- \* Example of an 8,000 gallon minimum quarterly water and sewer bill: \$135.36
- \* Example of a 12,000 gallon average quarterly water and sewer bill: \$203.04

Complete rate schedule can be found at [www.mountjoyborough.com](http://www.mountjoyborough.com)

**Now Available: Pay your water/sewer bill  
online at [www.mountjoyborough.com](http://www.mountjoyborough.com)**

**ALWAYS  
CALL  
BEFORE YOU  
DIG**



Mount Joy Borough Authority protects its utility lines by marking with paint and flags, the locations of the sewer and water lines that lie under the surface of the streets. This usually occurs when a contractor needs to dig in the street or yard to perform some type of work. It is also important for residents to locate such utility lines to help protect yourself from injury and expense. All utility markings are color coded in which for Sewers and Drain Lines are **GREEN** and Potable Water Lines are **BLUE**. Below you can view the rest of the utility color coded markings. For more information, you can visit, [call811.com](http://call811.com).

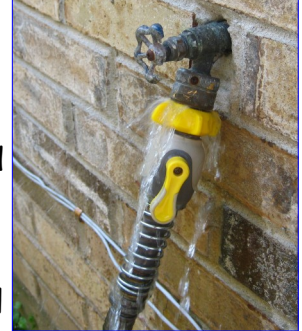
WHITE	Proposed Excavation
RED	Electric Power Lines, Cables, Conduit & Lighting Cables
PINK	Temporary Survey Markings
YELLOW	Gas, Oil, Steam, Petroleum or Gaseous Materials
BLUE	Potable Water
ORANGE	Communication, Alarm, Signal Lines, Cables, Conduit
GREEN	Sewers and Drain Lines
PURPLE	Reclaimed Water, Irrigation and Slurry Lines



# Things You Can Do To Prevent Water Waste



• Check your toilets for leaks. (Put food coloring in your toilet tank. If, without flushing, the color begins to appear in the bowl, you have a leak that should be repaired.)



- Replace older toilets with efficient water saving toilets.
- Check all faucets, pipes, hoses and couplings for leaks inside and outside of your home.
- Rinse your razor in the sink.
- Turn off the water after you wet your toothbrush.
- Use your automatic dishwasher and washing machine only for full loads.
- If you wash dishes by hand, don't let the water running for rinsing.
- Don't let the faucet run while cleaning vegetables.
- Keep a bottle of drinking water in the refrigerator.
- Water your lawn only when it needs it.
- Deep-soak your lawn. Water during the cool parts of the day. (Early morning is better than dusk because it helps prevent growth of fungus.)
- Plant drought-resistant trees and plants.
- Put a layer of mulch around trees and plants. (Mulch slows evaporation of moisture and discourages weed growth.)
- Don't water the gutter.
- Use a broom, not a hose, to clean driveways and sidewalks.
- Don't run the hose while washing your car.
- Tell your children not to play with the hose and sprinklers.
- Take shorter showers.
- Install water-saving showerheads or flow restrictors.
- Take baths.





# Past, Current & Future Grant Applications

In late 2017, the Authority became aware of a grant opportunity through the Department of Community and Economic Development (DCED), under the PA Small Water and Sewer Program. Authority staff completed the application and submitted the required documents to DCED in February of 2018. Included with the application were endorsement letters for the project from Senator Aument, Representative Hickernell and Congressman Smucker. Unfortunately, we did not receive a favorable outcome, as could be expected with limited grant opportunities, when a grant program becomes available it generates a highly competitive environment, with applicant funding requests greatly exceeding the limited funds available.

The Nitrate Rehabilitation Project at the Carmany Road Water Treatment Plant was put out to bid in July of 2018 and the contract was awarded in August of 2018, with a notice to proceed in September of 2018. This project is being partially funded by a grant that was applied for by the Authority and favorably accepted by the Department of Community and Economic Development (DCED), PA Small Water and Sewer Program in the amount of \$268,000. This project consists of the removal of the resin within the three tanks, inspection of the inside of the tank, blasting and recoating the interior of the tanks, replacement of internal piping, and lastly the installation of new resin, to provide the nitrate process with many years of treatment capability and reliability for the customers. Due to the possibility of a delay in availability of some key materials needed to complete this project, the Authority requested that all materials be on-site prior to the rehabilitation process of the first tank starting. Progress is currently ongoing with an anticipated completion in 2019.

In the future, the Authority will continue to pursue all grant opportunities when they become available which fall within the grant criteria and are applicable to our current and future project needs.





# A Few Things to Check...

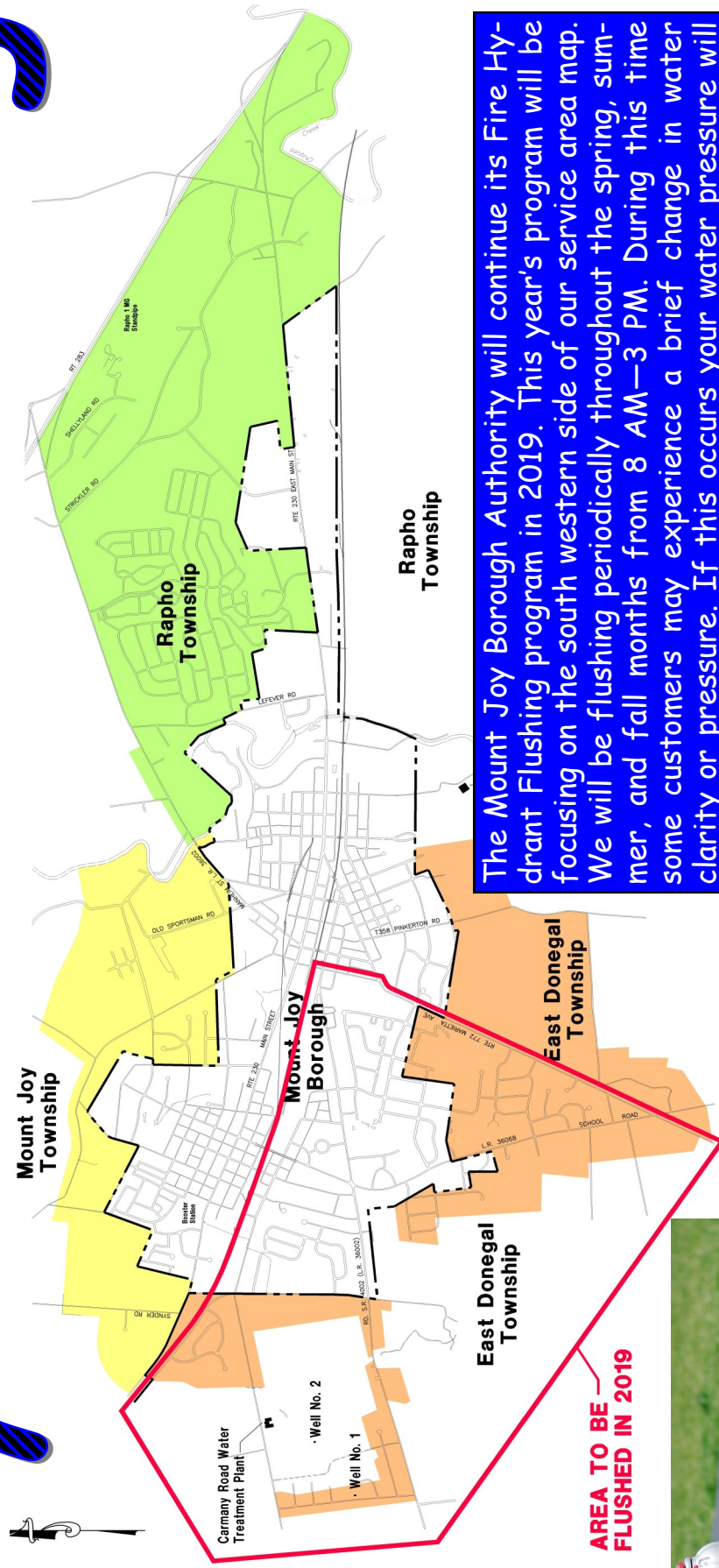
As we start with the outside cleanup from this past winter, now would be a good time to also check a few items you might not have thought of yet. If you have an outside spigot coming through your wall, verify that cold weather over the winter did not damage the fixture. Connect your garden hose with a spray nozzle to the outside spigot and run some water through the hose, then while leaving the spigot valve on, listen and look for any possible water leaking inside or outside the home. Another item sometimes overlooked would be the vent cap on your sewer line. If you have a vent cap, make sure it is clear of debris around the cap, attached firmly to the pipe and that the pipe does not appear to be broken. Although these two suggestions may seem minimal, finding a possible issue early is always better than finding one after the fact.



## Work Orders

Meters are read four times per year, typically in February, May, August and November. Each quarter when this is completed there are always a few meters that did not read for various reasons. When this happens it will require a work order be generated for each of those particular properties. Once a work order is created, one of the Mount Joy Borough Authority employees will come out to look at the problem and fix it. Each employee will always have proper identification on them so you can verify that they are in fact an employee of Mount Joy Borough Authority. If you ever have any questions about this please do not hesitate to call the office at (717) 653-5938.

# Hydrant Flushing



The Mount Joy Borough Authority will continue its Fire Hydrant Flushing program in 2019. This year's program will be focusing on the south western side of our service area map. We will be flushing periodically throughout the spring, summer, and fall months from 8 AM—3 PM. During this time some customers may experience a brief change in water clarity or pressure. If this occurs your water pressure will come back to normal following the flushing procedures, if you experience a change in your water clarity, please run a faucet for a few minutes and your waters clarity will return to normal. Should you have any questions or concerns with this procedure, please call the Mount Joy Borough Authority Office at 717-653-5938, M-F 7 AM—4 PM.



**AREA TO BE  
FLUSHED IN 2019**



# 2018 Annual Drinking Water Quality Report

## Mount Joy Borough Authority

### PWSID# 7360091

Este informe contiene información muy importante sobre su agua de beber. Tradúzcalo ó hable con alguien que lo entienda bien. (This report contains very important information about your drinking water. Translate it, or speak with someone who understands it.)

#### WATER SYSTEM INFORMATION:

This report represents the Mount Joy Borough Authority and shows our water quality and what it means. The Mount Joy Borough Authority's public water system identification number (PWSID) is 7360091. If you have any questions about this report or concerning your water utility, please contact Joe Ardini, Authority Manager or Scott Kapcsos, Operations Manager/Superintendent at the Mount Joy Borough Authority office. The phone number is (717) 653-5938. We want you to be informed about your water supply, if you want to learn more, please attend any of our regularly scheduled meetings. The meetings are held on the first and third Tuesday of each month at 4:00 p.m. at the Borough Municipal Center.

#### SOURCE WATER Information:

Our water supply is from two (2) production wells that pump to the Carmany Road Water Treatment Plant, both wells are classified by the PA DEP as being GUDI (Groundwater Under Direct Influence) wells. The groundwater supplied by the wells comes from what is known as the Donegal Creek Drainage Basin; both wells and the treatment plant are in East Donegal Township. In addition to the Carmany Road Treatment Plant there is one (1) booster pumping station and three (3) water storage tanks. The average daily output from the water treatment plant for 2018 was 958,522 gallons per day.

Water Assessment of our sources was completed in 2004 by the PA Department of Environmental Protection (PADEP). The Assessment has found that our sources are potentially most susceptible to ex. road de-icing materials, accidental spills along roadways and railways, leaks in underground storage tanks and agriculture/residential spills. Overall, our sources have moderate risk of significant contamination. Summary reports of the Assessment are available by writing to the Mount Joy Borough Authority at P.O. Box 25 Mount Joy Pa. 17552 and will be available on the PADEP website at [www.dep.state.pa.us](http://www.dep.state.pa.us) (Keyword: "DEP source water"). Complete reports were distributed to municipalities, water supplier, local planning agencies and PADEP offices. Copies of the complete report are available for review at the PADEP South-central Regional Office, Records Management Unit at 717-705-4700.

Some people may be more vulnerable to contaminants in drinking water than the general population. Immuno-compromised persons such as persons with cancer undergoing chemotherapy, persons who have undergone organ transplants, people with HIV/AIDS or other immune system disorders, some elderly, and infants can be particularly at risk from infections. These people should seek advice about drinking water from their health care providers. EPA/CDC guidelines on appropriate means to lessen the risk of infection by *Cryptosporidium* and other microbial contaminants are available from the Safe Drinking Water Hotline (800-426-4791).

#### MONITORING YOUR WATER:

We routinely monitor for contaminants in your drinking water per federal and state laws. The following tables show the results of our monitoring for the period of January 1 to December 31, 2018. The State allows us to monitor for some contaminants less than once per year because the concentrations of these contaminants do not change frequently. Some of our data is from prior years in accordance with the Safe Drinking Water Act. The date has been noted on the sampling results table.

## DEFINITIONS AND ABBREVIATIONS:

- **Action Level (AL)** - The concentration of a contaminant which, if exceeded, triggers treatment or other requirements which a water system must follow.
- **Maximum Contaminant Level (MCL)** - The highest level of a contaminant that is allowed in drinking water. MCLs are set as close to the MCLGs as feasible using the best available treatment technology.
- **Maximum Contaminant Level Goal (MCLG)** - The level of a contaminant in drinking water below which there is no known or expected risk to health. MCLGs allow for a margin of safety.
- **Maximum Residual Disinfectant Level (MRDL)** - The highest level of a disinfectant allowed in drinking water. There is convincing evidence that addition of a disinfectant is necessary for control of microbial contaminants.
- **Maximum Residual Disinfectant Level Goal (MRDLG)** - The level of a drinking water disinfectant below which there is no known or expected risk to health. MRDLGs do not reflect the benefits of the use of disinfectants to control microbial contaminants.
- **Minimum Reporting Level (MRL)** - Detections below this level do not need to be reported.
- **Treatment Technique (TT)** - A required process intended to reduce the level of a contaminant in drinking water.

**Mrem/year** = millirems per year  
(a measure of radiation absorbed by the body)  
**pCi/L** = picocuries per liter (a measure of radioactivity)  
**ppb** = parts per billion, or micrograms per liter (µg/L)  
**ppm** = parts per million, or milligrams per liter (mg/L)  
**ppq** = parts per quadrillion, or picograms per liter  
**ppt** = parts per trillion, or nanograms per liter

## DETECTED SAMPLE RESULTS:

Inorganic Contaminants	MCL In CCR Units	MCLG	Highest Level Detected	Range of Detections	Units	Violation Y/N	Sources of Contamination
Barium (2018)	2	2	0.015	- - -	ppm	N	Erosion of natural deposits.
Nitrate	10	10	7	4.89 - 7	ppm	N	Soil runoff
Chromium	100	100	1	- - -	ppb	N	Erosion of natural deposits.
Synthetic Organic Contaminants	MCL In CCR Units	MCLG	Highest Level Detected	Range of Detections	Units	Violation Y/N	Sources of Contamination
Atrazine (ppb)	3	3	.26	.26 - .26	ppb	N	Runoff from herbicide used on row crops

## Lead and Copper Rule

Contaminant	Action Level (AL)	MCLG	90 <sup>th</sup> Percentile Value	Units	# of Sites Above AL of Total Sites	Violation Of TT Y/N	Sources of Contamination
Lead 2016	15	0	4.27	ppb	0	N	Corrosion of household plumbing
Copper 2016	1.3	1.3	0.19	ppm	0	N	Corrosion of household plumbing

If present, elevated levels of lead can cause serious health problems, especially for pregnant women and young children. Lead in drinking water is primarily from materials and components associated with service lines and home plumbing. Mount Joy Borough Authority is responsible for providing high quality drinking water, but cannot control the variety of materials used in plumbing components. When your water has been sitting for several hours, you can minimize the potential for lead exposure by flushing your tap for 30 seconds to 2 minutes before using water for drinking or cooking. If you are concerned about lead in your drinking water, testing methods and steps you can take to minimize exposure is available from the Safe Drinking Water Hotline or at <http://www.epa.gov/safewater/lead>.



### Disinfection Byproducts, Byproduct Precursors, and Disinfectant Residuals

Contaminants	MCL In CCR Units	MCLG	Highest Level Detected	Range of Detections	Units	Violation Y/N	Sources of Contamination
Haloacetic Acids (ppb)	60	n/a	13.2	0.0 - 13.2	ppb	N	By-product of drinking water disinfection
TTHMs [Total trihalomethanes] (ppb)	80	n/a	37.4	5.1 - 37.4	ppb	N	By-product of drinking water chlorination
Chlorine (in the distribution)	mrcl= 4	mrcl= 4	1.17	0.84 - 1.17	ppm	N	Water additive used to control microbes

Entry Point Disinfectant Residual							
Contaminant	Minimum Disinfectant Residual	Lowest Level Detected	Range of Detections	Units	Date of Lowest Detection	Violation Y/N	Sources of Contamination
Chlorine (at the water plant)	0.2	1.04	1.04 - 1.7	ppm	04/15/2018	N	Water additive used to control microbes.

### Turbidity

Contaminant	MCL	MCLG	Level Found	Sample Date	Range Found	Violation Of TT Y/N	Source of Contamination
Turbidity	TT=1 NTU for a single measurement	0	.09 NTU	5/26/2018	.01 - .09 NTU	N	Soil runoff
	TT= at least 95% of monthly samples ≤0.3 NTU		100%	1/1/2018 - 12/31/2018	n/a	N	

*Turbidity is a measure of the cloudiness of the water (in Nephelometric Turbidity Units). We monitor it because it is a good indicator of the effectiveness of our filtration system.*

### Total Organic Carbon

Total Organic Carbon (TOC)					
Contaminant	Range of % Removal Required	Range of percent removal achieved	Number of quarters out of compliance	Violation Y/N	Sources of Contamination
TOC	NA *	14% to 100%	0	N	Naturally present in the en-

*\*Our raw water TOC levels are low enough that no removal is required, but our treatment system removes even those low levels of TOC.*

**HEALTH EFFECTS:**

No MCL's or treatment techniques were exceeded.

**OTHER VIOLATIONS:**

No Violations

**EDUCATIONAL INFORMATION:**

The sources of drinking water (both tap water and bottled water) include rivers, lakes, streams, ponds, reservoirs, springs and wells. As water travels over the surface of the land or through the ground, it dissolves naturally-occurring minerals and, in some cases, radioactive material, and can pick up substances resulting from the presence of animals or from human activity. Contaminants that may be present in source water include:

- Nitrate in drinking water at levels above 10 ppm is a health risk for infants of less than six months of age. High nitrate levels in drinking water can cause blue baby syndrome. Nitrate levels may rise quickly for short time because of rainfall or agricultural activity. If you are caring for an infant, you should ask for advice from your health care provider.
- Microbial contaminants, such as viruses and bacteria, which may come from sewage treatment plants, septic systems, agricultural livestock operations, and wildlife.
- Inorganic contaminants, such as salts and metals, which can be naturally-occurring or result from urban storm water run-off, industrial or domestic wastewater discharges, oil and gas production, mining, or farming.
- Pesticides and herbicides, which may come from a variety of sources such as agriculture, urban storm water runoff, and residential uses.
- Organic chemical contaminants, including synthetic and volatile organic chemicals, which are by-products of industrial processes and petroleum production, and can also come from gas stations, urban storm water runoff, and septic systems.
- Radioactive contaminants, which can be naturally-occurring or be the result of oil and gas production and mining activities.

In order to ensure that tap water is safe to drink, EPA and DEP prescribes regulations which limit the amount of certain contaminants in water provided by public water systems. FDA and DEP regulations establish limits for contaminants in bottled water which must provide the same protection for public health. Drinking water, including bottled water, may reasonably be expected to contain at least small amounts of some contaminants. The presence of contaminants does not necessarily indicate that water poses a health risk. More information about contaminants and potential health effects can be obtained by calling the Environmental Protection Agency's Safe Drinking Water Hotline (800-426-4791).

**OTHER INFORMATION:**

Whether your tap water comes from surface or ground water, all drinking water sources are vulnerable to a variety of contaminants from a variety of activities. Preventing pollution is critical to protecting drinking water from contamination and reducing the need for costly treatment. Community involvement and individual action is the key to providing a safe supply of drinking water. Local Watershed Organizations greatly contribute to helping to clean up and preserve the water quality in our area streams.





REVENUES		
Acct #	Description	
08.364.601	Residential Sewer Service	\$ 2,160,080.00
08.364.602	Commercial Sewer Service	\$ 258,792.00
08.364.603	Industrial Sewer Service	\$ 123,435.00
08.364.604	Public/Other Sewer Service	\$ 119,600.00
08.364.605	Sewer Tapping/Connection Fees	\$ -
08.364.606	Water Meter Sales	\$ 15,000.00
08.364.607	Quarterly Surcharge Fees	\$ 25,000.00
08.364.608	Misc. Revenue/Reimbursements	\$ 5,000.00
08.364.609	Final Reading Fees	\$ 3,000.00
08.364.610	Interest Income	\$ 3,000.00
08.364.611	Lien Payoffs	\$ 300.00
08.364.612	Insurance Rebate	\$ 4,000.00
08.364.613	Energy Reimbursements	\$ 65,000.00
	<b>TOTAL REVENUES</b>	<b>\$ 2,782,207.00</b>
EXPENSES		
Admin.		
Acct #	Description	
08.400.782	Authority Manager Wages	\$ 42,076.35
08.400.783	Operations Manager Wages	\$ 36,131.27
08.400.784	Business Manager Wages	\$ 27,471.75
08.400.785	Administrative Assistant	\$ 22,844.38
08.400.790	Authority Board Members	\$ 3,750.00
08.400.791	Pension	\$ 48,092.98
08.400.792	Water/Sewer Billing	\$ 13,000.00
08.400.793	Office Supplies	\$ 2,000.00
08.400.794	Communication Expense	\$ 3,700.00
08.400.795	Engineering	\$ 20,000.00
08.400.796	Trustee	\$ 3,000.00
08.400.797	Legal Expense	\$ 25,000.00
08.400.798	Liability/Worker's Comp Ins.	\$ 53,000.00
08.400.799	Health Insurance	\$ 189,278.97
08.400.800	Building Rental/Reimbursement	\$ 35,000.00
08.400.801	Auditor Expense	\$ 17,000.00
08.400.802	Uniforms	\$ 3,000.00
08.400.804	Payroll Taxes/Fees	\$ 45,000.00
08.400.806	General Expense	\$ 3,000.00
08.400.807	Dues/Memberships	\$ 5,000.00
08.400.808	Training	\$ 3,500.00
08.400.809	Bank Charges	\$ 200.00
08.400.810	Advertising/Printing	\$ 3,000.00
	<b>SUBTOTAL</b>	<b>\$ 604,045.71</b>

Revenues collected in excess of expenses paid and certain accruals are used for specific purpose of capital improvements to the Authority's sewer system and the payment of principal and interest on the Authority's outstanding debt.

COLLECTION EXPENSES		
Acct #	Description	
08.428.710	Wages	\$ 138,463.78
08.428.712	Supplies	\$ 3,000.00
08.428.714	Utilities	\$ 37,000.00
08.428.715	Equipment Maintenance	\$ 5,000.00
08.428.716	Repairs/Maintenance	\$ 70,000.00
08.428.717	Vehicle Expense	\$ 11,000.00
08.428.718	General Expense	\$ 1,000.00
08.428.719	Equipment Purchase/Tools	\$ 4,000.00
08.428.720	Service Connections	\$ 1,500.00
08.428.754	Meters	\$ 25,000.00
	<b>SUBTOTAL</b>	<b>\$ 295,963.78</b>
TREATMENT & DISPOSAL EXPENSES		
Acct #	Description	
08.429.730	Wages	\$ 255,373.11
08.429.732	Bio-solids Hauling	\$ 30,600.00
08.429.733	Testing	\$ 15,000.00
08.429.734	Chemicals	\$ 255,000.00
08.429.735	Supplies/Lab Supplies	\$ 16,000.00
08.429.736	Utilities	\$ 175,000.00
08.429.737	Equipment Purchase/Tools	\$ 3,000.00
08.429.738	Plant Repairs/Maintenance	\$ 82,000.00
08.429.739	Equipment Maintenance	\$ 6,800.00
08.429.740	General Expense	\$ 6,500.00
08.429.742	Vehicle Expense	\$ 6,000.00
	<b>SUBTOTAL</b>	<b>\$ 851,273.11</b>
	<b>TOTAL EXPENSES</b>	<b>\$ 1,751,282.60</b>
	DEBT SERVICE	\$ 994,641.76
	FUND BALANCE FOR BRIF	\$ 36,282.64
	<b>TOTAL BUDGET</b>	<b>\$ 2,782,207.00</b>

2019-2020  
Mount Joy Borough  
Authority  
Wastewater System Budget

REVENUES		
Acct #	Description	
06.378.601	Residential Water Service	\$ 1,821,150.00
06.378.602	Commercial Water Service	\$ 246,862.00
06.378.603	Industrial Water Service	\$ 346,038.00
06.378.604	Public/Other Water Service	\$ 108,630.00
06.378.605	Water Tapping/Connection Fees	\$ -
06.378.606	Water Meter Sales	\$ 15,000.00
06.378.607	Lease/Rent Agreements	\$ 74,640.00
06.378.608	Misc. Revenue/Reimbursements	\$ 5,000.00
06.378.609	Final Reading Fees	\$ 3,000.00
06.378.610	Interest Income	\$ 3,000.00
06.378.611	Lien Payoffs	\$ 300.00
06.378.612	Insurance Rebates	\$ 4,000.00
	<b>TOTAL REVENUES</b>	<b>\$ 2,627,620.00</b>
EXPENSES		
Admin.		
Acct #	Description	
06.400.782	Authority Manager Wages	\$ 42,076.35
06.400.783	Operations Manager Wages	\$ 36,131.27
06.400.784	Business Manager Wages	\$ 27,471.75
06.400.785	Administrative Assistant	\$ 22,844.38
06.400.790	Authority Board Members	\$ 3,750.00
06.400.791	Pension	\$ 48,092.98
06.400.792	Water/Sewer Billing	\$ 13,000.00
06.400.793	Office Supplies	\$ 2,000.00
06.400.794	Communication Expense	\$ 3,700.00
06.400.795	Engineering	\$ 25,000.00
06.400.796	Trustee	\$ 3,000.00
06.400.797	Legal Expense	\$ 25,000.00
06.400.798	Liability/Worker's Comp Ins.	\$ 53,000.00
06.400.799	Health Insurance	\$ 189,278.97
06.400.800	Building Rental/Reimbursements	\$ 35,000.00
06.400.801	Auditor Expense	\$ 17,000.00
06.400.802	Uniforms	\$ 3,000.00
06.400.804	Payroll Taxes/Fees	\$ 45,000.00
06.400.806	General Expense	\$ 3,000.00
06.400.807	Dues/Memberships	\$ 26,500.00
06.400.808	Training	\$ 3,500.00
06.400.809	Bank Charges	\$ 200.00
06.400.810	Advertising/Printing	\$ 3,000.00
	<b>SUBTOTAL</b>	<b>\$ 630,545.71</b>

Revenues collected in excess of expenses paid and certain accruals are used for specific purpose of capital improvements to the Authority's water system and the payment of principal and interest on the Authority's outstanding debt.

TREATMENT EXPENSES		
Acct #	Description	
06.448.702	Wages	\$ 163,703.26
06.448.703	Supplies & Lab Supplies	\$ 8,000.00
06.448.704	Testing	\$ 19,000.00
06.448.705	Repairs/Maintenance	\$ 62,500.00
06.448.706	Chemicals	\$ 140,000.00
06.448.707	General Expense	\$ 500.00
06.448.708	Vehicle Expense	\$ 8,000.00
06.448.709	Utilities	\$ 100,000.00
06.448.710	Equipment Purchases/Tools	\$ 1,500.00
06.448.711	Equipment Maintenance	\$ 2,000.00
	<b>SUBTOTAL</b>	<b>\$ 505,203.26</b>
TRANSMISSION / DISTRIBUTION EXPENSES		
Acct #	Description	
06.449.752	Wages	\$ 138,463.78
06.449.753	Supplies	\$ 3,000.00
06.449.754	Meters	\$ 25,000.00
06.449.755	Fire Hydrant Expenses	\$ 10,500.00
06.449.756	Repairs/Maintenance	\$ 73,000.00
06.449.757	Equipment Maintenance	\$ 5,000.00
06.449.758	Equipment Purchases/Tools	\$ 4,000.00
06.449.759	Service Connections	\$ 1,500.00
06.449.760	Vehicle Expense	\$ 11,000.00
06.449.761	General Expense	\$ 1,000.00
06.449.762	Utilities	\$ 30,000.00
	<b>SUBTOTAL</b>	<b>\$ 302,463.78</b>
	<b>TOTAL EXPENSES</b>	<b>\$ 1,438,212.75</b>
	DEBT SERVICE	\$ 823,163.50
	FUND BALANCE FOR BRIF	\$ 366,243.75
	<b>TOTAL BUDGET</b>	<b>\$ 2,627,620.00</b>

2019-2020  
Mount Joy Borough  
Authority  
Water System Budget



## 23



**MOUNT JOY BOROUGH AUTHORITY**  
PO Box 25  
Mount Joy, PA 17552

PRSRT STD  
ECRWSS  
U.S. POSTAGE  
PAID  
EDDM RETAIL

**LOCAL  
POSTAL CUSTOMER**

This report is sent via bulk mail, therefore some residents outside our service area may receive this report.

## **MOUNT JOY BOROUGH AUTHORITY**

21 East Main Street, P.O. Box 25  
Mount Joy, PA 17552  
TEL: (717) 653-5938  
FAX: (717) 653-6680  
E-mail: [authority@mountjoypa.org](mailto:authority@mountjoypa.org)  
Web: [www.mountjoyborough.com](http://www.mountjoyborough.com)

### CONSULTANTS

Arro Consulting, Inc., *Engineer*  
Barley, Snyder, Senft & Cohen, *Solicitor*  
Trout, Ebersole & Groff, *Auditors*  
Fulton Bank, *Trustee*  
Northwest Bank, *Depository*

## **The Current State of your Water & Wastewater Systems**

The water supply is currently made up of two wells that provide raw water from the same aquifer to the Carmany Road Treatment plant. After the water is pumped to the plant the process of filtration, softening, nitrate reduction and disinfection are completed. The next step consists of approximately 958,522 thousand gallons of potable water being pumped into more than 70 miles of water distribution system and three storage tanks which combined hold over 3 million gallons of water. The water in the distribution system provides service to all 5,030 connections and supplies water for fire protection to more than 501 fire hydrants. In addition, there is a water booster station located in the distribution system to increase pressure in the western part of the community.

The wastewater system consists of more than 68 miles of sewer mains with more than 1,375 manholes. Approximately 20 percent of the daily generated wastewater flows to the wastewater plant by gravity, the remaining 80 percent is conveyed to the plant by 8 different sewage pump stations located throughout the collection system. Once at the plant the approximate 1,104,000 gallons of wastewater is treated by grit removal, clarifier sedimentation, alum addition, final clarification, methanol addition for nitrogen reduction, filtration and ultraviolet disinfection prior to being discharged into the Little Chiques Creek. In 2018, the wastewater treatment plant removed more than 407 dry tons of Class A bio-solids, which some local area farming operations utilize to offset nutrient needs of the soils.

**© 2019 Mount Joy Borough Authority**