



Mount Joy Messenger

www.mountjoyborough.com

A Great Place to Live, Work and Play!

Fall/Winter 2015-2016

White Goods & Tires Will Be Collected During the Week of October 19 on Your Regular Trash Collection Day!

White Goods \$12- Refrigerators, Washers, Dryers, Stoves, Air Conditioners, Dishwashers, Freezers, Hot Water Heaters, Dehumidifiers, Furnaces, Microwaves, etc. (APPLIANCES ONLY!)



Tires \$2- May be on or off the rim.

Residents are asked to place these items at their regular trash collection site on the evening before pickup. A special tag must be placed on each item to be disposed of. Tags may be purchased at the Borough Office, M-F, 7 AM-4 PM, or at the Milanof-Schock Library, 1184 Anderson Ferry Road, during their hours of operation. Tags **MUST** be purchased no later than 2 PM the day before your collection.



YOU MUST HAVE A TAG ON YOUR ITEM IN ORDER FOR IT TO BE COLLECTED!

Place your holiday trees curbside where you place your normal garbage prior to Saturday, January 9. If your tree is not collected on this day, please call and leave a message at the Borough Office, 653-2300, so we can get it collected. **Please DO NOT put trees in bags or wrap in plastic.**



Holiday Tree Collection
Saturday, January 9, 2016

NEW Leaf Collection Schedule for 2015

Leaf Collection will start November 9 and run through December 11 in the Borough. The following guidelines are to be followed for those participating in the pickup.

- Leaves must be raked into piles at the edge of the street or alley in plain view and far enough away from parked vehicles. The Public Works Department is not permitted to go onto anyone's property to collect leaves.

- Remove large sticks, branches, metal, lumber, rocks and/or plastic objects from leaf pile. Such items may cause damage to the equipment or employees and cause a delay in collection.

- If leaves piled by the curb have not been picked up within one week, please call the Borough Office at 653-2300 and leave your name and address as a reminder.

- Please do NOT bag leaves.

Trick-Or-Treat



Friday, October 30
6-8 PM

Trash Collection Procedures & Guidelines

Reference map on page 3 to know what day your trash will be collected.

Monday– East Ward, Tuesday– West Ward, Wednesday– Florin Ward



Collection can begin as early as 5 AM on your assigned pickup day. Basic service includes three (3) 32-gallon refuse bags/cans. Each bag/can is limited to 30 pounds. Customers are asked to place trash/recycling containers at your pickup site the evening before your assigned day and should be removed promptly after 6 PM. If your trash is missed, please do not remove it from your pickup site. Call the Borough Office before 11 AM the next day at 653-2300 and arrangements will be made to have it picked up.

Special Tags

- **ORANGE (Extra Bag Tag) \$1.50 Each-** For additional 32-gallon bags or cans, not weighing more than 30 pounds each.
- **RED (Oversized Items) \$4 Each-** For refuse that will not fit into refuse containers. (ex. Small furniture, carpet, and like items). **Limit of two per week.** Covered devices (ex. TV's and Computers) no longer accepted.
- **GREEN (Grass Bag Tag) \$2 Each-** For bags of grass that need disposed of. **We strongly encourage you to recycle your grass whenever possible.**
- **KRAFT BAGS (Yard Waste excluding grass) \$0.50 Each-** For Woody Waste only. Kraft Bags (trimmings and shrubbery) shall not weigh more than 30 pounds. **(Reference page 4 for the collection schedule.)**

The following list of items are collected curbside, single-stream for recycling:

- Aluminum
- Clear Glass
- Colored Glass
- Steel Cans
- Plastics
- Paper (Chipboard, Corrugated Cardboard, Magazines, Newsprint, Office Paper, and Telephone Books)
- Rule of Thumb: Anything with any number 1-7 is collected with your recyclables.

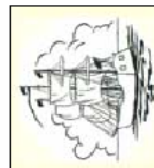
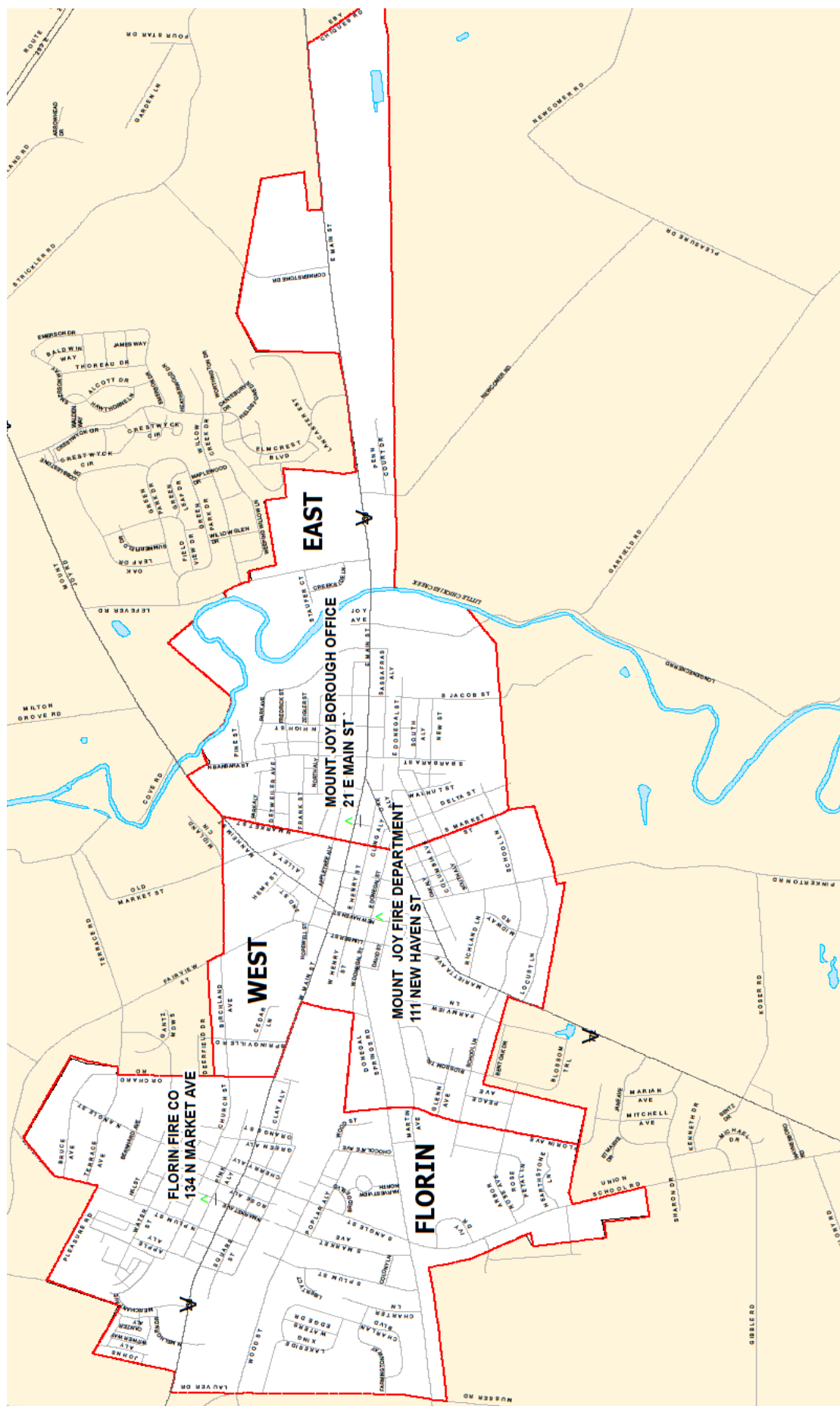


Batteries should also be recycled. Batteries **MUST** be placed in a special battery recycle bag. Bags are available at the Borough Office, 21 East Main Street, Mount Joy, **FREE** of charge. Place batteries in the bag and set the bag on top of your recycle bin for collection.

Please note, while Lebanon Farms Disposal is our refuse and recycling company, what they will accept from each town for recycling is different. Each town and person has a separate contract with specific items that are allowed to be collected for recycling. If you want to know what is allowed to be put out for recycling, please do **NOT** reference Lebanon Farms Disposal's website. Use the list provided above.

Cardboard Recycling
Dumpsters Available
At 2 Locations

Mount Joy Borough has two cardboard **ONLY** recycling dumpsters at the Parks Department Building, 134 North Market Avenue, and two cardboard **ONLY** recycling dumpsters located in the parking lot of Little Chiques Park on Park Avenue. There is a slot in each dumpster that you can just slide the cardboard through. If anyone has any questions or comments, please call the Borough Office at 653-2300.



Mount Joy Borough Polling Locations

Month	Number of people
January	1,200
February	1,500
March	1,800
April	2,000
May	2,200
June	2,500
July	2,800
August	3,000
September	2,500
October	2,000
November	1,500
December	1,200

Source: Lancaster County GIS copyright (c) 2008. This map to be used for reference or illustrative purposes only. This map is not a legally recorded plan, survey, or engineering schematic and it is not intended to be used as such.

For complete disclaimer see
<http://www.co.lancaster.pa.us/qisdisclaimer>

COMPOST SITE

MOUNT JOY BORO/EAST DONEGAL TWP FACILITY REGULATIONS:

- The site accepts yard waste materials (sticks, branches, etc.).
- The following items will **not** be accepted: grass clippings, tree branches/trunks over 19" in diameter and/or over 8' in length, tree stumps, construction/demolition waste (boards, etc.).
- Yard waste is not required to be bagged, but if you prefer to do so, Kraft Bags can be purchased at the Borough Office at 21 East Main Street, Mount Joy, or at the Milanof-Schock Library, 1184 Anderson Ferry Road, Mount Joy.



Hours & Directions

From East Main Street, turn onto S. Barbara St., make a left onto E. Donegal St., then a right onto S. Jacob St. Follow S. Jacob St. until you can go no further. Arrive at the Compost Facility.

Dates Site Is Open for Drop Offs

Fridays 3-6 PM

September 25
October 9
October 23
November 6
November 20

Saturdays 9 AM—Noon

September 26
October 10
October 24
November 7
November 21

Woody Waste Pickup Schedule

Yard waste collection will take place on your regular collection day during the following weeks:

September 20

October 4

October 18

November 1

After November 1, 2015, the compost site will be open by appointment ONLY until spring of 2016.



Recycle your CFL

Bring your old CFL bulbs to the Mount Joy Borough Office, 21 East Main Street, Mount Joy, to be recycled.



Commercial Recycling Required

Pennsylvania's Act 101 and Mount Joy Borough's Ordinance 487 require all commercial establishments to recycle.

Option one is to have your materials collected curbside by Mount Joy Borough's licensed hauler. You would pay a semi-annual bill directly to the borough. There is a 6-bag or can limit (30 lbs. each maximum) for commercial establishments with the Borough's refuse and recycling program. You would also be provided with a recycling bin.

Option two is to opt out of the Borough's collection program and contract with a private hauler. Annual proof of collection is required with this option.

Detailed requirements of this program can be found on the Borough Website: www.mountjoyborough.com or obtained at the Borough Office, 21 East Main Street, Mount Joy.



Buch Funeral Home

Veteran's Benefits – Know What's Available

Buch Funeral Home is honored to assist families of the brave Americans who have served our country. Every honorably discharged veteran is entitled to one U.S. flag, provided by the VA. The flag is typically displayed inside the casket during visitation and draped over the casket during travel to the cemetery or displayed with the cremation urn.

In addition to a U.S. flag, following are other important veteran's benefits:

Free Death Certificates - In the Commonwealth of Pennsylvania, free certified copies of the death certificate are available for the veteran, spouse or dependent child of the veteran.

Presidential Memorial Certificate - This certificate, designed to honor a deceased veteran with an honorable discharge, is signed by the sitting President of the United States at the time of the application.

Military Funeral Honors - This ceremony consists of two members of the armed forces who will fold the flag, play Taps, and present the flag to the designated next of kin.

Burial in a National Cemetery - For the most part, any honorably discharged veteran is eligible for burial in a national cemetery. If approved, the grave space, outer burial container, headstone or marker and interment fees are provided free of charge for the veteran, spouse and dependent children.

Headstone or Marker - Honorably discharged veterans are entitled to an inscribed headstone or marker to mark their grave at any cemetery. For burial in a private cemetery, the marker is delivered at no cost. However, most cemeteries will charge for the foundation and installation of the veteran's headstone or marker.



Barry Sauder

Office: 717-299-7199

Serving Lancaster, Mount Joy, and surrounding areas

customplumbing@embarqmail.com



Ferne Silberman

Your Local Expert
Working for the community

Direct: 717.653.2374

Cell: 717.575.8626

E-mail: fernesilberman@comcast.net

www.fernesilberman.com

Office: 717.653-2646 x.102

65C East Main Street
Mount Joy, PA 17552



BERKSHIRE HATHAWAY | Homesale Realty
HomeServices



1939 Willow Street Pike - Lancaster
Gorgeous, Well Maintained Home with
Character, 4 Bedrooms, Detached Garage
Hardwood Floors – \$172,900



605 Alcott Drive - Mount Joy
Four Seasons a 55+ Community. Gorgeous
3 bedroom, 2 Bath home with upgrades.
2-Car Garage – \$298,500



326 Farmview Lane - Mount Joy
The Orchards - HOA for Mow & Snow
Spacious Master Bedroom Suite w total
Of 3 bedrooms, 2 1/2 baths. \$139,900



UNDER CONTRACT

1209 Janet Drive, Mount Joy
Spacious - 3 Bedrooms - 2 Baths,
Gorgeous Lot
\$199,900

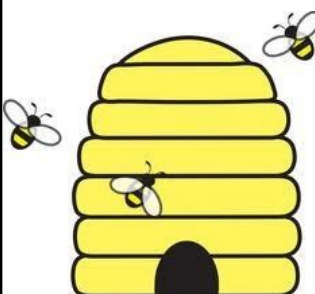


1059 Reagan St., Mount Joy
Stunning & Spacious! 3 BR, 3 BA Ranch
w/finished basement. 2-car garage
\$269,900

- 25+ years of experience in the local marketplace
- The "local gal"
- Returns phone calls promptly
- Cares about the client
- Knows the local community



Interested in Bees ?



On Wednesday evening, October 21, between 6-8 PM, Jim Pinkerton, President of the Lancaster County Beekeepers Society <http://www.lancasterbeekeepers.org/> will be presenting a workshop on the importance of Pollinator Bee's Nest in your garden. This workshop will be held in the Borough Council Chambers at 21 East Main Street. There will be a PowerPoint presentation and handouts. There will also be samples of the nests on hand to show you how easy they are to make. The Borough will be adding one or two nests to their Community Rain Garden in the rear of the Office Building at 21 E. Main St.



Honored to Serve Our Community

Jonathan R. Sheetz

Supervisor

Andrew D. Dieck

Licensed Director

16 East Main Street, Mount Joy, Pennsylvania



**Rainbow's End Youth Services
Craig Heisey Memorial 5k
105 Fairview Street
Victoria Heisey Memorial Kids Fun Run
Mount Joy, PA 17552**

Rainbow's End Youth Services is pleased to announce the 2015 Craig Heisey Memorial 5k and Victoria Heisey Kids Fun Run. This event is scheduled for **Saturday, November 7, 2015, at 9 AM**. The race proceeds will benefit Rainbow's End Youth Services (REYS Youth Center), whose programs and services provide free community After-School and Evening Programs.

Registration is \$25 and includes a long-sleeve t-shirt for all runners registered prior to October 24. Runners may register online at www.reys.org or by phone at 717-653-9511.

This year's race includes a \$100 cash prize for the 1st overall male and female runners and a \$50 cash prize for the 2nd overall male and female runners. Awards will also be given for top finishers in age group categories.

Local residents who are not able to run or walk in this year's event but would like to contribute towards the community efforts of Rainbow's End Youth Services may send tax-deductible donations to the following address: 105 Fairview Street, Mount Joy, PA 17552.

On Behalf of the Race Committee,
Joel Hughes
REYS Executive Director
717-653-9511
jhughes@reys.org



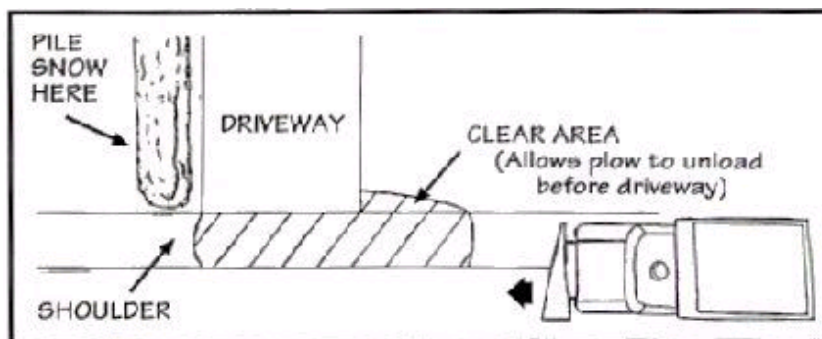
Winter Weather



As with any time of the year, no one knows what the weather will bring. The Borough Public Works Department would like Mount Joy residents to know that they are ready for the upcoming winter season.

Here are some tips for residents about the Borough's winter operations:

- Please do not attempt to pass a salt or plow truck. While the truck may be moving slowly, remember that what is ahead of the salt/plow truck is usually untreated and/or unplowed roadway that could be extremely hazardous.
- Streets are prioritized for the application of salt and antiskid material, with the main arteries receiving attention first and other selected areas being handled after the main arteries are treated.
- Plowing operations begin on major arteries when the snow depth reaches at least 4"-5". Other streets typically are not plowed unless the snow depth reaches 5"-6". When the main arteries have been cleared, plowing begins on the balance of the streets in the Borough. The Public Works Department has divided the Borough into four quadrants for plowing. Typically there will be equipment working in each of the four quadrants at the same time. Total plowing time for a 6"-8" snowfall is usually between 10 and 12 hours. More snow means more plowing time.
- Please park off street if possible.
- Throwing, blowing, or plowing snow into the street is prohibited by the Borough ordinance and can cause a dangerous situation for vehicles. If you have a commercial snow removal vendor doing your snow removal, please remind him/her of this ordinance.
- Please clear snow from fire hydrants and stormwater inlets on or by your property.
- Clear an area "upstream" of the driveway opening to allow the snowplow to unload before it reaches the driveway opening.



Snow and Ice Removal

Snow and ice are to be removed from all sidewalks in front of or along-side properties within 24 hours after such snow and ice has stopped. There shall be a clear walk which must be at least 3' wide along the entire length of the sidewalk. In the event the snow and ice becomes so hard it cannot be removed, sand or another abrasive can be placed upon the sidewalk to make travel reasonably safe and, as weather permits, proceed to clear a path.

An accumulation of snow and ice on a building or any other structure which is liable to fall on any sidewalk, roadway or other public way must be removed within a reasonable time, but no later than 24 hours after the cessation of any fall of snow, sleet or freezing rain.

Tips to prevent storm water pollution during the winter months:

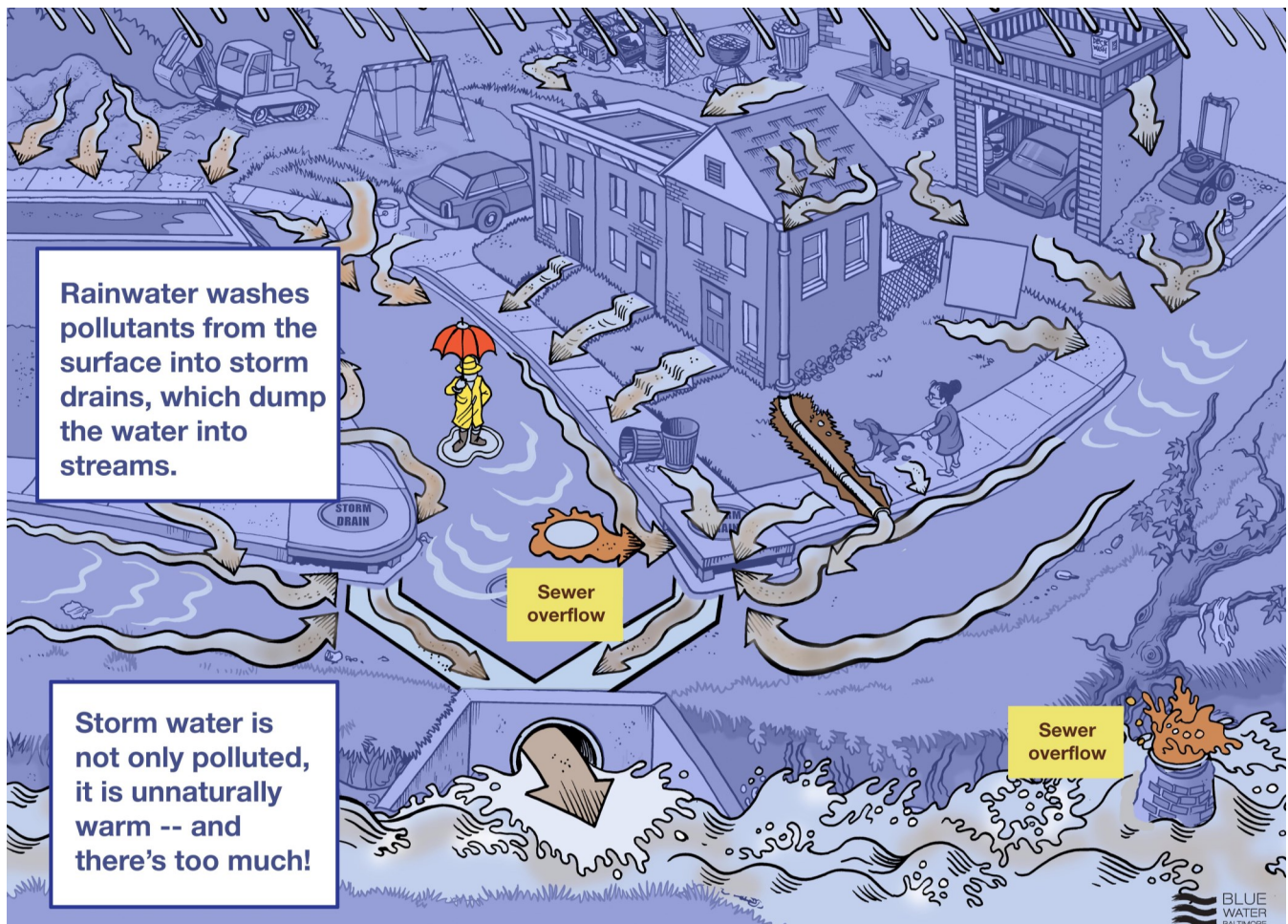
Be stingy with your salt application and consider alternative salting methods. Road salt can be harmful to plants, aquatic life and drinking water supplies. Salt alternatives like potassium acetate (KA), calcium magnesium acetate (CMA), or sand are less damaging to homes and landscaping and can be used to de-ice and improve traction on a walkway or driveway. If you do apply salt, shovel first then apply as little as possible.

Rethink rinsing your garage floor. While it's tempting to take out the hose and wash that ugly, gray sludge and salt off your car and out of your garage on a mild winter day— please stop! Residue left from road salt, oil, gas and other road pollutants drips from your car and ends up on the garage floor. Your garage runoff most likely drains into a storm sewer drain, ditch, river, or lake, which means you're flushing pollutants from your garage right into our streams and eventually into the Chesapeake Bay. One alternative is to clean your car by taking it to a commercial car wash where the drains flow to waste water treatment facilities. A clean car means a cleaner garage.

Watch your waste. Picking up pet waste is just as important in the wintertime as it is in the warmer months. Animal waste can be a significant source of harmful bacteria and disease. Cooler temperatures and frozen soil slow down the decay process. When the snow finally does melt, you will have a very unpleasant surprise waiting if pet waste is not removed daily.

Cover bare soil. If you are doing earthwork in the winter, remember to maintain your construction site erosion and sediment control practices to keep soil and other pollutants on your site and out of our streams. Late winter thaws and saturated soil conditions can lead to a very muddy spring. So be prepared and maintain erosion and sediment control practices all winter long, and plant winter ground cover on areas with bare soil to prevent soil erosion.

If you have questions on what you can do to reduce water pollution in the winter months, contact your local Soil and Water Conservation Districts. Be a Conservation Crusader and help keep our watersheds wonderful even in the winter!



Wheels For Wishes is a car donation program benefiting Make-A-Wish® Philadelphia, Northern Delaware and Susquehanna Valley. We are proud to offer an easy way to recycle or donate unwanted cars, trucks, motorcycles, SUVs, RVs, or even boats, by turning them into a wish for a local child.



Visit us for more information at: <http://philadelphia.wheelsforwishes.org/>

Greetings from the Mount Joy Area Historical Society!

Our Schoolhouse project continues, and we're getting excited to see the finished product! We've had plenty of help with the renovation, and want to say a big **"thank you"** to all the local vendors who have contributed time, talent and materials to the schoolhouse project at either a reduced cost or completely *gratis*!

MJAHS wants to invite the community to our last two meetings of 2015, held the 3rd Monday of the month, beginning at 7 PM. **That's Oct. 19 and Nov. 23.** Parking is available those nights at the rear of Rainbow's End Youth Service Center or at the rear of the swimming pool parking lot.

Oct. 19 - Historian **Nic Ellis**, of York Springs, PA, will discuss William Henry "Lebbie" Lebkicher, Milton S. Hershey's friend and right-hand man during the development of the Hershey candy dynasty.

Nov. 16 – **Tim and Sue Mackey**, Lancaster, will present living history in the persons of President James Buchanan and his niece and White House hostess, Harriet Lane.

AND, we now have our 2-disk DVD set available for sale at a cost of **\$20 for Society members** and **\$25 for non-members**. **"Glimpses of the Past: Joe Shaeffer's Home Movies from 1937-1955"** is narrated by the late Vera Albert, Jean Heilig Ellis and Susan Schlosser Hostetter. Call the Society at 653-4718 to get your copy, or stop by the building on Sunday afternoons from 1 – 4 PM. As always, please support the Society by joining as a member – see our website for details regarding that at www.mountjoyhistory.org

Coming in December: Our newest MJAHS book: "The Story of Mount Joy's Christmas Decorations." ON SALE FOR \$10 AT WINTERFEST!



We're excited to introduce our new Logo! We would like to thank our Logo Committee and Linda Eberly of Eberly Designs for the creation of a logo that reflects our vision of being a dynamic destination of a learned and connected community. The logo captures the distinctive tower in the center of the Library as well as the range of library users that come to the Library to access our many resources. We are more than books (although books continue to be important - as is reflected in the logo's outline of an open book), but also the Library is a place where people come to be connected - to technology, to services and programs, and more importantly to each other!

The Library has a few "Save the Date" events coming up.

The Friends of the Milanof-Schock Library will sponsor an Isaac's Fundraiser Thursday, October 1 from 5-9 PM at the Mount Joy Isaac's. Server forms may be picked up at the Library.

We will be holding our 13th Annual Benefit Auction on Friday, November 13, 2015, at the Gathering Place in Mount Joy. Festivities will begin at 5:30 PM. Try your luck with the Chinese and Silent Auctions! Donations (monetary and service/merchandise) will be accepted through October. Tickets are available for purchase at the Library's Circulation Desk and cost \$40 each, which includes a delicious meal, beverages, a dessert buffet, and entertainment. Please call the Library for more information. 653-1510

The Friends of the Milanof-Schock Library will be holding their Annual Gift, Book and Bake Sale November 19-21 at the Library. Hours will vary.

The Library will once again take part in the ExtraGive held this year on Friday, November 20. Participating in this 24-hour fund-drive is a great way to support your Library. Please visit the Library's web page www.mslibrary.org or call for more information.



Make sure to follow the Library on Facebook and Twitter!

Connect 4 Life at Juniper Village at Mount Joy

For nearly two decades, Juniper Communities has been a thought leader in senior living care, developing innovative service and delivery programs to enhance aging, lifestyle and resident health. Embracing the current changing landscape of healthcare and how it is delivered, Juniper is introducing its Connect 4 Life model which reduces hospital admissions and readmissions; improves medication reconciliation which results in fewer medication errors; and increases functional ability at all its personal care communities including Juniper Village at Mount Joy.

With more than 20 communities across the country, 12 of which are in Pennsylvania, the company is receiving industry accolades for its C4L model.

C4L has three key components and offers a unique alternative to more traditional senior living providers. The opportunities that the model capitalizes on include:

Intentional use of data and outcomes to drive quality, define performance and guide operations. Integrating primary care physicians directly into senior living settings via a patient-centered medical home model.

Cultivating wellbeing through therapy-driven physical wellness programming and seamless access to other services through strategic partnerships and alliances.

"Achieving better health for older adults will depend heavily on a multi-pronged approach to wellness – one that encompasses physical health, mental and spiritual wellness, social interaction and much more," explains Lynne Katzmann, CEO and Founder of Juniper Communities. "Our integrated Connect 4 Life model does just that. It emphasizes a richly active and engaged approach to healthy aging and ultimately decreasing costs."

To learn more about senior living communities and take a tour of Juniper Village at Mount Joy, call Debra Miller at (717) 492-9692 or visit www.junipercommunities.com. Juniper Village is located at 607 Hearthstone Lane.



Activities abound at Juniper Village. The 3rd annual "Dog Days" of summer dog show was a big hit with the residents, families and staff. Juniper's prestigious judges "the residents" chose Best of Show, Best Dressed and Best Trickster. The K-pets teams which is a pet therapy organization brought the show to life.



GROUND HOG DAY

FEBRUARY 2, 2016



It's hard to believe that it is almost the end of 2015 and before you know it, it will be 2016. Think positive thoughts of the weather, and ignore the dire predictions that the *Farmer's Almanac* has in store for us. February 2 is Ground Hog Day and Mount Joy Minnie will once again come-out of hibernation. Hopefully it will be a beautiful, sunny, but cold Tuesday and her prognostication will be that Spring is coming early in 2016 and we have wonderful things to look forward to. The picture above is of the hat contest winners in 2015 and we will continue that contest in 2016. So don your craziest hat, and come out to the Rotary clock by 7 AM and join in the festivities. American Legion Post 185 will once again have coffee and hot chocolate topped off with a sweet treat for everyone. What a great way to start your day with a neighbor, friend, or meet new friends and neighbors. You never know who will be there.

This is a Mount Joy Chamber of Commerce sponsored event so just think of it as an early morning social. As always, this is an "all weather" event, so regardless of the weather Mount Joy Minnie will make her appearance. We will be under the Berkshire Hathaway canopy in case of inclement weather, across the street from the Rotary Clock. Don't forget, wear your spring bonnet, top hat, or any crazy hat and meet us at the Rotary Clock at 7 AM on Tuesday, February 2nd. We look forward to seeing you there.



Mount Joy Chamber Welcome Bags

New to the Mount Joy area or just bought your first home? Be sure to stop at the Mount Joy Chamber of Commerce & Visitor's Center to pick up your Chamber Welcome Bag! This bag is available to you by the Mount Joy Chamber of Commerce members and is full of helpful information for the Mount Joy area along with a Chamber directory, coupons, pens, brochures, business cards and much more.

To receive your Chamber Welcome Bag just stop in the Chamber office at 62 E. Main Street, Suite 1, Tuesday through Friday from 10 AM-4 PM. For more information you can call the Chamber office at 653-0773 or email info@mountjoychamber.com or visit us at www.mountjoychamber.com



Joel A. Langdon, Agent
410-A West Main Street
Mount Joy, PA 17552
Bus: 717-653-2212
joel@joellangdon.com

I'm your agent for that.

No one wants to pay for unnecessary extras and with my help, you won't have to. I'll help make sure you understand your options, and that you have the best coverage at the best price.
**Like a good neighbor,
State Farm is there.®
CALL ME TODAY.**



1001183.1

State Farm, Home Office, Bloomington, IL

Save A Warrior

22 Veterans Commit Suicide Each Day

Founded by Ronald (Jake) Clark— a 1984 Graduate of Donegal High School—Save A Warrior is a safe, innovative, and evidence based resiliency program that offers an alternative to suicide so that returning warriors may thrive.

This program has been the subject of three documentary films including CNN's "The War Comes Home: Soledad O'Brien Reports"

Please give our Warriors a few minutes of your time and visit www.saveawarrior.org and info@saveawarrior.org.



Donations Welcome:

Save A Warrior

PO Box 2416

Malibu, CA 90265

Or

Text "Warrior" to 234-244-7283 (BIG-SAVE)

Or

Visit www.saveawarrior.org/donate

Summer is nearly past and we wonder where the time has gone. Soon there will be leaves falling from the trees and old man winter will be knocking on the door. We have had a busy year with projects here at MJBA, the completion of the Church Street Booster Station and Waterline upgrade. This replaced a station built in the early 1990's along with the replacement of waterlines and new fire hydrants on portions of Square Street, Apple Alley and South Market Ave. Replacement of 2,200 feet of new water main and installation of new fire hydrants on a portion of Park Ave & North High Street. Pump Station #2 Upgrade on Donegal Springs Road which replaces the current station that was built in the mid 1960's. This station is scheduled to be operational in early December 2015.



Mount Joy Borough Authority

Use water...but use it wisely

9 Things you can do to save water in the bathroom

1. Check toilets for leaks.
2. Stop using the toilet as an ashtray or wastebasket.
3. Put plastic bottles in your toilet tank.
4. Take shorter showers.
5. Install water-saving showerheads or flow restrictors.
6. Take baths.
7. Turn off the water after you wet your toothbrush.
8. Rinse your razor in the sink.
9. Check faucets & pipes for leaks.

10 Things you can do to save water outside

1. Water your lawn only when it needs it.
2. Deep-soak your lawn.
3. Water during the cool parts of the day.
4. Don't water the gutter.
5. Plant drought-resistant trees & plants.
6. Put a layer of mulch around trees & plants.
7. Use a broom, not a hose, to clean driveways & sidewalks.
8. Don't run the hose while washing your car.
9. Tell your children not to play with the hose & sprinklers.
10. Check for leaks in pipes, hoses, faucets & couplings.

6 Things you can do to save water in the kitchen & laundry

1. Use your dishwasher only for full loads.
2. Use your washing machine only for full loads.
3. If you wash dishes by hand, don't leave the water running for rinsing.
4. Don't let the faucet run while you clean vegetables.
5. Keep a bottle of drinking water in the refrigerator.
6. Check faucets & pipes for leaks.

Regulations from DEP Regarding Water Main Breaks

There is very specific protocol required by DEP (Department of Environmental Protection) when a water main break occurs. Depending on how and what type of break happens, precautionary boil notices will be put out. When you see the boil notice, there isn't necessarily a problem; we are just following DEP protocol. Please feel free to contact the Mount Joy Borough Authority at 653-5938 if you see a boil notice and have any questions.



Water & Sewer Rate Schedule



Mount Joy Borough Authority strives to keep water and sewer rates as low as it will allow. MJBA also continues to stay in compliance with the Chesapeake Bay Regulations which may, in future plans, raise these rates. MJBA and its staff continue to maintain accurate service for its service district, which includes Mount Joy Borough, portions of Mount Joy Township, East Donegal Township and Rapho Township.

Water: \$51.20 / first 8,000 gallons used each quarter (minimum 0-8,000)

Sewer: \$65.12 / first 8,000 gallons used each quarter (minimum 0-8,000)

- \$6.40 is applied to each 1,000 gallons over the 8,000 gallon minimum for water, but only up to 30,000 gallons, then the rates change.
- \$8.14 is applied to each 1,000 gallons over the 8,000 gallon minimum for sewer, but only up to 30,000 gallons, then the rates change.

A minimum charge bill for 8,000 gallons or less would be \$116.32.

Eight Things Your Local Burglar Won't Tell You

1. You're justly proud of your rhododendrons and other thick shrubs that lend curb appeal. Unfortunately, lush hedges can provide cover for a burglar jimmying his way in. Nearby trees, too, can be used by a second-story man if the branches abut your windows. Keep vegetation trimmed low, and consider installing thorny plants close to the house to thwart thieves.
2. A mirror in the entryway lets you assess your look before heading out the door. But check its position from your front windows. Can you see the reflection of your alarm system? If so, would-be intruders can too—and they'll know at a glance if you neglected to arm it when you dashed out on an errand.
3. Here's another entryway no-no: that bowl or basket where everyone tosses keys, wallets, phones, and the like. Sure, you'll know where they are—but so will a burglar. The best place for car keys is beside your bed. If you wake up to noises that sound like someone breaking in, hit the alarm on the fob to scare the scoundrel away.
4. No one likes to get locked out, but a spare key stashed under a rock or above the door frame is bound to be discovered. Even the dumbest bad guy learns where homeowners store that extra set, so exchange yours with a neighbor you trust in case of emergency.
5. You might keep the deadbolt locked on the front door at all times, but what about the back door off the patio? Or maybe you leave the garage door wide open during the afternoons? Be as conscientious about your less-used entrances as you are with your main one.
6. You think hiding valuables among your unmentionables is a good idea—and so do thieves. Ditto for your nightstand and underneath the mattress. Smarter stashing places for jewelry, cash, and other small precious items include the attic, basement, kids' rooms, kitchen pantry, or even the broom closet.
7. To keep on enjoying that brand-new flat-screen TV, computer, or gaming system, discard the packaging properly. Cut it up into small sections, and stack the pieces to obscure what came inside from passersby. Better yet, keep cut-up cartons in a covered bin or inside the house until the morning of recycling pickup.
8. When you're out of town, you have a neighbor pick up your mail and you stop newspaper delivery so thieves won't see them piling up—but then you blab your far-off whereabouts all over social media! All a burglar has to do is look up your address, then leisurely help himself, knowing you won't be back from Cancun till Sunday. And when it comes to geo-tracking apps like Foursquare and Glympse, share your comings and goings only with people you trust.



Old Prescription Disposal

CVS Pharmacy provided us with a drop box for unwanted medication. The box is located inside the front lobby and is accessible anytime the Borough Offices are open to the public. Instructions are posted on top of the box, and clear plastic baggies are provided for depositing medications. **Medications MUST be dumped out of the original prescription bottle and put into one of these bags. They may be mixed together with other medications. NO liquids, ointments or creams. Pills and capsules ONLY.**





timbers Tree Service

Tim Leibfried / Timbers Tree Service donated 9 trees this year and planted them in various Parks. The trees in the picture are Royal Red Maples (4) and were planted at Grandview Park. This year and the last couple of years Tim has donated and planted various types of trees in Memorial Park and Little Chiques Park. These trees are fairly large and are in good shape. Sometimes older trees that are dead or dying need to be removed. The number of new trees planted outnumber the trees that have been removed. Thanks to Timbers tree Service, this is made possible.



Rick Hallgren

"The Name You Know... for Real Estate!"™

65C E. Main Street
Mount Joy, PA 17552
Office: **653-2646 x103**
Cell: 940-0995, Fax: 653-2850
E-mail: rhallgren@homesale.com
Web site: www.RickHallgren.com



The Reserve at Union School Last Phase Now Open!!!

1/3 to 3/4 Acre Homesites, One or Two Story Homes, 1st Floor Master Bedrooms also available, 3+ Bedrooms, 2 or 3 Car Garages, 1,700 to 3,200+ Square Feet,
Open & Spacious Home Designs. Heartland Builders, Inc.



www.RickHallgren.com

"Delivering the Very Best of Continuing Real Estate Service."



114 Lakeside Crossing,

3BR, 2.5BA, 1431 SF Like new affordable 2 story home. 1st floor laundry, spacious and open daylight -walkout basement.

\$ 207,900

345 S. Market Ave..

Beautiful 3BR,2BA,1406 SF Home. HW floors, remolded kitchen, nice sunroom and finished basement with fireplace.

\$ 219,900



1645 Grandview Rd

3BR,3BA 3525 SF. beautiful home sits on 6.70 acres w-gorgeous views for miles. Open foyer, lofted ceilings, large kitchen island, radiant floor heat & so much more!!

\$ 529,900

Mount Joy Athletic Association



Mountjoyaa.com

NISSLEY FUNERAL HOME, LTD



Andrew F. Reymer, Supervisor
228 E. Main Street,
Mount Joy, PA 17552
(717) 653-1151

Traditional Service \$3,895
Cremation \$1,195

Borough Office Holiday Schedule

Thanksgiving

November 26-27, 2015

Christmas

December 25, 2015

New Year's Day

January 1, 2016

Presidents Day

February 15, 2016

Good Friday

March 25, 2016

Memorial Day

May 30, 2016

Independence Day

July 4, 2016

Labor Day

September 5, 2016

Thanksgiving

November 24 & 25, 2016

Christmas

December 26, 2016

Closed...

Lancaster County Prescription Drug Discount Cards Continue to Offer Great Savings to County Residents

Lancaster County residents have saved more than 2.2 million dollars on more than 100,000 prescription medications with the Lancaster County Prescription Drug Discount Card Program—a program offered by the Lancaster County Board of Commissioners.

The cards are FREE and there are no eligibility requirements, enrollment forms, or membership fees to use the program. Simply pick up a card and take it to a participating pharmacy to receive a discounted rate on prescription medications that are not covered by a health insurance plan. One card can even be used for the whole family!

We are happy to make the Lancaster County Prescription Discount Cards available to you at Mount Joy Borough Office, 21 East Main Street, Mount Joy. Please stop in to pick one up.

For additional information about the program or to find a participating pharmacy near you, please visit www.caremark.com/naco, www.co.lancaster.pa.us, or call toll free 1-877-321-2652. You may also contact the County Commissioners' Office at 299-8300.

This program is available through the Commissioners' partnership with the National Association of Counties (NACo) and is administered by Caremark.



Discover Our Downtown

4TH FRIDAY

Downtown Mount Joy

Explore Downtown

5-8 p.m.

**Every Fourth Friday
of the Month**

**Become a
Hometown Hero**

Ask about volunteer
opportunities with
Main Street Mount Joy
717.653.4227



**MOUNT JOY
2015**

**Saturday
December 5
4-7 p.m.**



Find a complete list of events at www.msmj.org

CAR-- RT SORT
POSTAL CUSTOMER LOCAL

The Mount Joy Messenger is distributed through bulk mailing. Therefore, it is received by a few residents of surrounding municipalities.

Borough Office Hours
Monday-Friday 7 AM - 4 PM

2015 Meeting Schedule

(All meetings are open to the public.)

- Borough Council meets the first Monday of each month at 7 PM except November 2 at 6 PM.
- Borough Authority meets the first and third Tuesday of each month at 4 PM.
- Borough Planning Commission meets the second Wednesday of each month at 7 PM.
- Council Public Works Committee meets the second Monday of each month at 6:30 PM.
- Council Administration and Finance Committee meets the fourth Wednesday of each month at 6:30 PM except November 18.
- Council Public Safety Committee meets the fourth Monday of each month at 6 PM.
- Zoning Hearing Board meets the fourth Thursday of each month at 7 PM except November 19 and December 17.
- Borough Authority Finance Committee meets November 5 at 10 AM.
- Borough Authority Administration Committee will meet October 27 at 10 AM.

Borough Officials

Timothy Bradley, Jr., Mayor
Dale Murray, Councilor (West Ward)
Charles Glessner, President (East Ward)
Chris Metzler, Councilor (East Ward)
Joshua Deering, Vice President (East Ward)
Mike Reese, Councilor (West Ward)
Brian Youngerman, Councilor (Florin Ward)
Barry Mowrer, Councilor (Florin Ward)
Hans Seidel, Councilor (Florin Ward)
Vacant, President Pro-Tem (West Ward)

Scott M. Hershey Borough Manager/Secretary
Stacie Gibbs, Code Enforcement Officer
Dennis Nissley, Public Works Director

Borough Authority Members

Kenneth Gainer, Chairman
John Weidman, Vice-Chairman
Robert Golicher, Assistant Secretary/Treasurer
Larry Derr, Treasurer
John D. Rebman, Secretary

John Leaman, Authority Administrator/Manager
Joe Ardini, Operations Manager/Superintendent

(You may contact the borough office at 653-2300 at any time to leave a message for a Borough Official or an Authority Board Member.)

This newsletter was published by Lindsey Edgell at the Mount Joy Borough Office. If anyone has any questions, comments, or suggestions, e-mail her at Lindsey@mountjoy.pa.org. Also, anyone looking to advertise their local business in the next edition of the Messenger, please call 653-2300 or e-mail at the address listed above.

Please note that as of 1/1/14 the Borough/Authority has a new host for their website. Please do not use an old link or favorite, just type in www.mountjoyborough.com in the browser and you will be directed to the new site.

The Mount Joy Messenger is published by the Borough of Mount Joy and Mount Joy Borough Authority to provide information to the community concerning the Borough, the Authority, and nonprofit, nonpolitical organizations providing services in the community or working for the betterment of the community which do not limit their services on the basis of race, sex, religious affiliation, national origin or other similar classification. Nonprofit, nonpolitical organizations which provide services to residents of the community on nondiscriminatory basis or which promote the betterment of the community are permitted to submit articles describing their organization and services for inclusion in the Mount Joy Messenger. The inclusion of an article does not constitute an endorsement of the organization or philosophy stated in such article, and the Borough and the Authority make no representation as to the quality of the services of any organization. The Borough and the Authority reserve the right to reject any article submitted by any organization which does not provide services within the community, which is political in nature, which does not relate to services provided on a nondiscriminatory basis, which does not promote the betterment of the community or which limits its services on the basis of race, sex, religious affiliation, national origin or similar classification.