



Mount Joy Messenger

www.mountjoyborough.com

A Great Place to Live, Work and Play!

Fall & Winter 2018-2019

Now Available: Online Bill Pay

**Pay your water/sewer & trash bill online at:
WWW.MOUNTJOYBOROUGH.COM**

Have you heard?
Recycling has changed in Lancaster County.



JUST FOCUS ON THE **BIG 4** & PLACE ONLY THESE ITEMS IN YOUR BIN.

1



CORRUGATED
CARDBOARD

Flattened

2



PLASTIC BOTTLES
& JUGS WITH NECKS

3



METAL FOOD &
BEVERAGE CANS

4



GLASS JARS
& BOTTLES

Emptied, Rinsed, & Lids Removed

All other items do not belong in your recycling bin.



It's okay to throw *everything else* away. It will be turned into energy.

Lancaster County has an advanced waste-to-energy process that converts these materials into renewable energy, powering local homes and businesses and helping to reduce our reliance on non-renewable sources of energy.

So, when in doubt, throw it out.

recyclerightlancaster.org



Trash Collection Procedures & Guidelines

Reference map on page 3 to know what day your trash will be collected.

Monday– East Ward, Tuesday– West Ward, Wednesday– Florin Ward



Collection can begin as early as 5 AM on your assigned pickup day. Basic service includes three (3) 32-gallon refuse bags/cans. Each bag/can is limited to 30 pounds. Customers are asked to place trash/recycling containers at your pickup site the evening before your assigned day and should be removed promptly after 6 PM. If your trash is missed, please do not remove it from your pickup site. Call the Borough Office before 11 AM the next day at (717) 653-2300 and arrangements will be made to have it picked up.

Special Tags

- **ORANGE (Extra Bag Tag) \$1.50 Each-** For additional 32-gallon bags or cans, not weighing more than 30 pounds each.
- **RED (Oversized Items) \$4 Each-** For refuse that will not fit into refuse containers. (ex. Small furniture, carpet, and like items). **Limit of two per week.** Covered devices (ex. TV's and Computers) no longer accepted.
- **KRAFT BAGS (Yard Waste excluding grass) \$0.50 Each-** For Woody Waste only. Kraft Bags (trimmings and shrubbery) shall not weigh more than 30 pounds. **(Reference page 4 for the collection schedule.)**

Trash Collection Delays

On each of these holidays trash collection will be behind one day. Normal Monday collection will take place Tuesday, Tuesday collection will take place Wednesday and Wednesday collection will take place Thursday.

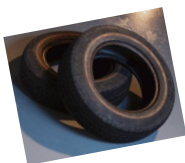
Christmas, Tuesday, December 25 (Monday Normal, Tuesday and Wednesday Delayed)

New Years Day, Tuesday, January 1 (Monday Normal, Tuesday and Wednesday Delayed)

White Goods & Tires

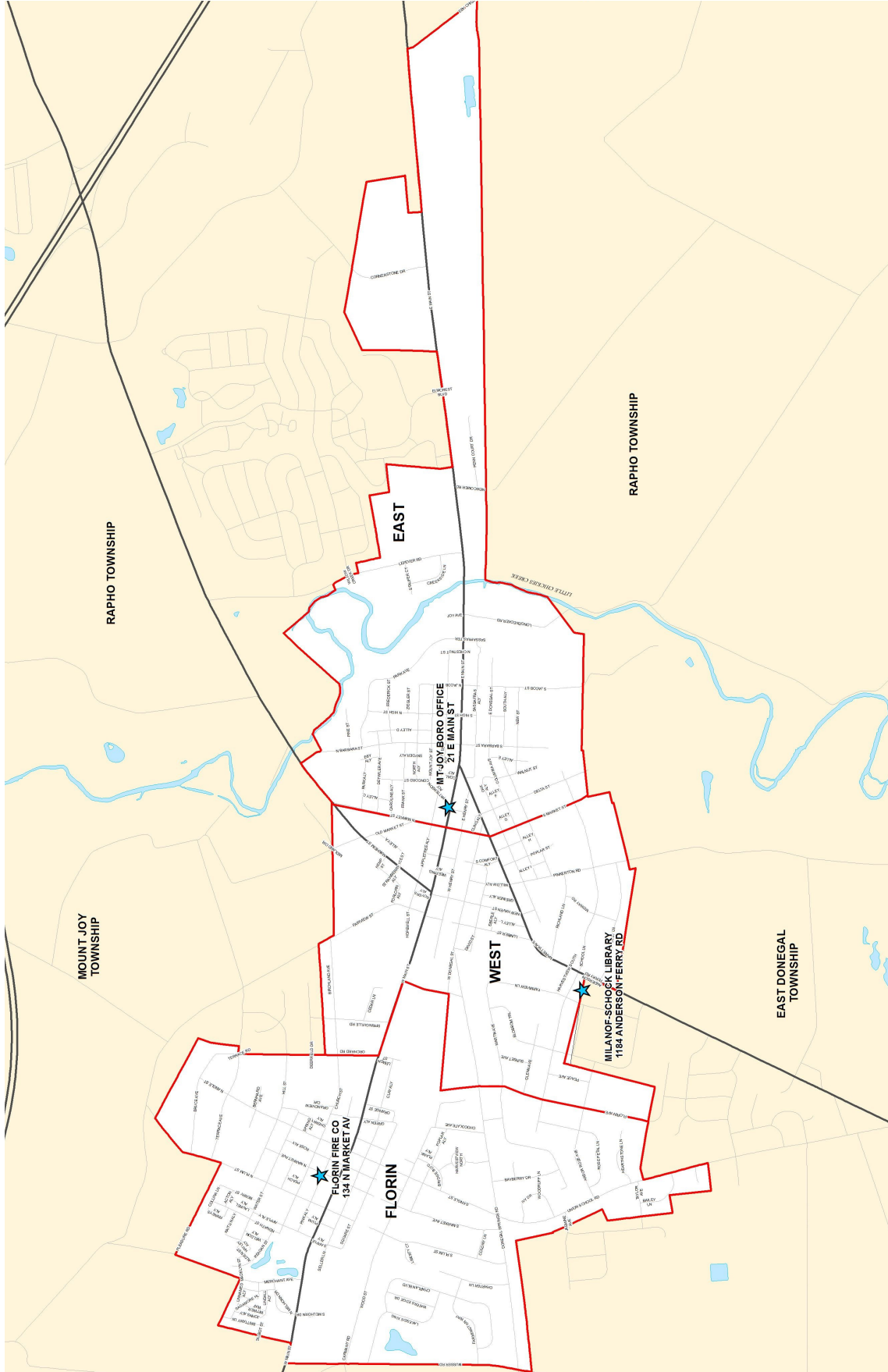
**Collected During the Week of October 22
on Your Regular Trash Collection Day!**

- **White Goods \$12-** Refrigerators, Washers, Dryers, Stoves, Air Conditioners, Dishwashers, Freezers, Hot Water Heaters, Dehumidifiers, Furnaces, Microwaves, etc. (APPLIANCES ONLY!)
- **Tires \$2-** May be on or off the rim.

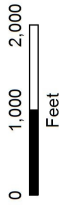


**YOU MUST HAVE A TAG ON YOUR ITEM IN
ORDER FOR IT TO BE COLLECTED!**

Residents are asked to place these items at their regular trash collection site on the evening before pickup. A special tag must be placed on each item to be disposed of. Tags may be purchased at the Borough Office, M-F, 7 AM-4 PM, or at the Milanof-Schock Library, 1184 Anderson Ferry Road, during their hours of operation. Tags **MUST** be purchased no later than 2 PM the day before your collection.



Mount Joy Borough Polling Locations 2016



Source: Lancaster County GIS. Copyright (c) 2012.
This map is to be used for reference or illustrative purposes only.
This map is not a legally recorded plan, survey, or engineering
cchematic and it is not intended to be used as such.
For complete disclaimer see <http://www.co.lancaster.pa.us/gisdisclaimer>.

COMPOST SITE

MOUNT JOY BORO/EAST DONEGAL TOWNSHIP FACILITY REGULATIONS:

- The site accepts yard waste materials (sticks, branches, etc.).
- The following items will **not** be accepted: grass clippings, tree branches/trunks over 19" in diameter and/or over 8' in length, tree stumps, construction/demolition waste (boards, etc.).
- Yard waste is not required to be bagged, but if you prefer to do so, Kraft Bags can be purchased at the Borough Office at 21 East Main Street, Mount Joy, or at the Milanof-Schock Library, 1184 Anderson Ferry Road, Mount Joy.

Hours & Directions

From East Main St., turn onto S. Barbara St., make a left onto E. Donegal St., then a right onto S. Jacob St. Follow S. Jacob St. until you can go no further. Arrive at the Compost Facility.

The Mount Joy Borough/East Donegal Township facility will now be open every Friday from 3-6 PM and every Saturday from 9 AM-12 PM and will end on November 17 until the site opens again in spring of 2019.

Woody Waste Pickup Schedule

Yard waste collection will take place on your regular collection day during the following weeks:

**September 24, 25, 26
October 8, 9, 10, 22, 23, 24
November 5, 6, 7**

2018 Leaf Collection

Leaf Collection will start November 5 and run through December 7 in the Borough. The following guidelines are to be followed for those participating in the pickup.

- Leaves must be raked into piles at the edge of the street or alley in plain view and far enough away from parked vehicles. The Public Works Department is not permitted to go onto anyone's property to collect leaves.
- Remove large sticks, branches, metal, lumber, rocks and/or plastic objects from leaf pile. Such items may cause damage to the equipment or employees and cause a delay in collection.
- If leaves piled by the curb have not been picked up within one week, please call the Borough Office at 717-653-2300 and leave your name and address as a reminder.
- Please do NOT bag leaves.



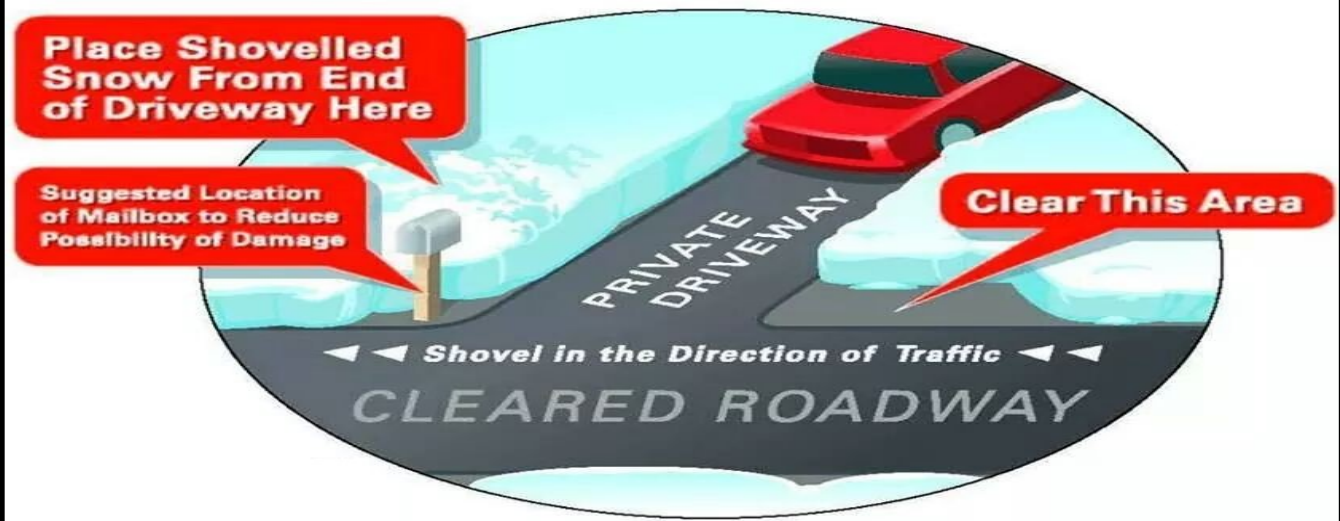
PUBLIC WORKS

▶ REPORT A CONCERN

You can now easily report Public Works concerns, including potholes, sinkholes and debris by using Mount Joy Borough's online reporting tool. Simply visit www.mountjoyborough.com, highlight the Public Works tab, and then select the Report a Public Works Concern

Avoid the "Second Shovel"

After a snowstorm, how many times have you shoveled your driveway only to have it plowed in when your local snowplow comes through? Clearing an area to the right of your driveway (as seen in the diagram below), giving the snow on the plow a place to go other than your driveway, should keep you from having to do the same job twice.



Snow and Ice Removal

Snow and ice are to be removed from all sidewalks in front of or along-side properties within 24 hours after such snow and ice has stopped. There shall be a clear walk which must be at least 3' wide along the entire length of the sidewalk. In the event the snow and ice becomes so hard it cannot be removed, sand or another abrasive can be placed upon the sidewalk to make travel reasonably safe and, as weather permits, proceed to clear a path.



An accumulation of snow and ice on a building or any other structure which is liable to fall on any sidewalk, roadway or other public way must be removed within a reasonable time, but no later than 24 hours after the cessation of any fall of snow, sleet or freezing rain.

Snow and ice shall also be removed surrounding a fire hydrant, and no snow shall be deposited immediately next to a fire hydrant, or on any sidewalk, travel lane of a street or loading or unloading area of public transportation system.



STORMWATER TIPS FOR FALL

Too Many Leaves?...Use them to your advantage!!!

- **Insulate Tender Plants:** A 6-inch blanket of leaves protects tender plants from winter wind and cold. Cover cold-hardy vegetables—such as carrots, kale, leeks and beets—and you'll be able to harvest them all winter.
- **Boost Your Compost Pile:** Carbon-rich leaves balance high-nitrogen compost ingredients such as fresh grass clippings.
- **Improve Your Soil:** Mix shredded leaves right into your garden. Next spring, your soil will be teeming with earthworms and other beneficial organisms.
- **Make "Leaf Mold":** Simply rake the leaves into a big pile. If you shred them, they will decompose faster, but you can still make leaf mold without shredding. After one to three years, fungus will have broken the leaves down to a special compost that smells like a walk through the woods. Leaf mold is high in calcium and magnesium and retains three to five times its weight in water—rivaling peat moss.

Think Before You Shred

- Be careful with some kinds of leaves. Walnut, eucalyptus and camphor laurel leaves contain substances that inhibit plant growth. It's best to compost these leaves before using them in your garden.
- Be sure to chop or shred leaves before using them as mulch. Whole leaves can form a mat that water can't penetrate.
- If you add shredded leaves right to the soil, add some slow-release nitrogen fertilizers to help the leaves decompose and to ensure that soil microbes don't use all of the available nitrogen.

It is that time of year again- fall is here! Mount Joy Borough would like to remind you of the importance of preventing stormwater pollution while you make the most of the fall season.

Stormwater is formed when rainwater makes its way into storm drains or runs off our properties directly into streams. On its journey to the stream, stormwater can pick up harmful substances that pollute our watershed.

PLEASE KEEP DRAINS CLEAN



Cardboard Recycling Dumpsters Available At 2 Locations

Mount Joy Borough has two cardboard **ONLY** recycling dumpsters at the Parks Department Building, 134 North Market Avenue and two cardboard ONLY recycling dumpsters located in the parking lot of Little Chiques Park on Park Avenue. There is a slot in each dumpster that you can just slide the cardboard through. If anyone has any questions or comments, please call the Borough Office at (717) 653-2300.

How to Prepare For A Winter Storm EMERGENCY

General Guidelines:

- Get an emergency supply kit that includes enough provisions for you and your family to live on for a minimum of three days.
- Adequate clothing and blankets to keep you and your family warm.
- Make an emergency plan for you and your family.
- Listen to your radio, television, or NOAA Weather Radio for weather reports and emergency information.
- Make sure your home is well insulated and that you have weather stripping around your doors and windowsills to keep the warm air inside.
- If you have no heat, close off unneeded rooms, stuff towels or rags in the cracks under doors and cover windows at night.
- Cover pipes with insulation or newspapers and plastic. Allow faucets to drip a little during cold weather to avoid freezing.
- Learn how to shut off water valves in case a pipe bursts. If the pipes freeze, remove any insulation or layers of newspapers and wrap pipes in rags.
- Completely open all faucets and pour hot water over the pipes, starting where they were most exposed to the cold (or where the cold was most likely to penetrate).
- Use extreme caution when using alternative heating sources. Refuel kerosene heaters outside and keep them at least three feet from flammable objects. Also, when using kerosene heaters be sure to maintain ventilation to avoid build-up of toxic fumes.

Any questions or for future information reach out to Mount Joy Borough Emergency Management @ ema@mountjoy.org.

Be Safe, Matthew Kratz - EMA Coordinator

Greetings from the Mount Joy Area Historical Society!

The Mount Joy Area Historical Society has had a busy 2018, and we still have 2 more programs scheduled for October and November. We invite everyone in the community to visit our museum and enjoy the presentations by history experts, as well as observing our progress on the Cemetery Road Schoolhouse project. Much more to come on the schoolhouse in the spring of 2019!!

Programs planned for October and November are:

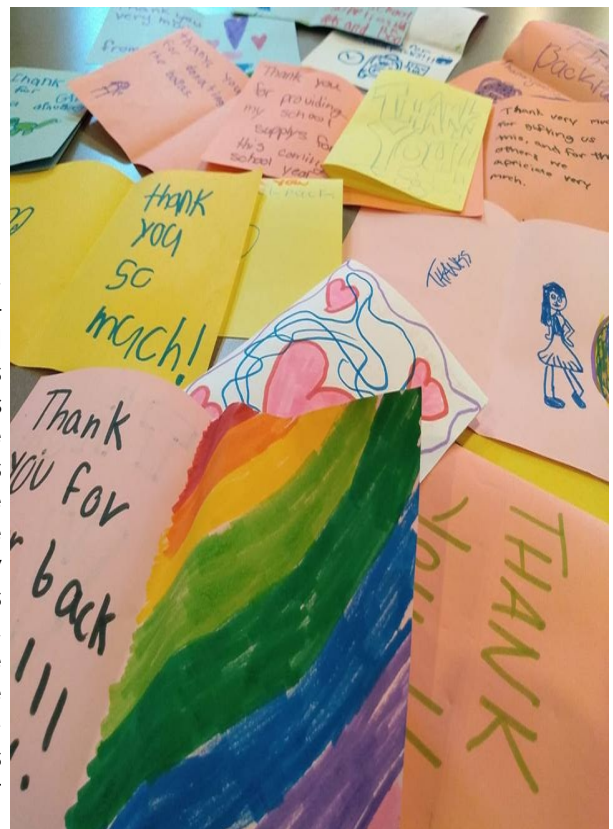
- Monday, October 15th, Michael Showalter from the Ephrata Cloister will present "Melancholy and Macabre Stories from Lancaster County," a good topic for spooky old October heading towards the end of the year.
- Monday, November 19th, our last program of 2018 will be presented by Robert Kinsey, who will provide a power point presentation on "Grist Mills in Northwest Lancaster County." He will discuss how water-powered grist mills were constructed and how they operated. A visual tour of the standing grist mills in Northwest Lancaster County is part of the presentation.

All programs begin at 7 PM, following a short business meeting, and are free and open to the general public. Refreshments are provided at the end of the program. **Parking is available at the Rainbow's End parking lot and the east end of the Lions Club Swimming Pool parking area.**

For additional information, to become a member, or to purchase any of our journals, please visit our website at www.mountjoyhistory.com or stop by the museum any Sunday afternoon between 1 – 4 PM. Thank you for supporting the Mount Joy Area Historical Society!



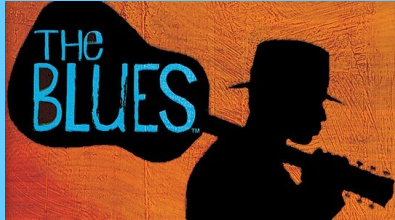
The REYS Youth Center backpack drive started with one student helping get a single backpack for a friend. Over the last five years, this has blossomed into a program giving out over 600 backpacks filled with school supplies each year! The rising cost of school supplies and backpacks often makes it hard for some families to be ready for each upcoming school year. With the help of the community REYS was able to help students start the school year strong by providing them with the necessary supplies to excel in school. Below is a picture of thank you cards the children have written to show how happy they are to have a backpack for this school year. Students, parents, social workers, teachers, and many others are so excited to see a program like this available to the community. The enthusiasm of the children has been a beautiful thing to see. If you are interested in helping with this program or many others like it go to reys.org to see everything that is offered at the youth center.



Blues, Brews & BBQS

Friday, September 28, 5 - 8 PM

Come downtown to buy something Blue, listen to the Blues, drink some Brews and eat some BBQ! Walk along Main Street from place to place and spend some time getting to know your local business community.



Cosplay Invasion

Friday, October 19

5 - 8 PM

Come dressed in family-friendly Cosplay! Come out to watch everyone else dressed in Cosplay! Look for photo opportunities and group photo spots. Business specials downtown!



Downtown Trick-or-Treat

Friday, October 26, 5 - 8 PM



Bring the kids downtown and trick-or-treat at our local businesses! Participate in some local activities and have fun!

Winterfest

Saturday, December 1, 4 - 7 PM

Come out and kick off the holiday season the only way Mount Joy can! This is the 21st year for Winterfest. Listen to some local music, walk around Main Street and dine on your favorite food!

January 14-15-16

Place your holiday trees curbside where you place your normal trash during the week of January 14-15-16. If your tree is not collected on your normal collection day during this week, please call the Borough Office, 717-653-2300, so we can get it collected. **Please DO NOT put trees in bags or wrap in plastic.**



CHRISTMAS TREE PICK-UP



All services are free and confidential.

If you need help, please contact us.
Donegal Substance Abuse Alliance
15A West Main Street, Mount Joy
Phone: 717-492-4596

Hours: Mon. & Fri. 10-2, Wed. 12-6, or by appointment

Email: Dsasquared@gmail.com

Website: Dsasquared.org

Facebook: <https://www.facebook.com/DonegalSubstanceAbuseAlliance/>

When someone is struggling with addiction, they are not the only ones affected. Addiction impacts the whole family; parents, children, significant others. It can tear a family apart. There may be feelings of guilt, helplessness and isolation. But now more than ever, it doesn't have to be that way.

Where do you turn when you have a loved one struggling with addiction? Who can you talk to? How do you help them get into treatment? How do you best support them when they come home? Navigating the system when you don't have any experience is tough.

DSAA has a Certified Family Recovery Specialist on staff and we offer services to families struggling with addiction. We offer help finding treatment, support groups for families, CRAFT sessions (Community Reinforcement Approach and Family Training), SMART (Self-Management and Recovery Training) meetings, SMART Friends and Family meetings, Narcan training and free kits (while supplies last), and educational information about addiction for all ages.



Ferne Silberman – 717.575.8626

The Ferne Silberman Team

The Local Experts

Working for the community



Cell: 717.575.8626
E-mail: fernesilberman@comcast.net
www.fernesilberman.com

Office: 717.653-2646

102 E. Main St.
Mount Joy, PA 17552



BERKSHIRE HATHAWAY | Homesale Realty
HomeServices



Ferne Silberman Team Members



Keith Greenawalt
717.368.6881



Rose Madar
717.475.3885

30 years EXPERIENCE in the local marketplace

Excellent Communicator

**Returns phone calls/
correspondence promptly**

**NEW
LOCATION!**

**102 E. Main St
Mount Joy PA 17552**

An Independently Owned and Operated Broker
Member of BHHS

Licensed in the State of PA
License # AB068142



102 Meadowbrook Lane, Elizabethtown

Amazing 4/5 Bedrooms, 4 Full Baths Ranch Home. Family Room, Formal Living and Dining Rooms, 2-Car Garage, Greenhouse, all on 1.3 Acre Lot.



**NEW
PRICE**

362 Hereford Road, Elizabethtown • \$774,900

5 Bedrooms, 3 1/2 Baths 1.25 acre in Agricultural Zoning.

Incredible home, with 3 bay garage, detached 2 story barn. Too many features to list.



1346 Heatherwood Dr., Mount Joy
One Floor Living - 3 Bedrooms, 2 Full Baths,
Screened Porch - 2 car garage - Great Location

Trick-Or-Treat

Wednesday, October 31

6 - 8 PM



Since 1899

Sheetz

FUNERAL HOME, INC.

Honored to Serve Our Community

Jonathan R. Sheetz

Supervisor

Andrew D. Dieck

Licensed Director

16 East Main Street, Mount Joy, Pennsylvania



Kim Sutter Eckels

'YOUR HOMETOWN REALTOR'

Realtor, Notary, Seniors Real Estate Specialist

Keller Williams Realty

1280 Plaza Blvd

Lancaster, PA 17601

Office Phone: (717) 553-2500

Cell: (717) 575-8289

kimsuttereckels@gmail.com

AVAILABLE 24/7

SELL NOW! DON'T WAIT, BUYERS ARE READY!!



- DVD's (Movies, Series, How-to, etc.)
- E-Books
- Programs
- Museum Passes
- Passport Services
- Audio Books
- Music
- Magazines
- Early Learning Resources
- And Books!!

Did you know a Library Card is FREE? Yup...free! Sign-ups are easy with proof of a local address, and it only takes a few minutes to have access to thousands of books, movies, audio books and early learning resources – for free! On a budget but want to read new releases? Save yourself the \$25+ and check one out at the Library. Do you love movies but don't want to spend \$40+ for the family to go to the theatre? We offer lots of films shortly after they are released to DVD – \$1 rental for a week (all other DVDs can be checked out for free).

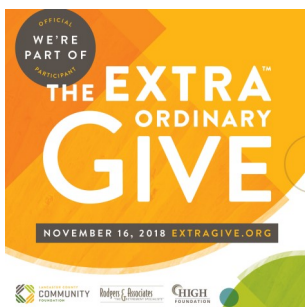
Here's what's happening at the Library this Fall!

• **LAURA INGALLS WILDER DISPLAY** - We will be hosting a display during the month of October that highlights Laura Ingalls Wilder, author of the Little House Books, and westward expansion. The display will be on loan from the Laura Ingalls Wilder Museum in Missouri and will be set up in the "Quiet Reading Area" of the Library. Please check the Library's website and Facebook page closer to October for special programming to coincide with the display.

• **PORK BBQ FUNDRAISER** – What a Delicious Fundraiser! Meals for Milanof-Schock Library's PORK BBQ FUNDRAISER come from Harvey's BBQ. \$10/meal includes: Juicy Pulled Pork Sandwich, Cole Slaw, Baked Beans, & Dessert. The event will be sponsored by Nolt Electric. Tickets will be available at the Library in late September.



• **THE FRIENDS GIFT, BOOK & BAKE SALE** – The Friends Group of the Milanof-Schock Library will have their annual Holiday Sale at the Library Nov. 15, 10 AM—8PM; Nov. 16, 10 AM—5PM; Nov. 17, 9AM—4 PM. The Friends will offer: Fine Regiftables; Locally Hand-Crafted Items; 18" Doll Clothing, Accessories and Furniture; Christmas Decorations; Holiday Books; Baked goods. This is a great opportunity to do some early shopping for teachers, moms, grandparents, or yourself! Free punch & cookies are offered for shoppers. All proceeds benefit the library!



• **THE EXTRAGIVE** – The Library will be participating in the EXTRAGIVE again this year, and we hope we can count on your support of the Milanof-Schock Library. This is a tremendous opportunity to unite our community around causes in which we truly believe and help nonprofit organizations – like our Library! - connect to the larger community. Make sure to mark your calendars – Friday, November 16 - for this 24-hours of giving!

The Library's monthly calendar is loaded with programs for community members of all ages: Bingo, preschool science, home school art class, Lego Club, Fun Fort Friday, Teen Anime and weekly story times! Join our Adult Game Night, one of our 2 book clubs, a writing circle, painting class, our knitting group or needle felting club! Once a month you can attend a program geared toward lifelong learning, and we schedule special programs for adults every month as well.

Make sure to find us on Facebook and Instagram to get the latest library updates and other posts relating to books and reading!





62 East Main Street, Suite 1
 Hours: Tuesday-Friday 10 AM—4 PM
 Phone: (717) 653-0773
 Fax: (717) 928-4789
 Email: kerry@mountjoychamber.com
 Website: www.mountjoychamber.com



Santa Claus is Coming to Mount Joy

The Mount Joy Chamber of Commerce will once again be hosting Santa Claus for the local children to visit. Santa will be at Pies Galore & More, 76 E. Main Street, Mount Joy on Saturdays November 24 and December 8 from 12—3 PM.

The Chamber and Santa will be accepting donations of nonperishable food items for the Mount Joy Food Bank. There will be cookies, hot chocolate, punch and candy canes along with coloring pages for the kids. They will be able to display their artwork again this year in Pies Galore windows for everyone to enjoy!! Parents will be able to put their name in a drawing for a Mount Joy Money Gift Certificate giveaway. Don't forget your cameras!!



Mount Joy Money Gift Certificates

Need a gift Idea? Why not stop in the Mount Joy Chamber of Commerce, 62 E. Main Street, Suite 1 and purchase Mount Joy Money Gift Certificates keeping dollars in Mount Joy! These gift certificates can be used at more than 40 Chamber members businesses! They can be used for lodging, dining, shopping and services at Mount Joy businesses. When you purchase Mount Joy Money Gift Certificates you will also receive a brochure as to where you can use the certificates!! The gift that gives back and supports our local business community! Feel free to call ahead and your gift certificates will be ready for you when you arrive.

Mount Joy Welcome Bags

Have you just moved to Mount Joy or purchased your first home? If yes, be sure to stop in the Chamber office for your Chamber Welcome Bag! More than 30 Chamber members have information in the Chamber Welcome Bags along with a Chamber Business Directory, welcome letter and so much more. The Chamber office is open Tuesday through Friday from 10 AM—4 PM, 62 E. Main Street, Suite 1, Mount Joy. www.mountjoychamber.com You can also friend us on Facebook at: <https://www.facebook.com/mountjoychamber/>



Mount Joy Minnie!

It may only be September but Ground Hog Day is just around the corner and it will soon be time to start thinking about Mount Joy's most famous ground hog, Mount Joy Minnie. You might also start to think about the crazy hat you will want to wear for her big day! Our crowd continues to grow so let's make Saturday, February 2, 2019 our largest yet! At approximately 7:14 AM Mount Joy Minnie, will make her annual appearance for this rain or shine event.

The Mount Joy Chamber of Commerce hosts Mount Joy Minnie in memory of her deceased founder Bob Myers and whose wife Sharon, is a Chamber member. We will gather at the Rotary clock between 6:45—7 AM, sunrise is approximately 7:14 AM, at which time we will awaken Minnie from her slumber to hear whether or not we have six more weeks of Winter or an early Spring. We will once again have our Crazy Hat Contest so think top hats, cowboy hats, fur hats, spring bonnets, whatever you choose and you may win a prize!

A large number of observers and a lot of noise are the key ingredients needed to wake Minnie from her hibernation, so set the alarms and come out and join us. The Walter S. Ebersole American Legion Post 185 will again be serving up hot chocolate, coffee, and snacks. In case of inclement weather, we will meet under the Union Community Bank covered parking lot.

If you would like further information about event please contact Mount Joy Chamber member Nancy Shonk at 717-989-6452 or Kerry at the Chamber at 717-653-0773. Mark your calendars now and we look forward to seeing you on Saturday, February 2, 2019.



What is Hospice Care and How Can It Help?

By Paul Gardner, Supervisor, Buch Funeral Home

Hospice care is not something most people want to talk about but it's a topic that needs to be discussed to better understand the many benefits and also dispel any misconceptions.

Hospice care is a set of specialty care services that assist individuals who have a life-limiting or terminal illness, as well as their families.

Hospice does not have to be a brick-and-mortar location where you send people. This care can be offered at a patient's home, a facility or in the hospital.

Hospice care includes many things:

- ⇒ Medical care from registered nurses trained in pain control and symptom management.
- ⇒ Personal care needs such as feeding, bathing, shaving, etc.
- ⇒ Emotional support from social workers who can help manage emotional aspects of late-stage illness.
- ⇒ Spiritual care is offered by chaplains who are professional clergy.
- ⇒ Companionship from volunteers.
- ⇒ Grief support from grief specialists who can offer one-on-one visits, phone calls and literature.

Often, when hospice is first suggested, the patient or the family is hesitant to accept it because they don't fully understand what it entails. Usually, those who do receive it say they wish they had accepted the care sooner, because they had no idea how much help it could be.

One mistaken belief is that hospice care is only for cancer patients, but this is not true. Anyone, from infants to the elderly, who are suffering from a life-limiting and/or terminal illness can benefit.

It's also important to know hospice services are covered under Medicare/Medicaid and by most private insurance carriers. If you or a loved one are facing a terminal illness diagnosis, speak to someone about how hospice care may be able to help



Buch Funeral Home Welcomes New Funeral Director

Kati Rye Becomes A Licensed Funeral Director

Manheim, PA—The Buch Family of Funeral Homes is pleased to announce that Kati Rye has earned her funeral director license. She will be working at the Manheim funeral home. Over the past year, Kati interned at Buch Funeral Home, refining her funeral director skills and assisting with the day-to-day tasks of running a funeral home.



This year, Juniper Village in Mount Joy celebrated Juniper Communities' 30th anniversary of providing seniors with the best in senior living options and promoting healthy aging through innovative senior care. Juniper Village and Juniper Communities were also named a Great Place to Work in 2018.

Juniper Communities, one of the largest seniors housing providers, announced that it has been certified as a great workplace by the independent analysts at Great Place to Work®. Additionally, Juniper Village at Mount Joy was also certified as a Great Place to Work®. With unemployment at 3.9%, the lowest in 17 years, Juniper's recognition as a workplace that offers an environment that engages and retains talent, fosters trust in senior leadership, promotes career development, and offers solid benefits and perks is especially important. Juniper ranked high in employee engagement, which measures the strength of the mental and emotional connection workers feel toward their places of occupation.

The certification process considered more than 1,000 employee surveys from across Juniper's community locations. Great Place to Work, an independent research and consulting firm, evaluated more than 60 elements of team members' experience on the job. These included employee pride in the organization's community impact, belief that their work makes a difference, and feeling their work has special meaning. Rankings are based on employees' experiences, no matter who they are or what they do.

What is particularly compelling about Juniper's results is that the company as a whole as well as every individual Juniper community location achieved certification. This is a rare achievement for businesses with multiple and geographically disparate locations. It is a first for any senior living company.

The Great Place to Work certification is a recognition of Juniper's on-going commitment to their associates. Over Juniper's 30-year history, they have implemented programs that foster associate engagement, focus on associate life-long learning, and support associates' work-life balance.

"People are the secret to our success at Juniper", said Lynne Katzmann, founder and CEO of Juniper. "Knowing that our team feels we are a Great Place to Work is a resounding vote of approval for us. We have built a culture that nurtures the spirit of life for our residents and team members and that commitment to purpose, to lifelong learning and to doing well by doing good is clearly motivating us each and every day! When you couple that mission with a commitment to a living wage, continuing education, celebration and recognition, it makes a real difference in engagement and retention."

"We applaud Juniper for seeking certification and releasing its employees' feedback," said Dr. Jacquelyn Kung, of Great Place to Work's senior care affiliate Activated Insights. "These ratings measure its capacity to earn its own employees' trust and create a great workplace for high performance."



Regulations from DEP Regarding Water Main Breaks

There is very specific protocol required by DEP (Department of Environmental Protection) when a water main break occurs. Depending on how and what type of break happens, precautionary boil notices will be put out. When you see the boil notice, there isn't necessarily a problem; we are just following DEP protocol. Please feel free to contact the Mount Joy Borough Authority at (717) 653-5938 if you see a boil notice and have any questions.



Mount Joy Borough Authority has contracted with SWIFT Reach Network to have an immediate response mechanism to alert you of any important news relative to your water/sewer service. Currently we have basic information for most property owners. You are able to access this file to add/change items, such as cell phone or other electronic devices such as e-mail. Please visit mountjoyborough.com and click on the link to the left that says "Police", then follow to the link that says "Swift 911 Emergency" to submit your information electronically. This system will also be available for use by the Borough and Police Department to alert you of emergencies.



Work Orders

Meters are read four times per year, typically in February, May, August and November. Each quarter when this is completed there are always a few meters that did not read for various reasons. When this happens this will require a work order be generated for each of those particular properties. Once a work order is created, one of the Mount Joy Borough Authority employees will come out to look at the problem and fix it. Each employee will always have proper identification on them so you can verify that they are in fact an employee of Mount Joy Borough Authority. If you ever have any questions about this please do not hesitate to call the office at (717) 653-5938.

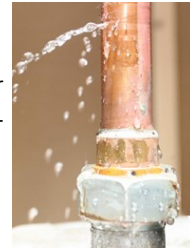


Things You Can Do To Prevent Water Waste



• Check your toilets for leaks. (Put food coloring in your toilet tank. If, without flushing, the color begins to appear in the bowl, you have a leak that should be repaired.)

- Replace older toilets with efficient water saving toilets.
- Check all faucets, pipes, hoses and couplings for leaks inside and outside of your home. (Leaks outside the house may not seem as bad because they're not as visible. They can be just as wasteful as leaks inside.)
- Rinse your razor in the sink.
- Turn off the water after you wet your toothbrush.
- Use your automatic dishwasher and washing machine only for full loads.
- If you wash dishes by hand, don't leave the water running for rinsing.
- Don't let the faucet run while cleaning vegetables.
- Keep a bottle of drinking water in the refrigerator.
- Water your lawn only when it needs it.
- Deep-soak your lawn. Water during the cool parts of the day. (Early morning is better than dusk because it helps prevent growth of fungus.)
- Plant drought-resistant trees and plants.
- Put a layer of mulch around trees and plants. (Mulch slows evaporation of moisture and discourages weed growth.)
- Don't water the gutter.
- Use a broom, not a hose, to clean driveways and sidewalks.
- Don't run the hose while washing your car.
- Tell your children not to play with the hose and sprinklers.
- Take shorter showers.
- Install water-saving showerheads or flow restrictors.
- Take baths.



Rotary Club of Mount Joy



"Where did the time go?" Just ask a local Rotarian. Find time at the corner of Main St. and Marietta Ave soon. Exactly when is a well-kept mystery! Keep your eyes on the Rotary Club of Mount Joy Facebook page to see when and how we will celebrate its return!

Given to Mount Joy Borough by the Rotary Club in honor of Mount Joy's Sesquicentennial in 2001, our town clock needed a bit of rehab and went off to visit its roots. Thanks to the many sponsors and loads of French fry enthusiasts for helping to give her a tune-up and facelift.

This is just one of the many ways the Rotary Club of Mount Joy helps the community. Support the high school booster clubs! Visit the Rotary Fry Wagon at DHS football games.

All Veterans with a guest are invited to breakfast Friday, Nov 9, at REYS, sign up required at the number below.

The club also supports the Wittle Farm Growing project, BSA Troop 39, Rotary Park, the Mount Joy Food Bank, Milanof-Schock Library, and the Donegal High School students of the month.

International and national programs include Polio Eradication, fresh water, and education for all.

Want to help your community be the best it can be? Consider joining Rotary today! Meetings are held weekly on Tuesdays at 12:15 at the Gathering Place on Pine Street in Mount Joy. The New Thursday evening meeting is held from 5:30 - 6:30 PM at Bube's Brewery.

For more details and pictures, review the Mount Joy Rotary Club's Facebook page. If you are interested in being a guest at either meeting call Mark Rorabaugh at 717-653-4717.

Lancaster County Prescription Drug Discount Cards Continue to Offer Great Savings to County Residents

Lancaster County residents have saved more than 2.2 million dollars on more than 100,000 prescription medications with the Lancaster County Prescription Drug Discount Card Program—a program offered by the Lancaster County Board of Commissioners.

The cards are FREE and there are no eligibility requirements, enrollment forms, or membership fees to use the program. Simply pick up a card and take it to a participating pharmacy to receive a discounted rate on prescription medications that are not covered by a health insurance plan. One card can even be used for the whole family!

We are happy to make the Lancaster County Prescription Discount Cards available to you at Mount Joy Borough Office, 21 East Main Street, Mount Joy. Please stop in to pick one up.

For additional information about the program or to find a participating pharmacy near you, please visit www.caremark.com/naco, www.co.lancaster.pa.us, or call toll free 1-877-321-2652. You may also contact the County Commissioners' Office at (717) 299-8300.

This program is available through the Commissioners' partnership with the National Association of Counties (NACo) and is administered by Caremark.



Thank you Donegal School Students, DEEP Program

Little Chiques Park Clean Up March 2018



Mount Joy Borough Police

Solicitation Permits Required to go door to door. Can be obtained at the Mount Joy Borough Police Department, 21 East Main Street, Mount Joy, during normal business hours. \$50/month with each additional month \$10/month up to 6 months.



Bike Helmets \$9

Reminder:



- Always keep your dog on a leash.
- Always Clean up after your dog.



POOPER SCOOPER

That would be nice, wouldn't it?

Old Prescription Disposal



CVS Pharmacy provided us with a drop box for unwanted medication. The box is located inside the front lobby and is accessible anytime the Borough Offices are open to the public. Instructions are posted on top of the box, and clear plastic baggies are provided for depositing medications.

- Medications **MUST** be dumped out of the original prescription bottle and put into a baggie (baggies are also provided at the office).
- They may be mixed together with other medications.
- NO liquids, NO ointments and NO creams.
- **Pills and capsules ONLY.**
- DO NOT put old prescriptions in the Borough Over Night Drop Box.
- Pills and Capsules in foil packs, **MUST** be removed from the packets.



Wheels For Wishes is a car donation program benefiting Make-A-Wish® Philadelphia, Northern Delaware and Susquehanna Valley. We are proud to offer an easy way to recycle or donate unwanted cars, trucks, motorcycles, SUVs, RVs, or even boats, by turning them into a wish for a local child.

Visit us for more information at:
<http://philadelphia.wheelsforwishes.org/>

Save A Warrior

22 Veterans Commit Suicide Each Day

Founded by Ronald (Jake) Clark— a 1984 Graduate of Donegal High School—Save A Warrior is a safe, innovative, and evidence based resiliency program that offers an alternative to suicide so that returning warriors may thrive.

This program has been the subject of three documentary films including CNN's "The War Comes Home: Soledad O'Brien Reports"

Please give our Warriors a few minutes of your time and visit www.saveawarrior.org and info@saveawarrior.org.



Donations Welcome:

Save A Warrior

PO Box 2416

Malibu, CA 90265

Or

Text "Warrior" to (234) 244-7283 (BIG-SAVE)

Or

Visit www.saveawarrior.org/donate

Borough Office Holiday Schedule

Thanksgiving

November 22-23, 2018

Christmas

December 25, 2018

New Year's Day

January 1, 2019

President's Day

February 18, 2019

Closed...

Mount Joy Athletic Association



Mountjoyaa.com

ECRWSS EDDM
Postal Customer

The Mount Joy Messenger is distributed through bulk mailing. Therefore, it is received by a few residents of surrounding municipalities.

Borough Office Hours
Monday-Friday 7 AM - 4 PM

2018 Meeting Schedule

(All meetings are open to the public.)

- Borough Council meets the first Monday of each month at 7 PM. The November 5 meeting will take place at 6 PM.
- Borough Authority meets the first and third Tuesday of each month at 4 PM.
- Borough Planning Commission meets the second Wednesday of each month at 7 PM.
- Council Public Works Committee meets the second Monday of each month at 6:30 PM.
- Council Administration and Finance Committee meets the fourth Thursday of each month at 6:30 PM except November 15.
- Council Public Safety Committee meets the fourth Monday of each month at 6:30 PM except December 17.
- Zoning Hearing Board meets the fourth Wednesday of each month at 7 PM except December 19.
- Borough Authority Finance Committee meets November 7 at 5 PM
- Borough Authority Administration Committee meets October 23 at 5 PM.
- Civil Service Commission meets the fourth Monday of each month as needed at 5:30 PM, except December 17.

Borough Officials

Timothy Bradley, Jr., Mayor
Charles Glessner, President (East Ward)
Mary Ginder, (West Ward)
Brian Youngerman, Vice President (Florin Ward)
William Hall, President Pro-Tem, (West Ward)
Jon Millar, Councilor (East Ward)
Joshua Deering, Councilor (East Ward)
Mike Reese, Councilor (West Ward)
Jake Smeltz, Councilor (Florin Ward)
Lu Ann Fahndrich, Councilor (Florin Ward)

Samuel Sulkosky, Borough Manager/Secretary
Maurice Williams, Chief of Police
Stacie Gibbs, Zoning/Code Enforcement Officer
David Salley, Stormwater Officer/Assistant Zoning & Code Enforcement Officer
Dennis Nissley, Public Works Director

Borough Authority Members

John D. Rebman, Chairman
John Hiestand
Larry Derr
Richard Hamm
Chris Metzler

John Leaman, Authority Administrator/Manager
Joe Ardini, Operations Manager/Superintendent

(You may contact the Borough office at (717) 653-2300 at any time to leave a message for a Borough Official or an Authority Board Member.)

This newsletter was published by Lindsey Edgell at the Mount Joy Borough Office. If anyone has any questions, comments, or suggestions, e-mail her at Lindsey@mountjoypa.org. Also, anyone looking to advertise their local business in the next edition of the Messenger, please call (717) 653-2300 or e-mail at the address listed above.

The Mount Joy Messenger is published by the Borough of Mount Joy and Mount Joy Borough Authority to provide information to the community concerning the Borough, the Authority, and nonprofit, nonpolitical organizations providing services in the community or working for the betterment of the community which do not limit their services on the basis of race, sex, religious affiliation, national origin or other similar classification. Nonprofit, nonpolitical organizations which provide services to residents of the community on nondiscriminatory basis or which promote the betterment of the community are permitted to submit articles describing their organization and services for inclusion in the Mount Joy Messenger. The inclusion of an article does not constitute an endorsement of the organization or philosophy stated in such article, and the Borough and the Authority make no representation as to the quality of the services of any organization. The Borough and the Authority reserve the right to reject any article submitted by any organization which does not provide services within the community, which is political in nature, which does not relate to services provided on a nondiscriminatory basis, which does not promote the betterment of the community or which limits its services on the basis of race, sex, religious affiliation, national origin or similar classification.