



Mount Joy Messenger

www.mountjoyborough.com

A Great Place to Live, Work and Play!

Fall/Winter 2017-2018

2017-2018 Trash Collection Delays

On each of these holidays trash collection will be behind one day. Normal Monday collection will take place Tuesday, Tuesday collection will take place Wednesday and Wednesday collection will take place Thursday.

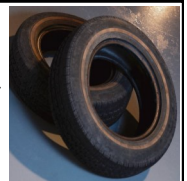
- Christmas, Monday, December 25, 2017
- New Years Day, Monday, January 1, 2018
- Memorial Day, Monday, May 28, 2018
- Independence Day, Wednesday, July 4, 2018 (**Wednesday Delay ONLY**)
- Labor Day, Monday, September 3, 2018
- Christmas, Tuesday, December 25, 2018 (**Tuesday and Wednesday Delay ONLY**)

White Goods & Tires will be Collected During the Week of October 16 on Your Regular Trash Collection Day!

- **White Goods \$12-** Refrigerators, Washers, Dryers, Stoves, Air Conditioners, Dishwashers, Freezers, Hot Water Heaters, Dehumidifiers, Furnaces, Microwaves, etc. (APPLIANCES ONLY!)
- **Tires \$2-** May be on or off the rim.



Residents are asked to place these items at their regular trash collection site on the evening before pickup. A special tag must be placed on each item to be disposed of. Tags may be purchased at the Borough Office, M-F, 7 AM-4 PM, or at the Mila-nof-Schock Library, 1184 Anderson Ferry Road, during their hours of operation. Tags **MUST** be purchased no later than 2 PM the day before your collection.



Place your holiday trees curbside where you place your normal garbage prior to Saturday, January 13, 2018. If your tree is not collected on this day, please call and leave a message at the Borough Office, 653-2300, so we can get it collected. **Please DO NOT put trees in bags or wrap in plastic.**



Holiday Tree Collection
Saturday, January 13, 2018

Trick-Or-Treat

Tuesday, October 31

6-8 PM



Mount Joy Borough Recycling Guidelines



Acceptable Items



Metal:

- Aluminum cans (beer & soda)
- Metal food cans (tin & steel)
- Empty aerosol cans & empty paint cans

Glass:

- Bottles and jars (food & drink only)

Plastic:

- #1-#7 such as soda, water, milk, juice, liquor, shampoo, detergent, condiments, salad dressing, yogurt, pet food, etc.

Paper & Cardboard:

- Cardboard boxes (MUST BE BROKEN DOWN)
- Clean Pizza boxes
- Food boxes
- Paper - Dry & Clean; Bagged or bundled (**NOT IN PLASTIC BAGS**) and placed on top of recycling bin
- Newspapers, inserts, magazines, catalogs
- Office paper, envelopes, junk mail

Mount Joy Borough

21 East Main Street
Mount Joy, PA 17552
Phone (717) 653-2300
M-F 7AM- 4PM



Batteries should also be recycled. Batteries **MUST** be placed in a special battery recycle bag. Bags are available at the Borough Office, 21 East Main Street, Mount Joy, **FREE** of charge. Place battery bags next to your recycle bin for collection.

Cardboard Recycling Dumpsters Available At 2 Locations

Mount Joy Borough has two cardboard **ONLY** recycling dumpsters at the Parks Department Building, 134 North Market Avenue and two cardboard **ONLY** recycling dumpsters located in the parking lot of Little Chiques Park on Park Avenue. There is a slot in each dumpster that you can just slide the cardboard through. If anyone has any questions or comments, please call the Borough Office at 653-2300.

UNACCEPTABLE MATERIALS

Ceramics
Dishes
Coffee Cups
Drinking glasses
Glass cookware (Pyrex, Vision Ware, etc.)
Window glass
Mirrors
Light bulbs
Plastic bags
Styrofoam containers
Packaging peanuts
Takeout containers
Plastic cups

Plastic Table Ware
Aluminum foil or foil plates
Containers of hazardous or toxic materials
Tissue or paper towels
Books
Tyvek envelopes, carbon paper
Paper cartons for milk or juice
Wax coated boxes
Toys
Coat hangers
Food Waste
Garbage

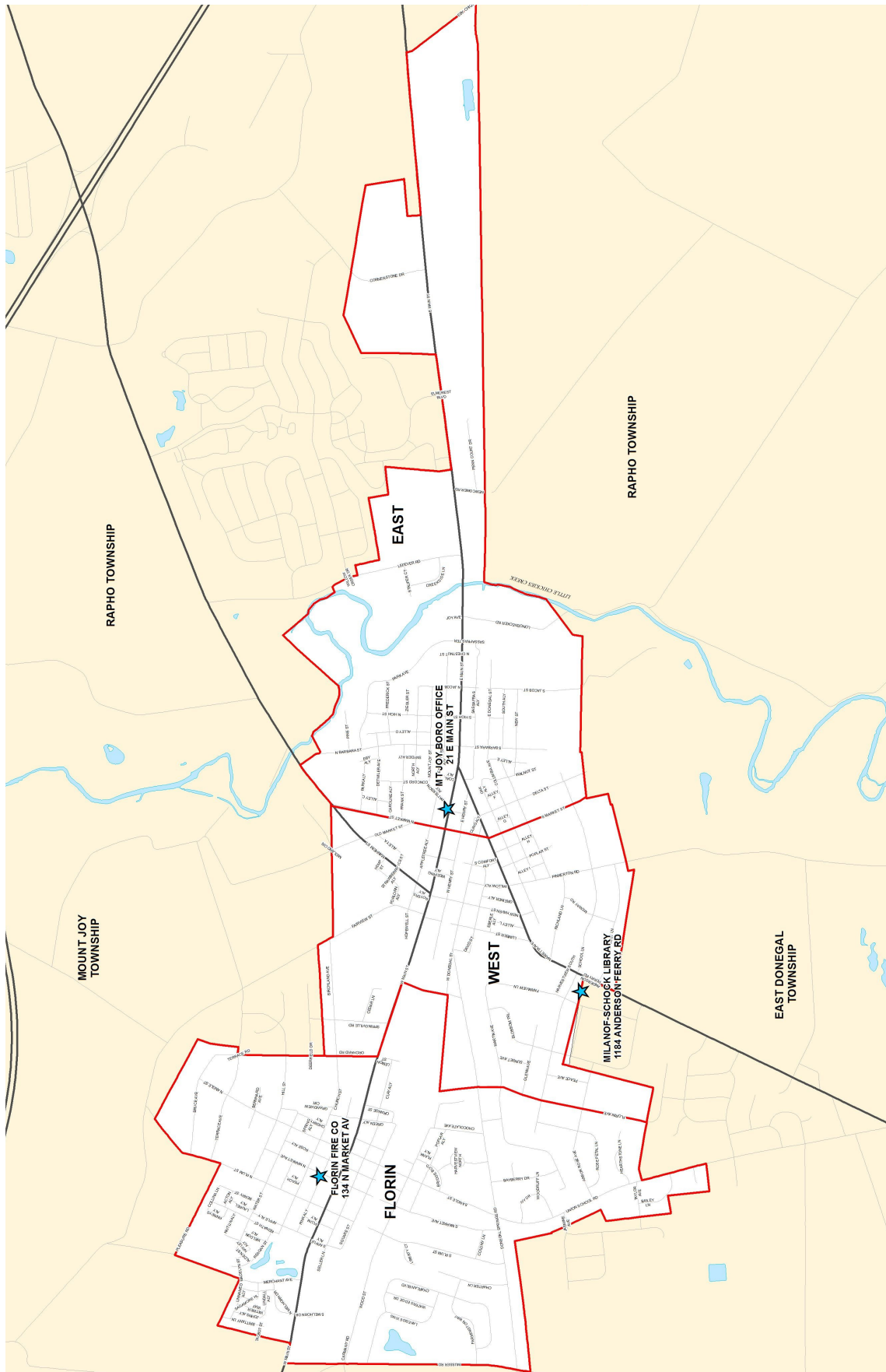
E- WASTE Materials can be disposed of for **FREE** at LCSWMA.

These items will not be picked up at the curb.

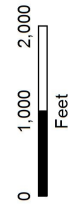
Desktop computers, laptops, monitors, keyboards, mouse, printer, speakers, televisions, e-readers, cameras, cellphones, DVD players, video game consoles, stereos etc.

Household Hazardous Waste Facility
1299 Harrisburg Pike, Lancaster, PA 17603





Mount Joy Borough Polling Locations 2016



Source: Lancaster County GIS, Copyright (c) 2012.
This map is to be used for reference or illustrative purposes only.
This map is not a legally recorded plan, survey, or engineering
cchematic and it is not intended to be used as such.
For complete disclaimer see <http://www.co.lancaster.pa.us/gis/disclaimer>.

Trash Collection Procedures & Guidelines

Reference map on page 4 to know what day your trash will be collected.

Monday– East Ward, Tuesday– West Ward, Wednesday– Florin Ward



Collection can begin as early as 5 AM on your assigned pickup day. Basic service includes three (3) 32-gallon refuse bags/cans. Each bag/can is limited to 30 pounds. Customers are asked to place trash/recycling containers at your pickup site the evening before your assigned day and should be removed promptly after 6 PM. If your trash is missed, please do not remove it from your pickup site. Call the Borough Office before 11 AM the next day at 653-2300 and arrangements will be made to have it picked up.

Special Tags

- **ORANGE (Extra Bag Tag) \$1.50 Each-** For additional 32-gallon bags or cans, not weighing more than 30 pounds each.
- **RED (Oversized Items) \$4 Each-** For refuse that will not fit into refuse containers. (ex. Small furniture, carpet, and like items). **Limit of two per week.** Covered devices (ex. TV's and Computers) no longer accepted.
- **GREEN (Grass Bag Tag) \$2 Each-** For bags of grass that need disposed of. **We strongly encourage you to recycle your grass whenever possible.**
- **KRAFT BAGS (Yard Waste excluding grass) \$0.50 Each-** For Woody Waste only. Kraft Bags (trimmings and shrubbery) shall not weigh more than 30 pounds. **(Reference page 4 for the collection schedule.)**

COMPOST SITE

MOUNT JOY BORO/EAST DONEGAL TOWNSHIP FACILITY REGULATIONS:



- The site accepts yard waste materials (sticks, branches, etc.).
- The following items will **not** be accepted: grass clippings, tree branches/trunks over 19" in diameter and/or over 8' in length, tree stumps, construction/demolition waste (boards, etc.).
- Yard waste is not required to be bagged, but if you prefer to do so, Kraft Bags can be purchased at the Borough Office at 21 East Main Street, Mount Joy, or at the Milanof-Schock Library, 1184 Anderson Ferry Road, Mount Joy.

Woody Waste Pickup Schedule

Yard waste collection will take place on your regular collection day during the following weeks:

October 2, 3, 4
October 16, 17, 18,
October 30, 31
November 1

Hours & Directions

From East Main St., turn onto S. Barbara St., make a left onto E. Donegal St., then a right onto S. Jacob St. Follow S. Jacob St. until you can go no further. Arrive at the Compost Facility.

The Mount Joy Borough/East Donegal Township facility will now be open every Friday from 3-6 PM and every Saturday from 9 AM-12 PM through November 18, 2017.

WHAT IS SEDIMENT POLLUTION AND WHY IS IT A CONCERN?

Mandated by the Environmental Protection Agency (EPA) in an effort to improve local water quality, municipalities with current MS4 permits and those municipalities who are required to obtain MS4 Permits in 2018 must reduce sediment pollution to local water bodies by 10 percent between 2018 and 2023.

What is Sediment?

Sediment is the loose sand, clay, silt, and other particles that settle at the bottom of a body of water. Sediment comes from soil erosion and from decomposing plants and animals, and can be transported into water bodies by wind and water.

Why is Sediment Pollution Harmful to the Environment?

- ⇒ Sediment accumulations in streams degrade water quality for drinking, wildlife, and recreation.
- ⇒ Sediment deposits can block stormwater drains and pipes, which increases the potential for flooding.
- ⇒ Sediment pollution causes cloudy water, which prevents wildlife from seeing potential food sources.
- ⇒ Murky water harms native vegetation.
- ⇒ Excessive sediment disrupts the natural food chain by destroying the habitat for the smallest stream organisms, leading to a decline in fish populations.
- ⇒ Sediment increases the cost of treating drinking water resulting in odor and taste problems.
- ⇒ Sediment can clog fish gills, reduce their resistance to disease, lower fish growth rates, and negatively affect fish egg and larvae development.
- ⇒ Nutrients transported by sediment can activate blue-green algae that release toxins and can make swimmers sick.
- ⇒ Sediment deposits can alter the flow of water and reduce water depth, which makes navigation and recreational use more difficult.

What Can You Do?

We should do everything possible to protect and preserve our water quality. We can all make a difference by adopting the following best practices:

- ⇒ Sweep sidewalks and driveways instead of using a hose.
- ⇒ Use weed-free mulch when re-seeding bare spots on your lawn, and use straw erosion-control matting to protect bare soils.
- ⇒ Avoid mowing within 10 to 25 feet from the edge of a stream. This will create a vegetative buffer zone to help filter stormwater runoff that may contain sediment.
- ⇒ Wash your car at a commercial facility or on your lawn so residue will filter through the soil rather than runoff into the stormwater system.
- ⇒ Promote environmental education. Help educate people in your community that increased erosion and sedimentation may affect their water quality and can harm animals and their habitats.
- ⇒ Notify the Borough Office when you see sediment (mud) entering streets or streams near a construction site.



To Report A Concern Please Contact:

Dave Salley - Stormwater Enforcement Officer
717-653-8226 or email: dsalley@mountjoypa.org



THANK YOU!!!

Students at St. Mark's United Methodist Church Vacation Bible School have generously donated \$360.00 to Mount Joy Borough in efforts to purchase native plants for the Grandview Park Rain Garden. The students saved and collected spare change in an event they called "Penny Wars". As a reward, students got to choose someone from St. Mark's Vacation Bible School staff to receive a pie in the face!



Mount Joy Borough has been awarded an EPA Chesapeake Bay Implementation Grant. Of the 17 municipalities who were awarded this grant, Mount Joy Borough is the only municipality to be awarded funding for two separate projects. Governor Wolf made a statement in support of the municipalities awarded this grant. "The convenience we all enjoy with pavement comes with a tangible cost: increased runoff pollution in our local waters," said Governor Wolf. "I'm pleased to support the municipalities—towns, cities, and other large land owners—striving to meet the stormwater challenge in Pennsylvania." The selected projects for this grant and

the amount which will be funded are for the Rotary Park Vegetation Swale (\$64,633) and the Pink Alley stormwater basin retrofit (\$40,422). With completion of these projects, Mount Joy Borough will meet it's required pollutant reductions from DEP.

- Is someone draining their pool into the street/alley?
- Do you see a foamy substance in the street/alley?
- Is someone discharging their sump pump into the street/alley?
- Is a vehicle leaking fluids that will eventually end up in the stormwater system?

**Report a Stormwater
complaint or concern?**

Please visit www.mountjoyborough.com
and click on stormwater reporting.



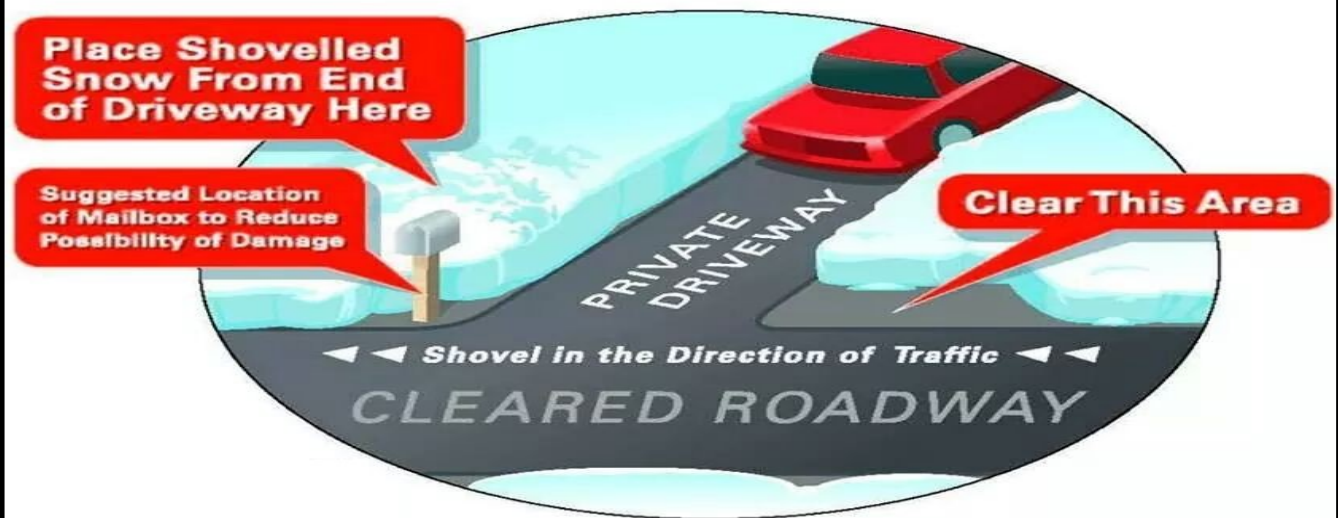
PUBLIC WORKS

▶ REPORT A CONCERN

You can now easily report Public Works concerns, including potholes, sinkholes and debris by using Mount Joy Borough's online reporting tool. Simply visit www.mountjoyborough.com, highlight the Public Works tab, and then select the Report a Public Works Concern

Avoid the "Second Shovel"

After a snowstorm, how many times have you shoveled your driveway only to have it plowed in when your local snowplow comes through? Clearing an area to the right of your driveway (as seen in the diagram below), giving the snow on the plow a place to go other than your driveway, should keep you from having to do the same job twice.



2017 Leaf Collection

Leaf Collection will start November and run through December 8 in the Borough. The following guidelines are to be followed for those participating in the pickup.



- Leaves must be raked into piles at the edge of the street or alley in plain view and far enough away from parked vehicles. The Public Works Department is not permitted to go on to anyone's property to collect leaves.
- Remove large sticks, branches, metal, lumber, rocks and/or plastic objects from leaf pile. Such items may cause damage to the equipment or employees and cause a delay in collection.
- If leaves piled by the curb have not been picked up within one week, please call the Borough Office at 653-2300 and leave your name and address as a reminder.
- Please do NOT bag leaves.



Rick Hallgren

"The Name You Know... for Real Estate!"™

65C E. Main Street

Mount Joy, PA 17552

Office: **653-2646 x103**

Cell: 940-0995 Fax: 653-2850

E-mail: rhallgren@homesale.com

Web site: www.RickHallgren.com



\$349,900

104 Crimson Lane

Great home for entertaining. 5 BdRm, 3.5 Bath, 3200 SqFt. Open 2 story Great room w-hardwood floors & gas fireplace. Spacious kitchen w-large island, double oven, & walk-in pantry. 1st floor office w-French doors. Hobby Room on 1st floor could be 5th bedroom. Spacious composite deck & large paver patio over look inviting In-Ground swimming pool. Mature trees provide natural privacy in back yard. Full daylight-walk-out basement. Finished rec room w-built-in cabinets. Wonderful neighborhood-convenient to train station.



\$219,900

32 Hemlock Circle

Nice solid 3 BdRm, 2.5 Bath 1288 SqFt all brick home on quiet Cul-De-Sac with mature trees. Newer carpeting, large finished family room in basement, nice sunroom & patio overlooking serene backyard. Propane gas heat. Oversized 2 car garage. Lots of storage space. Nice peaceful location. Convenient to Rte 743 & 283. All appliances included.



\$ 199,900

524 W. Main St

3 BdRm, 2 Bath 1972 SqFt 2 story is in excellent condition-Like New-Gutted & totally rehabbed-Drywall, Electrical, Plumbing, & Wiring. New Kitchen & baths, paint & flooring. Plenty of off street parking & large car size shed/shop. Potential in-home business location. Can be purchased w-additional .5 acre lot to rear MLS#265448. Convenient to train station, parks, & shopping. Lancaster, York, Hershey, & Harrisburg only 20-30 minutes.
\$ 199,900

www.RickHallgren.com

"Delivering the Very Best of Continuing Real Estate Service."



Wheels For Wishes is a car donation program benefiting Make-A-Wish® Philadelphia, Northern Delaware and Susquehanna Valley. We are proud to offer an easy way to recycle or donate unwanted cars, trucks, motorcycles, SUVs, RVs, or even boats, by turning them into a wish for a local child.

Visit us for more information at:
<http://philadelphia.wheelsforwishes.org/>

*Recycle your
 CFL Bulbs
 21 E Main St
 Mount Joy*



Save A Warrior

22 Veterans Commit Suicide Each Day

Founded by Ronald (Jake) Clark— a 1984 Graduate of Donegal High School—Save A Warrior is a safe, innovative, and evidence based resiliency program that offers an alternative to suicide so that returning warriors may thrive.

This program has been the subject of three documentary films including CNN's "The War Comes Home: Soledad O'Brien Reports"

Please give our Warriors a few minutes of your time and visit www.saveawarrior.org and info@saveawarrior.org.

Donations Welcome:

Save A Warrior

PO Box 2416

Malibu, CA 90265

Or

Text "Warrior" to 234-244-7283 (BIG-SAVE)

Or

Visit www.saveawarrior.org/donate





**Protect your
football season
fortress.**

Joel A. Langdon LUTCF, Agent
410-A West Main Street
Mount Joy, PA 17552
Bus: 717-653-2212
joel@joellangdon.com

Your home and car aren't just things. They're what you work hard for, and where you build your memories. Call me to give them the protection they deserve.



State Farm Mutual Automobile Insurance Company,
1706755 State Farm Fire and Casualty Company, Bloomington, IL

Since 1899

Sheetz

FUNERAL HOME, INC.

**Honored to Serve Our
Community**

Jonathan R. Sheetz

Supervisor

Andrew D. Dieck

Licensed Director

16 East Main Street, Mount Joy, Pennsylvania



Ferne Silberman
The Local Expert
Selling in our community

Direct: 717.653.2374

Cell: 717.575.8626

E-mail: fernesilberman@comcast.net

www.fernesilberman.com

Office: 717.653-2646 x.102

65C East Main Street

Mount Joy, PA 17552



BERKSHIRE HATHAWAY
HomeServices

Homesale Realty



Ferne is a life time resident of Mount Joy. She has the experience & knowledge of current market trends to help you in the sale or purchase of real estate. She is detailed, responsive to phone calls, text messages & Emails. Ferne has the **Certified Residential Specialist Designation**. Only 3% of Realtors, nationwide, hold this elite designation, which is earned by achieving high standards of education. Being very active and involved in the Lancaster County Association of Realtors and the Pennsylvania Association of Realtors, Ferne is current on the continuing changes in the industry. **When you are ready to sell or purchase your largest investment, call Ferne.**



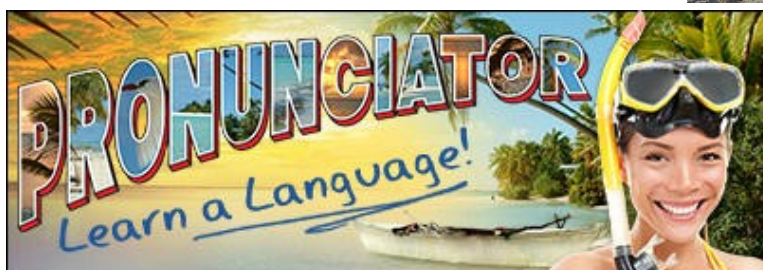
- Miss Jan holds monthly programs for children and families! Weekly story times, family bingo, preschool science, and homeschool art class are a few of the programs offered.
- The Library offers monthly adult programs as well! Adult Game Night is held the first Monday evening of every month at 6 PM. The Closely Knit group knits together the second and fourth Mondays of the month at 1pm. Yes, You CAN Paint is held the second Thursday at 2 PM and the fourth Wednesday at 6 PM. There are two monthly Book Groups from which to choose, and a Lifelong Learners program is held the fourth Monday of every month. New to the schedule is the Writers' Circle run by poet Ingrid Andersen on the fourth Monday of every month at 6 PM.
- The Friends' of the Milanof-Schock Library presented the Library with a check for \$22,000 to be used toward library materials and services. The Friends are great advocates of the Library and believe in the important role it plays in the community. If you or someone you know would like to become a part of this special group, please contact the Library. 717-653-1510



- We will be holding a Pork BBQ Fundraiser at the Library on Friday, October 13 from 4-7 PM. Dinners are \$10 each and come from Harveys Main St. BBQ. Each dinner includes Pulled Pork Sandwich, Cole Slaw, Baked Beans, and a Dessert. Plan to take this night off from cooking dinner and doing the dishes and let Harvey's cook for you! Tickets will be available in the Library, and all proceeds will benefit the Library.

- Our 15th Annual Benefit Auction was a great success! The Library grossed close to \$26,000 and had its highest attendance in the 15 years that we have held this auction. We want to thank all participants and volunteers for their support and contributions to this special event!
- The Friends' annual Gift, Book, and Bake Sale will be held Nov. 16-18 at the Library during Library hours (Friday it will be open 10-6)
- Did you know that the Library is more than just books? If it's been a while since you have visited, make sure to stop by and browse the aisles! The Library offers programs for all ages, family museum passes for free, public computers, passport service, DVDs, audio books, music, current popular magazines, puzzles, and a huge selection of resources for families!
- The Library has a small book store located inside the Library that is run by the Friends' Group. Hardcover novels and nonfiction are \$2 (some have special pricing), and they also offer DVDs, magazines, Children's books, and a selection of handmade doll clothes and accessories for 18" dolls.

- Does your child need a little extra help with reading skills? Kirby, a sweet Westie Reading Buddy who loves to listen to children read, is new to the Library and has been a certified therapy dog for 8 years! Kirby is at the Library every Wednesday evening; please call Miss Jan to reserve a time. 717-653-1510



- Pronunciator is a language-learning service that is available to you free of charge thanks to the Milanof-Schock Library! It is a fun way to learn any of 80 different languages with self-directed lessons, live teachers, movies, music and more! It is amazing the degree of customizing you can do through this on-line subscription service. Going on a vacation? Need help with a class? Studying for your naturalization exam? With over 80 languages to choose from, find what you are looking for at Pronunciator. It will tailor its programming to meet your needs, remember you weeks later, save your place, and help you practice at your own pace! And, there is no overdue charge. Visit our website to get started! All you need is your Library Card #. No card, no problem! Just come to the Library with proof of address and you can get one for free.

- This summer the Library created a Butterfly Garden as a little project for this year's Summer Reading Theme "Build a Better World." The butterfly garden was in full bloom all summer and was a buffet for a variety of winged creatures. We had a sad situation where little fingers squished 4 chrysalis that were hanging along the railing of our ramp out front, but after that, the caterpillars spread the word and told their friends to make their homes up high! We found 6 of them up under the eaves. For more photos of the garden, please visit the page on the Library's web site!



Find Us On...





62 East Main Street, Suite 1
 Mount Joy, PA 17552
 Hours: Tuesday-Friday 10 AM—4 PM
 Phone: 653-0773 Fax: 928-4789
 Email: info@mountjoychamber.com
 Website: <http://www.mountjoychamber.com>

Chamber Presents Economic Forecast Luncheon

The Mount Joy Chamber of Commerce will be hosting an Economic Forecast luncheon on Wednesday, November 8 at the Gathering Place from 11:45 AM—1 PM with Sen Elif as our speaker. The luncheon does have a fee of \$10 for Chamber members and \$15 for nonmembers, which covers the cost of your buffet meal. Please RSVP by November 3 by calling 653-0773 or email info@mountjoychamber.com.

Elif Sen is a senior economic analyst in the Research Department of the Federal Reserve Bank of Philadelphia. She analyzes regional data for the Bank's Third District, which includes eastern Pennsylvania, southern New Jersey, and Delaware; these analyses are released on the Bank's website. Sen also developed the monthly State Unemployment Rate Nowcasts, which predict the current month's unemployment rates for the states in the Third District.

Sen joined the Bank in 2006. She has a master's degree in urban spatial analytics from the University of Pennsylvania and a bachelor's degree in economics with a concentration in mathematical economics from Haverford College in Haverford, PA, and has completed the Bank's Financial Business Management Certificate Program at Temple University's Fox School of Business.

Start off Ground Hog Day with Mount Joy Minnie!!

Think Friday, February 2, 2018, and it's Ground Hog Day again! Bring the whole family out to celebrate with us and enjoy starting your morning with tasty refreshments, a great cup of coffee, a good laugh, a fun time, and being with friends and neighbors, young and old. Join us at 7 AM at the Rotary clock at E. Main Street & Marietta Avenue or under the Berkshire Hathaway canopy in case of inclement weather. It is a rain or shine event.

Don't forget to wear your silly/bizarre hat for the "silly hat" contest, which has become a popular event. We had quite a number of participants this year attending the event and participating in the silly hat contest. We couldn't provide prizes, amplification, advertising, etc. without our Chamber members who sponsor us and we send a big thank you to Keystone Lawn Care, American Legion Post 185, and Spot Light Media. This is a Mount Joy Chamber sponsored event and it's free and open to the community and surrounding environs. Come one, come all for the 2018 prognostication of our own Mount Joy Minnie. We look forward to seeing you there.





Mount Joy Chamber Welcome Bags

New to the Mount Joy area or just bought your first home? Be sure to stop at the Mount Joy Chamber of Commerce & Visitor's Center to pick up your Chamber Welcome Bag! This bag is available to you by the Mount Joy Chamber of Commerce members and is full of helpful information for the Mount Joy area along with a Chamber directory, coupons, pens, brochures, business cards and more.

To receive your Chamber Welcome Bag just stop in the Chamber office at 62 E. Main Street, Suite 1, Tuesday through Friday from 10 am to 4 pm. For more information you can call the Chamber office at 653-0773 or email info@mountjoychamber.com <http://www.mountjoychamber.com>

Mount Joy Money Gift Certificates Make Great Gift!

Have a hard to buy for family member or friend or don't know what to give your kids teachers? What to reward employees for a job well done! Why not purchase Mount Joy Money gift certificates at the Mount Joy Chamber office. They are available in denominations of \$5, \$10 and \$20 and can be used at 46 Chamber member businesses on things such as shopping, dining, lodging and services. What a great way to keep dollars right here in Mount Joy!!



Kim Sutter Eckels
 "YOUR HOMETOWN REALTOR"
 Realtor, Notary, Seniors Real Estate Specialist
 Keller Williams Realty
 1280 Plaza Blvd
 Lancaster, PA 17601
 Office Phone: 717-553-2500
 Cell: 717-575-8289
kimsuttereckels@gmail.com
 AVAILABLE 24/7

Greetings from the Mount Joy Area Historical Society!

The Mount Joy Area Historical Society has just 3 more programs scheduled for our 2017 year. We invite everyone in the community to visit our museum and enjoy the presentations by history experts, as well as getting a sneak peek at our continuing renovations on the Cemetery Road Schoolhouse project. You may wonder why it's called "Cemetery Road" – well, long before there was a Fairview Street as we know it today, the street DID exist, but Mount Joyians called it Cemetery Road because it led to the Mount Joy Cemetery, on the hill above the LCCTC (which was farmland back then!) The schoolhouse was built around 1843, so, you see, it was there on its little plot of land before Mount Joy Borough was incorporated (1851). Isn't that a fun fact?!

Programs planned for October, and November are:

- Monday, October 16th, Dr. Leroy Hopkins will share with us the heritage of Lancaster County's black community in his program entitled, "Good Witch of Pinch Gut Hollow & Other Prominent Blacks of Lancaster County."
- Monday, November 20th, our last program of 2017 will be presented by April Gammache and Gwendolyn Philips – Kit Your Bit and Meet Molly Marine!

All programs begin at 7 PM, following a short business meeting, and are free and open to the general public. **Parking is available at the Rainbow's End parking lot and the east end of the Lions Club Swimming Pool parking area.**

For additional information, to become a member, or to purchase any of our journals, please visit our website at www.mountjoyhistory.com or stop by the museum any Sunday afternoon between 1 – 4 PM. Thank you for supporting the Mount Joy Area Historical Society!

Lancaster County Prescription Drug Discount Cards Continue to Offer Great Savings to County Residents

Lancaster County residents have saved more than 2.2 million dollars on more than 100,000 prescription medications with the Lancaster County Prescription Drug Discount Card Program—a program offered by the Lancaster County Board of Commissioners.

The cards are FREE and there are no eligibility requirements, enrollment forms, or membership fees to use the program. Simply pick up a card and take it to a participating pharmacy to receive a discounted rate on prescription medications that are not covered by a health insurance plan. One card can even be used for the whole family!

We are happy to make the Lancaster County Prescription Discount Cards available to you at Mount Joy Borough Office, 21 East Main Street, Mount Joy. Please stop in to pick one up.

For additional information about the program or to find a participating pharmacy near you, please visit www.caremark.com/naco, www.co.lancaster.pa.us, or call toll free 1-877-321-2652. You may also contact the County Commissioners' Office at 299-8300.

This program is available through the Commissioners' partnership with the National Association of Counties (NACo) and is administered by Caremark.



Snow and Ice Removal

Snow and ice are to be removed from all sidewalks in front of or alongside properties within 24 hours after such snow and ice has stopped. There shall be a clear walk which must be at least 3' wide along the entire length of the sidewalk. In the event the snow and ice becomes so hard it cannot be removed, sand or another abrasive can be placed upon the sidewalk to make travel reasonably safe and, as weather permits, proceed to clear a path.

An accumulation of snow and ice on a building or any other structure which is liable to fall on any sidewalk, roadway or other public way must be removed within a reasonable time, but no later than 24 hours after the cessation of any fall of snow, sleet or freezing rain.

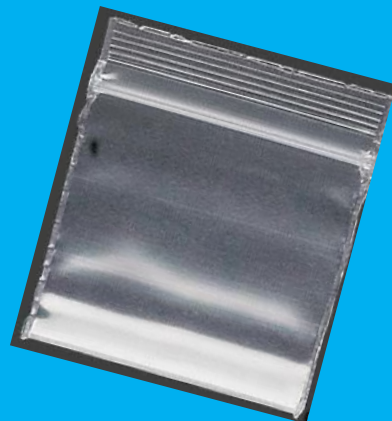
Snow and ice shall also be removed surrounding a fire hydrant, and no snow shall be deposited immediately next to a fire hydrant, or on any sidewalk, travel lane of a street or loading or unloading area of public transportation system.



Old Prescription Disposal

CVS Pharmacy provided us with a drop box for unwanted medication. The box is located inside the front lobby and is accessible anytime the Borough Offices are open to the public. Instructions are posted on top of the box, and clear plastic baggies are provided for depositing medications. **Medications MUST be dumped out of the original prescription bottle and put into one of these bags.**

They may be mixed together with other medications. NO liquids, ointments or creams. Pills and capsules ONLY.

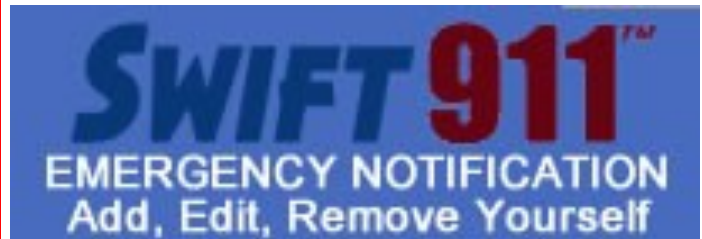


Regulations from DEP Regarding Water Main Breaks

There is very specific protocol required by DEP (Department of Environmental Protection) when a water main break occurs. Depending on how and what type of break happens, precautionary boil notices will be put out. When you see the boil notice, there isn't necessarily a problem; we are just following DEP protocol. Please feel free to contact the Mount Joy Borough Authority at 653-5938 if you see a boil notice and have any questions.



Mount Joy Borough Authority has contracted with SWIFT Reach Network to have an immediate response mechanism to alert you of any important news relative to your water/sewer service. Currently we have basic information for most property owners. You are able to access this file to add/change items, such as cell phone or other electronic devices such as e-mail. Please visit mountjoyborough.com and click on the link to the left that says "Police", then follow to the link that says "Swift 911 Emergency" to submit your information electronically. This system will also be available for use by the Borough and Police Department to alert you of emergencies.



Work Orders

Meters are read four times per year, typically in February, May, August and November. Each quarter when this is completed there are always a few meters that did not read for various reasons. When this happens this will require a work order be generated for each of those particular properties. Once a work order is created, one of the Mount Joy Borough Authority employees will come out to look at the problem and fix it. Each employee will always have proper identification on them so you can verify that they are in fact an employee of Mount Joy Borough Authority. If you ever have any questions about this please do not hesitate to call the office at 653-5938.

Example
of

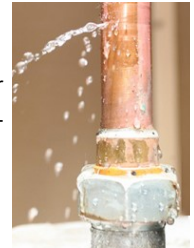
Work Order

Mount Joy Borough Authority Meter Repair Order	
CUSTOMER INFORMATION	WORK PERFORMED
Name:	
Address:	
City: Mount Joy State: PA Zip: 17552	
Account No:	
Meter No:	
MXU No:	
Previous Reading:	
CURRENT PROBLEMS	
Return To:	
Date:	
Signature:	
<p>I, _____ represent and acknowledge in allowing and consenting to the entry of Mount Joy Borough Authority employees onto the property identified on this document that I am: (1) the owner of the property or a duly authorized representative of the property owner, (2) I have the authority to grant this access, and (3) I am of legal age to grant this access.</p> <p>Signature of Person Named Above _____ Signature Mount Joy Borough Authority Employee _____</p>	

Things You Can Do To Prevent Water Waste



- Check your toilets for leaks. (Put food coloring in your toilet tank. If, without flushing, the color begins to appear in the bowl, you have a leak that should be repaired.)



- Replace older toilets with efficient water saving toilets.
- Check all faucets, pipes, hoses and couplings for leaks inside and outside of your home. (Leaks outside the house may not seem as bad because they're not as visible. They can be just as wasteful as leaks inside.)
- Rinse your razor in the sink.
- Turn off the water after you wet your toothbrush.
- Use your automatic dishwasher and washing machine only for full loads.
- If you wash dishes by hand, don't leave the water running for rinsing.
- Don't let the faucet run while cleaning vegetables.
- Keep a bottle of drinking water in the refrigerator.
- Water your lawn only when it needs it.
- Deep-soak your lawn. Water during the cool parts of the day. (Early morning is better than dusk because it helps prevent growth of fungus.)
- Plant drought-resistant trees and plants.
- Put a layer of mulch around trees and plants. (Mulch slows evaporation of moisture and discourages weed growth.)
- Don't water the gutter.
- Use a broom, not a hose, to clean driveways and sidewalks.
- Don't run the hose while washing your car.
- Tell your children not to play with the hose and sprinklers.
- Take shorter showers.
- Install water-saving showerheads or flow restrictors.
- Take baths.



Water Plant Update: As stated in previous newsletters and in the Annual Consumer Confident Report, the Authority has been working on plans for a new water treatment plant that will run in conjunction with the existing Carmany Road Water Plant. We are pleased to announce that the contract for the facility has been awarded. PACT TWO LLC has been awarded the General Contract, Electrical & Plumbing has been awarded to Garden Spot Electrical/Mechanical and W.C. Eshenaur & Son has been awarded the HVAC contract.

The new facility will be constructed on a portion of the property that is currently being used by Mount Joy Borough for its Composting Operations. Contractors are currently in the process of mobilizing their equipment for the project along with the submission of materials, drawings and other instruments needed to begin the construction.

As the project progresses, Authority staff will be uploading photographs on Mount Joy Boroughs website monthly, these photos can be viewed by accessing mountjoyborough.com then placing your cursor on Borough Authority and scrolling down to click on Borough Authority Projects.

NEW Water Plant



Mount Joy Borough Authority strives to keep water and sewer rates as low as it will allow. MJBA also continues to stay in compliance with the Chesapeake Bay Regulations which may, in future plans, raise these rates. MJBA and its staff, continue to maintain accurate service for its service district, which includes Mount Joy Borough, and portions of Mount Joy, East Donegal and Rapho Townships.

Water: \$58.16/ first 8,000 gallons used each quarter

Sewer: \$70.47/ first 8,000 gallons used each quarter

- \$7.27 is applied to each 1,000 gallons over the 8,000 gallons for water, but only up to 30,000 gallons, then the rates change.
- \$8.81 is applied to each 1,000 gallons over the 8,000 gallons for sewer, but only up to 30,000 gallons, then the rates change.

Example of an 8,000 gallon minimum quarterly water and sewer bill: \$128.63

Example of a 12,000 gallon average quarterly water and sewer bill: \$192.95

Complete rate schedule can be found at www.mountjoyborough.com.



Photo caption:

Juniper Village at Mount Joy hosted The Werner Family Band. The band, originating from Mount Joy Pennsylvania, plays a mixture of traditional and instrumental bluegrass songs as well as some gospel tunes. Juniper residents were toe-tapping, thigh-slapping, and hand-clapping in an attempt to keep up with the beat of the gifted musicians as they fingered the guitar, banjo, fiddle, mandolin, and upright bass. The band set a beautiful atmosphere with their humility, warm personality, and continual music.

STAYING CONNECTED TO STAY HEALTHY

Experts warn that today's greatest public health crisis is not cancer or heart disease. It is isolation and the effects of being socially disconnected, explains Debra Miller, Executive Director of Juniper Village at Mount Joy.

Social isolation is prevalent across all ages, but is more common among older adults, who are more vulnerable to become isolated or lonely when they lose a partner or friends, experience a negative health ailment, have mobility challenges, leave the workforce, or move to a new community. Human connection lies at the heart of human well-being. An important part of leading a healthy lifestyle is maintaining bonds where they're fading, and creating new ones where they haven't existed. It just takes a little courage and a spirit of adventure, but a sense of connection can be nurtured and built.

A move into an assisted living community is a wonderful and healthy way to stay connected. A well-run community will organize programs for seniors and hold social events and group activities that reinforce social ties. Here are some other ways for seniors to enhance social engagement:

- Do acts of service and kindness for others. Research shows that compassion and volunteering has huge health benefits and creates a sense of connection and purpose.
- Ask for help. It will create a sense of belonging for those we ask. Research shows that people are willing to help us, but if we don't ask, they assume we don't need help.
- Participate in group physical fitness activities.
- Become an active member of organizations, clubs and houses of worship.
- Initiate and warmly receive telephone conversations with friends or family.
- Maintain frequent internet usage for email and other social purposes.
- Take part in programs and organized group activities for older adults.

And remember, a chat a day keeps the doctor away.

For more information contact Juniper Village at Mount Joy at 717.492.9692

Juniper Village

What Is Anticipatory Grief?

by Paul Gardner of the Buch Family Funeral Homes

When people think of grief, they usually relate it to the period following the death of a loved one. What many people don't realize is that the grieving process can actually start before someone has died.

Anticipatory grief is a reaction that occurs before an impending loss. Family and friends of someone who is suffering from a debilitating condition, has declining health or is in hospice care are examples of situations that may trigger anticipatory grief. This type of grief can be more difficult or intense than normal post-death grief.

Intellectually, we all understand that "everyone has to go sometime," but being faced with inevitability on a day-to-day basis can increase anxiety about how much time we have left with our loved ones. Symptoms of anticipatory grief can vary and may include: a heightened concern for the loved one, imagining their death, a greater sense of urgency to complete unfinished business, depression, exhaustion, and mourning the loss of their loved one's independence and personality.

It is important to remember that while anticipatory grief is natural and can actually help prepare for the loss of a loved one, it can also be overwhelming. There are things that can help you cope if you experience anticipatory grief.

Connect with others: The stress created from anticipatory grief can be great, so make sure you stay connected with people. This can be family, friends or support groups that include others going through the same type of situations.

Reflect on the remaining time: Reflect on how you want to spend the remaining time with your loved one. Share old memories, talk with them about their bucket list and discuss their final wishes. Don't allow the stress of the situation diminish the time you do have left.

Take care of yourself: Make sure you are taking time to take care of you. Finding an outlet for your stress will help you through this difficult process.

Rely on your support system: Often, when people are stressed, they resist accepting help from their support systems. Falling back on others and accepting their help will relieve some of your stress and allow you to enjoy some of the remaining time with your loved one.

The last thing to note about anticipatory grief is that those who experience this type of grief are not immune to experiencing the separate and different grief once their loved one passes. While neither is easy, each type of grief is normal when experiencing loss.



Barry Sauder
Office: 717-299-7199

Serving Lancaster, Mount Joy, and surrounding areas

customplumbing@embarqmail.com

Discover Our Downtown

4TH FRIDAY

Downtown Mount Joy

Explore Downtown

5-8 p.m.

**Every Fourth Friday
of the Month**

SMALL BUSINESS
SATURDAY
NOVEMBER 25

**SHOP
SMALL**



**MOUNT JOY
2017**

**Saturday
December 2
4-7 p.m.**



Find a complete list of events at www.msmtj.com

Borough Office Holiday Schedule

Thanksgiving

November 23-24, 2017

Christmas

December 25, 2017

New Year's Day

Monday, January 1, 2018

Presidents' Day

Monday, February 19, 2018

Good Friday

Friday, March 30, 2018

Memorial Day

Monday, May 28, 2018

Independence Day

Wednesday, July 4, 2018

Labor Day

Monday, September 3, 2018

Thanksgiving

Thursday & Friday, November 22 & 23, 2018

Christmas

Tuesday, December 25, 2018

Closed...

Mount Joy Athletic Association



Mountjoyaa.com

ECRWSS EDDM
Postal Customer

The Mount Joy Messenger is distributed through bulk mailing. Therefore, it is received by a few residents of surrounding municipalities.

Borough Office Hours
Monday-Friday 7 AM - 4 PM

2017 Meeting Schedule

(All meetings are open to the public.)

- Borough Council meets the first Monday of each month at 7 PM. The November 6 meeting will take place at 6 PM.
- Borough Authority meets the first and third Tuesday of each month at 4 PM.
- Borough Planning Commission meets the second Wednesday of each month at 7 PM.
- Council Public Works Committee meets the second Monday of each month at 6:30 PM.
- Council Administration and Finance Committee meets the fourth Thursday of each month at 6:30 PM except November 16.
- Council Public Safety Committee meets the fourth Monday of each month at 6:30 PM except December 18.
- Zoning Hearing Board meets the fourth Wednesday of each month at 7 PM except November 15.
- Borough Authority Finance Committee meets November 1 at 5 PM
- Borough Authority Administration Committee meets October 24 at 5 PM.

To view the 2018 meeting schedule please visit www.mountjoyborough.com after December 31, 2017.

Borough Officials

Timothy Bradley, Jr., Mayor
Charles Glessner, President (East Ward)
Brian Youngerman, Vice-President (Florin Ward)
Joshua Deering, President Pro-Tem (East Ward)
Mary Ginder, Councilor (West Ward)
Jon Millar, Councilor (East Ward)
William Hall, Councilor (East Ward)
Mike Reese, Councilor (West Ward)
Jake Smeltz, Councilor (Florin Ward)
Hans Seidel, Councilor (Florin Ward)

Samuel Sulkosky, Borough Manager/Secretary
Maurice Williams, Chief of Police
Stacie Gibbs, Zoning/Code Enforcement Officer
David Salley, Stormwater Officer/Assistant Zoning & Code Enforcement Officer
Dennis Nissley, Public Works Director

Borough Authority Members

John D. Rebman, Chairman
Robert Golicher
Larry Derr
Richard Hamm
Chris Metzler

John Leaman, Authority Administrator/Manager
Joe Ardini, Assistant Authority Manager

(You may contact the Borough office at 653-2300 at any time to leave a message for a Borough Official or an Authority Board Member.)

This newsletter was published by Lindsey Edgell at the Mount Joy Borough Office. If anyone has any questions, comments, or suggestions, e-mail her at Lindsey@mountjoy.org. Also, anyone looking to advertise their local business in the next edition of the Messenger, please call 653-2300 or e-mail at the address listed above.

The Mount Joy Messenger is published by the Borough of Mount Joy and Mount Joy Borough Authority to provide information to the community concerning the Borough, the Authority, and nonprofit, nonpolitical organizations providing services in the community or working for the betterment of the community which do not limit their services on the basis of race, sex, religious affiliation, national origin or other similar classification. Nonprofit, nonpolitical organizations which provide services to residents of the community on nondiscriminatory basis or which promote the betterment of the community are permitted to submit articles describing their organization and services for inclusion in the Mount Joy Messenger. The inclusion of an article does not constitute an endorsement of the organization or philosophy stated in such article, and the Borough and the Authority make no representation as to the quality of the services of any organization. The Borough and the Authority reserve the right to reject any article submitted by any organization which does not provide services within the community, which is political in nature, which does not relate to services provided on a nondiscriminatory basis, which does not promote the betterment of the community or which limits its services on the basis of race, sex, religious affiliation, national origin or similar classification.