



MOUNT JOY MESSENGER

A GREAT PLACE TO LIVE, WORK AND PLAY!



Photo by: Alex Grande
FDMJ at Winterfest
December 7, 2024

NEW MUNICIPAL COMPLEX CONSTRUCTION

In our last newsletter, we announced Borough Council's approval of the new municipal complex at 300 Orchard Road—a major step toward improving essential services for our growing community. Now, we're excited to share that construction is well underway!

Since breaking ground in the spring, crews have made significant progress. The foundation and floors are poured, and the walls are now going up, giving shape to what will soon be a modern and efficient hub for Borough operations.

Continued on next page...



MUNICIPAL COMPLEX CONTINUED...



Inside, planning is already underway for the next stages, with office furniture and interior finishings being selected to create a comfortable, functional, and welcoming environment for both staff and residents.

This new facility will bring Borough staff, Borough Authority staff, and the Borough Police Department together under one roof, improving coordination and accessibility.

If all goes as planned, the complex will be complete in the spring of 2026—right on schedule. We'll continue to provide updates as we get closer to move-in day and look forward to welcoming the community into this exciting new chapter for Mount Joy.

HOLIDAY OFFICE CLOSURES
Please be aware the Borough offices will be closed on the days listed.



Thanksgiving
November 27-28



Christmas
December 25



New Year's Day
January 1



SHOP
DINE
PLAY
LOCAL

Discover businesses at mountjoychamber.com
Find community events at voyagemountjoy.com
Learn about our history at mountjoyhistory.com



STREAMBANK RESTORATION

The Borough's streambank restoration project is moving along steadily. Phase I—improvements within the park—has been completed. Phase II is currently underway, stretching from Route 772 to the park. Looking ahead, Phase III will extend from the park to Route 230 (East Main Street).

Funding for this important environmental project comes from a grant awarded by Clean Water Partners. While heavy summer storms did flood the park and wash away a few picnic tables, the restored streambank held strong, and the project schedule remains on track.

The benefits of this project go far beyond Mount Joy. By stabilizing the streambank, reducing erosion, and filtering runoff, these improvements help keep excess sediment and pollutants out of our local waterways. Since our streams ultimately flow into the Susquehanna River and then the Chesapeake Bay, this restoration plays a small but important role in protecting water quality and aquatic habitats far downstream.

Visit our Facebook page to see more photos of the progress and work in action!

RAIN GARDENS: BEAUTY WITH A PURPOSE

A rain garden is more than just a pretty addition to your yard—it's a smart, environmentally friendly way to help protect local streams and rivers. Designed to collect and absorb rainwater runoff from roofs, driveways, and lawns, rain gardens use specially chosen plants, soil, and mulch to filter pollutants and allow water to soak back into the ground.

When it rains, water flows quickly over hard surfaces, picking up pollutants like oil, fertilizer, and debris before heading into storm drains. This runoff often ends up in our streams, causing erosion, flooding, and water quality problems. A rain garden slows down and cleans that runoff, reducing strain on stormwater systems and helping recharge groundwater supplies.

Right here in Mount Joy Borough, residents can see a rain garden in action. The Community Rain Garden is located behind the Borough building at 21 East Main Street. It was funded by the League of Women Voters of Pennsylvania Citizen Education Fund through a Growing Greener Grant from the PA Department of Environmental Protection. This space not only manages stormwater but also serves as a living example of how rain gardens can combine beauty and function.



The Benefits

- Protects Local Waterways by filtering pollutants before they reach streams.
- Reduces Flooding by absorbing and slowing down stormwater.
- Supports Wildlife by providing food and habitat for pollinators, birds, and beneficial insects.
- Beautifies Your Property with colorful, low-maintenance native plants.

Whether you have a small yard or a larger property, a rain garden can be designed to fit your space and budget. The key is choosing the right location and plants, especially native species that thrive in our region.

To learn more about how to design, plant, and maintain a rain garden, visit:

- [Rain Garden 101 – MyWatersheds.org](https://www.mywatersheds.org/rain-garden-101)
- [StormwaterPA: Saving Streams One Yard at a Time](https://stormwaterpa.org/saving-streams-one-yard-at-a-time)
- [Penn State Extension: Rain Gardens – The Plants](https://pennstateextension.org/rain-gardens-the-plants)
- [Project Green Lancaster](https://projectgreenlancaster.org)

MOUNT JOY BOROUGH AUTHORITY WATER & SEWER:

How Rates Compare - and How We Keep Them Low



When you look at your monthly expenses, essentials like electricity, internet, gas, and groceries typically top the list. Yet water and sewer service - vital as they are - remain notably affordable thanks to the Mount Joy Borough Authority's efficient operations. Here's how your water and sewer rates stack up against other household costs - and what we do to keep them budget-friendly.

Current Rates (Effective May 1, 2025)

Water - Quarterly

- First 8,000 gallons: \$79.76 minimum
- Next 22,000 gallons: \$9.97 per 1,000 gallons
- Next 270,000 gallons: \$9.11 per 1,000 gallons
- Over 300,000 gallons: \$8.61 per 1,000 gallons

Sewer - Quarterly

- First 8,000 gallons: \$92.16 minimum
- Next 22,000 gallons: \$11.86 per 1,000 gallons
- Next 270,000 gallons: \$9.84 per 1,000 gallons
- Over 300,000 gallons: \$9.38 per 1,000 gallons

What This Means for a Typical Household

Quarterly Usage	Quarterly Bill	Monthly Equivalent
8,000 gallons	\$171.92	\$57.31
12,000 gallons	\$259.24	\$86.41

Cont.

Monthly Cost Comparison

Utility/Expense	Cost (Quarterly)	Monthly Equivalent
Water + Sewer	\$171.92 - \$259.24	\$57 - \$86
Electricity*	---	\$146 - \$178
Internet/Cable*	---	\$90 - \$110
Gas Heat (avg.)*	---	\$80 - \$120
Cell Phone Service	---	\$50 - \$75
Groceries (PA avg.)	---	\$278 per person

*Electricity, Internet/Cable, and Gas Heat are billed monthly by most providers, so only monthly averages are shown.

How We Keep Rates Low

1. Quality Staff - The Authority Employs highly qualified staff whose expertise reduces the need for outside contractors, keeping repair and maintenance costs lower for our customers.
2. Low Unaccounted-for Water - Through proactive leak detection, timely repairs, and regular system audits, we keep unaccounted-for water loss well below industry averages. This means less water needs to be pumped, treated, and delivered - reducing both water production and wastewater treatment costs.
3. Preventative Maintenance Programs - Regular inspections and timely repairs extend the life of major assets, avoiding costly emergency work and minimizing service disruptions.
4. Electric Savings - We have converted facility lighting to energy-efficient LED fixtures, cutting lighting energy use by up to 70% and reducing maintenance needs. We also use Variable Frequency Drive (VFD) to operate pumps, ensuring motors run only at the speed necessary, lowering electricity consumption and reducing equipment wear.

Bottom Line

Even as grocery bills average around \$278 per person per month, and electricity, internet, and heat costs climb, Mount Joy's water and sewer rates remain comparatively small and stable. At just \$2-\$3 a day, residents benefit from clean water, dependable sewage treatment, and the assurance that the utility provider is operating efficiently and sustainably.

Mount Joy Borough Authority Important Information

Residential Meter Replacements

Authority staff are continuing with the meter replacement project. Should you receive a letter stating that we are doing meter replacements in your area, please contact us immediately at 717-693-2116 to schedule a time that is convenient for you.



Attention Commercial & Industrial Customers

Authority staff will be conducting surveys and inspections at commercial and industrial properties over the coming months. These efforts are part of our ongoing system maintenance and compliance initiatives. Additional information regarding the surveys will be mailed directly to each customer. We appreciate your cooperation and support!



Water Main Replacement

Authority staff is preparing to start a water main replacement project on portions of Martin Ave and Florin Ave in the coming months. This project will include the installation of approximately 1,500' of 8" water main, new fire hydrant installations, connection to existing service lines, and abandonment of existing water mains. If your property or water service connection will be a part of this project, additional information will be mailed to you directly in the upcoming weeks.



The Mount Joy Borough Authority will continue its Fire Hydrant Flushing program in 2025. This year's program will be focusing on the southwest side of the water distribution system. We will be flushing periodically throughout the spring, summer, and fall months from 8AM to 3PM. During this time, some customers may experience a brief change in water clarity or pressure. If this occurs, your water pressure will come back to normal following the flushing procedures, if you experience a change in your water clarity, please run a faucet for a few minutes and your water's clarity will return to normal.

For more Authority project information, scan the QR code or go to mountjoyborough.com.



Maintaining your sewer lines proactively saves time and money.

Proper Waste Disposal:

Never flush non-flushable items or pour grease down the drain.



Avoid Tree Roots:

Use landscaping strategies to keep roots away from sewer lines.

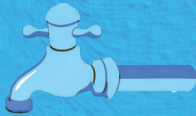


Harsh Chemicals:

Never flush solvents and flammable liquids, acids or corrosive materials, pesticides, herbicides, oil-based products or cleaning agents.



Fix Leaks Immediately



A small drip from a leaky faucet can waste as much as 20 gallons of water per day. Regularly check and repair any leaks in toilets, faucets, water softener, and pipes to prevent water wastage.

1. Check your water meter before and after a two-hour period when no water is being used. If the meter does not read exactly the same, you probably have a leak. (Just make sure no one uses any water in the interim.)

2. Put a few drops of food coloring in each toilet tank. After 30 minutes, if the color spreads into the toilet bowl, then there's likely a leak.



3. Periodically check all faucets to make sure they are not leaking.



A continued leak from a hole shown below, over a 3 month period, can waste the amount of water shown below.

● 1/16" 74,000 Gallons/Qtr 822 Daily Avg ● 1/8" 296,000 Gallons/Qtr 3,288 Daily Avg ● 3/16" 652,000 Gallons/Qtr 7,244 Daily Avg ● 1/4" 1,181,000 Gallons/Qtr 13,122 Daily Avg

Board Members

John D. Rebman
Larry Derr
Chris Metzler
Michael Melhorn
Paul Ruffini

Administration

Scott Kapcsos, Authority Manager
Zachary Dennis, Assistant Manager
Lindsey Edgell, Business Manager
Melissa Lee, Admin Assistant
Shavon Vasquez, Admin Assistant

Water Department

Scott Kling, Chief Operator
Shawn Younger, Operator
Jason Bowers, Operator
Tom Megashko, Operator

Sewer Department

Gary Karichner, Chief Operator
Ralph Eckels, Operator
David Piatt, Operator
Susan Parker, Operator
Brian Shank, Operator

Construction Department

Caleb Pardun, Supervisor
Rory Frey, Operator
Randall Seldomridge, Maintenance

MOUNT JOY BOROUGH AUTHORITY | 21 E MAIN ST, MOUNT JOY, PA 17552 | AUTHORITY@MOUNTJOYPA.ORG

OFFICE HOURS | 7AM TO 4PM | PHONE: 717-653-5938

FLASH FLOODING, THE 100-YEAR FLOOD AND OTHER FLOODING QUESTIONS

by Councilman Bill Hall

Recently, Mount Joy has experienced a number of significant rain events that have caused both flooding and flash flooding. Hundreds of homes in Mount Joy experienced damage from these storms ranging from wet carpets to wall collapse. While this article will not correct any of that damage, hopefully, it will give you some insight into what flooding is, what causes it, and what we can do to reduce it or reduce its impacts.

Let's look at some terms and definitions:

Flooding – The National Weather Service (NWS) defines flooding as the inundation of a normally dry area caused by rising water in an existing waterway, such as a river, stream, or drainage ditch.

Flash Flooding – According the National Weather Service flash flooding is Flooding that begins within 6 hours, and often within 3 hours, of a heavy rainfall (or other cause such as a dam breach).

100-year Flood – According to the National Weather Service (NWS), a 100-year flood doesn't mean it will only occur once every 100 years. It signifies a flood event that has a 1% chance of being equaled or exceeded in any given year. This means it could happen multiple times within a century, or even in consecutive years. The amount of rain required varies by area. In Mount Joy, that amount is about 7.5" over 24 hours.

Flash Flooding is possible everywhere. The normally tranquil streams and creeks in your neighborhood or area can become raging torrents if heavy rain falls overhead -- or even upstream of your location! Flash Flooding can also occur on city streets and highway underpasses. I can happen in your yard, patio or driveway. Flash floods occur when the ground cannot absorb water as fast as it falls, or the stormwater management system cannot convey the water as fast as it falls, leading to rapid accumulation and runoff.

New development in Pennsylvania must manage the 100-year flood on site. Older portions of the Mount Joy Borough were built before this requirement. Flash flooding is a different story. It would be far to expensive and difficult to design and build a stormwater system to handle the rate of rainfall often seen with a flash flood.

 **What the Borough Is Doing – And How You Can Help**

Mount Joy Borough Council and staff are actively discussing ways to improve stormwater flow and reduce flood risk. But we need your help too.

💧 Help Keep Stormwater Moving:

- Inspect storm drains near your home monthly.
- Look for debris or plant growth that could block water flow.
- ⚠️ Never clear drains yourself, especially during rain — it's unsafe.
- ➡️ Report issues to the Borough at www.mountjoyborough.com or 717-653-2300.

🏠 Sump Pump & Drainage Tips from Councilman Brian Youngerman:

- Test regularly — Even if your sump pump doesn't run often, fill the pit with water to ensure it works.
- Check during storms — In both light and heavy rain, see how often it runs, whether water exits easily, and if the discharge line is clear.
- Perform maintenance — Clear debris from the pit and have an expert inspect it annually (cleaning, float test, checking discharge lines for clogs/leaks, and verifying all parts work).
- Replace proactively — Like a water heater, replace your sump pump every few years, even if it seems fine.
- Add protection — Install a one-way check valve to your sanitary sewer link to prevent water from flowing back in. Consider a second pump for redundancy, a battery backup for power outages, or a water-powered backup pump that runs on public water pressure.
- Get alerts — Install a water detection alarm (smart versions can alert your phone). Smart outlets can notify you if the pump loses power.
- Direct water away — Landscape or extend discharge pipes to send water well away from your home.
- Maintain gutters & downspouts — Keep them clear and consider leaf guards. Downspouts should empty 7–10 feet from your foundation (and not toward a neighbor's).
- Follow local rules — Ensure all work complies with Borough plumbing codes.

🧰 Extra Preparedness Tips:

- Leave a house key with a neighbor if you'll be away.
- Install webcams or smart doorbells for remote monitoring.
- Sign up for Borough alerts to receive updates on severe weather and flooding.

Working together — residents and Borough alike — we can better prepare for future storms and reduce the damage they cause. Thank you for doing your part to keep Mount Joy safe and resilient.





POINT PRECIPITATION FREQUENCY ESTIMATES

G.M. Bonnin, D. Martin, B. Lin, T. Parzybok, M.Yekta, and D. Riley

NOAA, National Weather Service, Silver Spring, Maryland

[PF tabular](#) | [PF graphical](#) | [Maps & aeriels](#)

PF tabular

PDS-based point precipitation frequency estimates with 90% confidence intervals (in inches) ¹										
Duration	Average recurrence interval (years)									
	1	2	5	10	25	50	100	200	500	1000
5-min	0.322 (0.290-0.357)	0.383 (0.345-0.426)	0.451 (0.406-0.501)	0.500 (0.449-0.555)	0.559 (0.500-0.619)	0.601 (0.535-0.665)	0.642 (0.569-0.710)	0.679 (0.599-0.752)	0.723 (0.634-0.800)	0.757 (0.659-0.838)
10-min	0.514 (0.464-0.570)	0.612 (0.552-0.681)	0.722 (0.650-0.803)	0.800 (0.718-0.887)	0.892 (0.796-0.987)	0.957 (0.853-1.06)	1.02 (0.905-1.13)	1.08 (0.950-1.19)	1.14 (1.00-1.27)	1.19 (1.04-1.32)
15-min	0.642 (0.580-0.713)	0.770 (0.694-0.856)	0.914 (0.822-1.02)	1.01 (0.908-1.12)	1.13 (1.01-1.25)	1.21 (1.08-1.34)	1.29 (1.14-1.43)	1.36 (1.20-1.50)	1.44 (1.26-1.59)	1.50 (1.30-1.66)
30-min	0.881 (0.795-0.978)	1.06 (0.959-1.18)	1.30 (1.17-1.44)	1.47 (1.32-1.63)	1.67 (1.50-1.85)	1.83 (1.63-2.02)	1.98 (1.75-2.18)	2.11 (1.86-2.34)	2.29 (2.01-2.54)	2.42 (2.11-2.68)
60-min	1.10 (0.991-1.22)	1.33 (1.20-1.48)	1.66 (1.50-1.85)	1.91 (1.71-2.12)	2.23 (1.99-2.47)	2.47 (2.20-2.74)	2.72 (2.41-3.01)	2.96 (2.62-3.28)	3.29 (2.88-3.64)	3.54 (3.08-3.92)
2-hr	1.30 (1.18-1.45)	1.58 (1.42-1.75)	1.99 (1.80-2.21)	2.32 (2.08-2.57)	2.78 (2.48-3.07)	3.15 (2.80-3.48)	3.54 (3.13-3.91)	3.95 (3.46-4.36)	4.53 (3.93-5.01)	5.00 (4.30-5.53)
3-hr	1.42 (1.28-1.58)	1.72 (1.56-1.92)	2.17 (1.96-2.42)	2.53 (2.28-2.82)	3.03 (2.71-3.36)	3.44 (3.05-3.80)	3.87 (3.41-4.28)	4.32 (3.78-4.77)	4.95 (4.29-5.48)	5.46 (4.69-6.05)
6-hr	1.75 (1.58-1.96)	2.12 (1.91-2.38)	2.67 (2.40-2.99)	3.12 (2.80-3.49)	3.78 (3.36-4.21)	4.34 (3.83-4.82)	4.93 (4.32-5.47)	5.58 (4.84-6.18)	6.52 (5.58-7.21)	7.30 (6.17-8.08)
12-hr	2.13 (1.92-2.42)	2.58 (2.31-2.92)	3.27 (2.92-3.70)	3.86 (3.43-4.35)	4.73 (4.18-5.31)	5.49 (4.80-6.14)	6.32 (5.48-7.06)	7.25 (6.21-8.08)	8.64 (7.26-9.62)	9.83 (8.15-10.9)
24-hr	2.47 (2.26-2.72)	2.98 (2.74-3.28)	3.80 (3.49-4.19)	4.52 (4.12-4.96)	5.60 (5.07-6.12)	6.55 (5.88-7.14)	7.62 (6.76-8.27)	8.81 (7.72-9.55)	10.6 (9.16-11.5)	12.2 (10.4-13.2)
2-day	2.86 (2.63-3.16)	3.46 (3.18-3.82)	4.42 (4.05-4.87)	5.23 (4.77-5.75)	6.43 (5.82-7.04)	7.46 (6.70-8.16)	8.59 (7.66-9.38)	9.85 (8.68-10.7)	11.7 (10.2-12.8)	13.3 (11.4-14.6)
3-day	3.03 (2.79-3.33)	3.66 (3.38-4.02)	4.66 (4.29-5.12)	5.51 (5.05-6.04)	6.78 (6.17-7.40)	7.87 (7.11-8.58)	9.08 (8.14-9.88)	10.4 (9.24-11.3)	12.4 (10.9-13.5)	14.2 (12.2-15.4)
4-day	3.20 (2.95-3.49)	3.86 (3.57-4.22)	4.91 (4.53-5.36)	5.80 (5.33-6.33)	7.13 (6.51-7.76)	8.29 (7.52-9.01)	9.57 (8.61-10.4)	11.0 (9.80-11.9)	13.1 (11.5-14.3)	15.0 (13.0-16.3)
7-day	3.76 (3.48-4.09)	4.52 (4.19-4.92)	5.68 (5.26-6.19)	6.68 (6.16-7.26)	8.15 (7.47-8.85)	9.43 (8.59-10.2)	10.8 (9.79-11.7)	12.4 (11.1-13.4)	14.7 (13.0-15.9)	16.7 (14.6-18.1)
10-day	4.30 (4.01-4.65)	5.16 (4.82-5.58)	6.42 (5.97-6.93)	7.46 (6.92-8.04)	8.97 (8.28-9.66)	10.2 (9.40-11.0)	11.6 (10.6-12.5)	13.1 (11.8-14.1)	15.2 (13.6-16.4)	17.0 (15.1-18.4)
20-day	5.86 (5.52-6.25)	6.97 (6.56-7.43)	8.39 (7.89-8.95)	9.54 (8.96-10.2)	11.2 (10.4-11.9)	12.4 (11.6-13.3)	13.8 (12.8-14.7)	15.2 (14.0-16.2)	17.2 (15.7-18.3)	18.7 (17.0-20.0)
30-day	7.25 (6.86-7.69)	8.57 (8.10-9.10)	10.1 (9.58-10.8)	11.4 (10.8-12.1)	13.2 (12.4-13.9)	14.5 (13.6-15.4)	16.0 (14.9-16.9)	17.4 (16.2-18.5)	19.4 (17.9-20.9)	20.9 (19.2-22.3)
45-day	9.14 (8.69-9.62)	10.8 (10.2-11.3)	12.5 (11.9-13.2)	13.9 (13.2-14.6)	15.7 (14.9-16.5)	17.0 (16.1-17.9)	18.4 (17.4-19.3)	19.7 (18.6-20.7)	21.4 (20.1-22.6)	22.7 (21.2-24.0)
60-day	10.9 (10.4-11.5)	12.8 (12.3-13.5)	14.8 (14.1-15.5)	16.3 (15.5-17.1)	18.2 (17.3-19.1)	19.6 (18.6-20.6)	21.0 (19.9-22.0)	22.3 (21.1-23.4)	24.0 (22.6-25.2)	25.2 (23.7-26.6)

¹ Precipitation frequency (PF) estimates in this table are based on frequency analysis of partial duration series (PDS).
Numbers in parenthesis are PF estimates at lower and upper bounds of the 90% confidence interval. The probability that precipitation frequency estimates (for a given duration and average recurrence interval) will be greater than the upper bound (or less than the lower bound) is 5%. Estimates at upper bounds are not checked against probable maximum precipitation (PMP) estimates and may be higher than currently valid PMP values.
Please refer to NOAA Atlas 14 document for more information.

[Back to Top](#)

PF graphical

WHAT CAUSES URBAN FLOODING

By Councilman Bruce Haigh, PE LTC US Army (Ret.) Public Works Committee

On July 14, 2025 Mount Joy Borough experienced a 6 hour precipitation event that stalled over the Borough and dumped 7.30" of rain onto an antiquated stormwater collection system. This storm event according to the National Weather Service was an approximate 500 - 1,000 year event with a probability of occurring in any one year between 0.5% to 0.1%.



Photo by: Councilman Bruce Haigh
Florin Avenue and School Lane
July 14, 2025

In this modern day of sending rockets to Mars how could this happen and how do we fix it? Prior to the Federal Clean Water Act of 1972 there was no regulations regarding Municipal stormwater. The PA Clean Stream Act of 1937 only regulated pollutants. It was a common practice prior to 1972 to mix stormwater with sanitary waste. The old saying "The solution to Pollution is Dilution." Many older section of the Borough have no stormwater collection system and all runoff is surface flow in the streets, alleys, and back yards. In 1978 Pennsylvania passed the PA Stormwater Management Act (Act 167) and Pennsylvania started managing peak rate runoff but not runoff volume. Act 167 generally only applied to new construction. In the past detention basins were designed to contain the 100-year/24-hour storm event, probability of occurring in any one year of 1% but stormwater collection systems were required to manage the 25-year/24-hour storm event, probability of occurring in any one year of 4%. Mount Joy Borough Council enacted a Stormwater Management Ordinance in January 1989 to comply with Act 167 and the Borough has updated its Stormwater Management Ordinance each time Lancaster County has updated their Act 167 Plan. The Borough last updated our Stormwater Management Ordinance in 2014 to place additional emphasis on "discarding" stormwater by infiltration or reuse. There are no Federal, State, County or Municipal requirements to manage flash flooding such as occurred on July 14, 2025, nor would it be possible for the Borough to mitigate flash flood events.

Recent history since Hurricane Lee in 2011 has demonstrated that the probability of the 100-year storm event occurring in any given year is no longer 1% but much higher. Recent history in 2018 and 2025 has demonstrated that higher storm events tend to stall over the Borough and thus we experience relatively short duration time wise but heavy down pour storm event that over charge the stormwater collection system. For a one quarter to one third acre residential property the runoff volume from the 25-year storm event is approximately 27,000-30,000 gallons. For that same residential property, the runoff volume from the 100-year storm event is 40,000 – 50,000 gallons. This additional runoff volume per average residential lot is equivalent to an average residential swimming pool dumping in your street.

Up sizing the entire Borough stormwater collection system and all the stormwater management facilities is not practical. Upsizing a single section of the stormwater collection system only passes the flooding issue down conveyance to some other person's property.

cont...

There are public policy decisions and engineering strategies that in the past have proven successful in minimizing/attenuating this excess runoff between the 25-year runoff volume (~4.00") and the 100-year runoff volume (5.90"). The first strategy is "flood proofing". Property owners cannot easily raise the first floor elevation of a structure but they can flood proof basement window wells with window well extenders and sealed window well covers, extend downspouts and sump pump discharges away from the structure and in many instances regrade, install berms and drainage swales to channel stormwater away from the structure. The second strategy is to "discard" a portion of the existing runoff volume through infiltration, bio swales, reuse, and wetlands. This will provide additional capacity within the stormwater conveyance system for the higher storm events. The third strategy is "temporary storage" of the excess runoff prior to conveyance to the designed existing stormwater management facility. This temporary storage could be as simple as a raised curb on a street, a berm in a recreational facility or an underground storage facility with pump out. The fourth strategy is additional "permanent storage" with controlled gravity release. The fifth strategy is "bypass or intentional flooding" of parking lots, undeveloped parcels or recreation facilities where there would be minimal property damage.

The challenges are immense with legal and financial constraints. In April of this year the Public Works Committee started development of a Five-Year Stormwater Management Plan. That action has been accelerated by the July 14th storm event. The Borough is seeking your help in identifying all the problem areas in the Borough and what criteria should be used to prioritize the Borough's effort. Please provide you input to Brett Hamm, Borough Stormwater Officer at zoning@mountjoy.pa.org or (717) 653-6680.



FIRE DEPARTMENT MOUNT JOY UPDATES

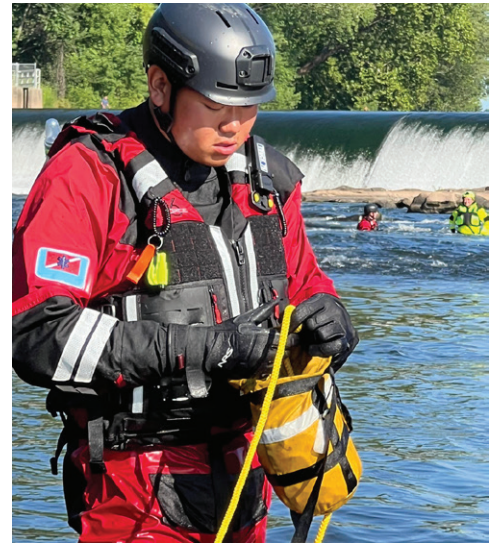
By Councilman Bill Hall

Ten members of the Fire Department Mount Joy (FDMJ) completed the Water Rescue and Emergency Response (WRER) course August 8-10, 2025. This intensive training, certified by the Pennsylvania Fish and Boat Commission, provided members with vital skills to safely and effectively respond to water emergencies.

The three-day program covered a range of water safety topics, including the proper use of personal protective equipment, specialized water rescue tools, and shore-based rescue techniques. Participants also learned to assess hazards, communicate during incidents, and coordinate resources in challenging aquatic environments.

A key component of the course was a 100-yard swim test in a pool while wearing street clothes, simulating the physical demands of real-life emergencies. Members then moved to the Schuylkill River, where they took part in hands-on scenarios involving victim approach, reach and throw rescues, and team-based operations.

Upon completion of the WRER course, all ten members achieved certification at the Operations level of water rescue, officially recognized by the Pennsylvania Fish and Boat Commission. This training strengthens FDMJ's ability to respond to flooding events, swift-water incidents, and other aquatic emergencies, ensuring enhanced safety for the community. The department commends these members for their dedication to professional development and public service.



Photos by: Whitecap Water Rescue Training LLC
August 8-10, 2025



The FDMJ has launched its annual fund drive with a goal of raising \$200,000. Proceeds from the fund drive will enhance municipal contributions, allowing the department to provide advanced training, acquire state-of-the-art equipment, supply uniforms, and offer other benefits to its dedicated volunteer firefighters. These funds will ensure FDMJ remains prepared to respond to emergencies with skill, safety, and professionalism. In addition to financial support, FDMJ is always seeking new volunteers to join its ranks and serve the community. The department encourages residents and businesses to contribute and get involved, helping protect lives and property in Mount Joy and the surrounding area. Learn more at www.fdmj.com/join.

TRASH, RECYCLING AND YARD WASTE



CARDBOARD RECYCLING DUMPSTERS

Mount Joy Borough has two cardboard ONLY recycling dumpsters at the Parks Department Building, 134 North Market Avenue, and in the parking lot of Little Chiques Park on Park Avenue. There is a slot in each dumpster that you can slide the cardboard through. If anyone has questions or comments, please call the Borough Office.

COMMERCIAL, INDUSTRIAL, PUBLIC & MULTI-FAMILY RECYCLING REQUIREMENTS

Pennsylvania's Act 101 and Mount Joy Borough's Ordinance 487 requires all commercial, industrial, public (schools), community events and multi-family units to recycle. Act 101 also requires municipalities and counties to track and report "post-consumer" recyclables that have been collected and marketed such as clear & colored glass, aluminum, steel & bimetallic cans, corrugated cardboard, plastic, yard waste, leaves, tires and white goods.

Option one is to have your materials collected curbside by Mount Joy Borough's licensed hauler. You would pay a semi-annual bill directly to the Borough for refuse and recycling collection.

Option two is to opt out of the Borough's collection program and contract with a private hauler. Annual proof of collection is required with this option via an Annual Recycling Report that is mailed each January.

TRASH COLLECTION PROCEDURES & GUIDELINES

Collection can begin as early as 5 a.m. on your assigned pickup day. Basic service includes three 32-gallon refuse bags/cans. Each bag/can is limited to 30 lbs. Customers are asked to place trash/recycling containers at your pickup site the evening before your assigned day and should be removed promptly after 6 p.m. If your trash is missed, please do not remove it from your pickup site. Call the Borough office before 11 a.m. the next day at (717)-653-2300 and arrangements will be made to have it picked up.

Special Tags

- **Orange (extra bag tag) \$3 each:** for additional 32-gallon bas or cans, not weighing more than 30 lbs. each; unlimited weekly
- **Red (oversized items) \$5 each:** for refuse that will not fit into refuse containers; ex. small furniture, carpet, etc.; limit two per week
- **Kraft bags (yard waste excluding grass) \$0.50 each:** for woody waste only, shall not weigh more than 30 lbs.

2025/26 TRASH & RECYCLING COLLECTION CALENDAR

October						
S	M	T	W	T	F	S
			1	2	3	4
5	6	7	8	9	10	11
12	13	14	15	16	17	18
19	20	21	22	23	24	25
26	27	28	29	30	31	

November						
S	M	T	W	T	F	S
						1
2	3	4	5	6	7	8
9	10	11	12	13	14	15
16	17	18	19	20	21	22
23	24	25	26	27	28	29
30						

December						
S	M	T	W	T	F	S
	1	2	3	4	5	6
7	8	9	10	11	12	13
14	15	16	17	18	19	20
21	22	23	24	25	26	27
28	29	30	31			

January						
S	M	T	W	T	F	S
				1	2	3
4	5	6	7	8	9	10
11	12	13	14	15	16	17
18	19	20	21	22	23	24
25	26	27	28	29	30	31

February						
S	M	T	W	T	F	S
1	2	3	4	5	6	7
8	9	10	11	12	13	14
15	16	17	18	19	20	21
22	23	24	25	26	27	28

March						
S	M	T	W	T	F	S
1	2	3	4	5	6	7
8	9	10	11	12	13	14
15	16	17	18	19	20	21
22	23	24	25	26	27	28
29	30	31				

Woody Waste Collection White Goods & Tire Collection Christmas Tree Collection



CHRISTMAS TREE COLLECTION

Christmas tree collection will happen January 5, 6, and 7, 2026

WHITE GOODS & TIRE COLLECTION

October 27, 28, and 29

- **White Goods - \$12:** refrigerators, washers, dryers, stoves, air conditioners, dishwashers, freezers, hot water heaters, dehumidifiers, furnaces, microwaves, treadmills, etc.
- **Tires - \$5:** may be on or off the rim

Residents are asked to place these items at their regular trash collection site the evening before pickup. A special tag must be placed on each item to be disposed of. Tags may be purchased at the Borough Office, M-F, 7 AM–4 PM, or at the Milanof-Schock Library, 1184 Anderson Ferry Road, during their hours of operation. Tags **MUST** be purchased no later than 2 PM the day before your collection.

All items MUST be tagged for collection!

Protect Your Home & Family Smoke & Carbon Monoxide Alarms Save Lives

Smoke Alarms: Don't Disarm the Messenger

Why? 3 out of 5 home fire deaths happen in homes with no smoke alarms or alarms that don't work.

Types:

Ionization → Fast response to flaming fires (needs proper disposal).

Photoelectric → Best for smoldering fires.

Where to Install:

Outside every bedroom

Inside bedrooms with closed doors





On every level (including basements)

How to Install:

Wall: 6–12 inches below the ceiling

Ceiling: at least 6 inches from walls

Maintenance:

-  Test monthly
-  Replace batteries yearly (or when chirping)
-  Vacuum clean
-  Replace every 10 years



Carbon Monoxide (CO) Alarms: Guard Against the Silent Killer

Why? CO is colorless, odorless, and deadly. Alarms provide early warning so you can ventilate or evacuate.

Types:

Battery-operated (up to 10-year life)

AC-powered (with or without backup battery)

Lifespan: 2–5 years (newer models alert when replacement is needed).

Testing Tip: Test button checks battery/circuit, not the gas sensor.

✅ Quick Safety Checklist

- 🔔 Test alarms every month
- 🔋 Change batteries annually
- 🧼 Clean alarms regularly
- 🕒 Replace smoke alarms every 10 years
- 🕒 Replace CO alarms every 2–5 years

Take a few minutes this month to test your alarms.

A working smoke or CO alarm could save your life.

🏠 Keep Your Home Safe: Chimney Cleaning Matters

Chimney cleaning is a critical maintenance task that protects your family and keeps your heating system running efficiently.

🔄 How Often?

- ✅ Inspect & clean at least once a year — even if you rarely use your fireplace.

🚩 Signs Your Chimney Needs Cleaning

Creosote buildup (black, tar-like substance)
Smoky odors indoors
Poor draft (smoke not venting properly)
Slow-burning or struggling fires

👷♂️ Call the Professionals

Certified chimney sweeps use the right tools to safely remove creosote. They also check for cracks, blockages, or other structural issues.

⚠️ Safety First

Always wear protective gear if attempting light maintenance.
Never climb or work on a roof alone.

📄 Legal & Insurance Requirements

Many insurance companies require proof of annual chimney care to cover fire damage claims.

🌟 **Stay safe, stay warm, and prevent chimney fires — schedule your annual chimney cleaning today!**

Rechargeable Batteries are Causing Fires.

KEEP ALL BATTERIES OUT OF THE TRASH AND RECYCLING BINS!

We need the community's help! Rechargeable batteries containing metals such as lithium and nickel, can spark and explode when damaged. Fires in garbage trucks and processing facilities are on the rise. Help protect our employees, garbage collectors, property, and community.

Rechargeable batteries are found in many common household items including:

- Power Tools
- Toys
- Cellphones
- Laptops
- Watches
- Remote Controls
- Gaming Devices
- Electric Toothbrushes
- E-cigarettes and Vape Devices



Here's what to do:

- **Alkaline Batteries (single-use: AA, AAA, C, D):** Collect in a storage bag. Once full, time for disposal. Although not a fire risk, LCSWMA will properly dispose of alkaline batteries.
- **Rechargeable Batteries:** Don't store end-of-life batteries. Dispose of immediately.

FREE, Proper Disposal: LANCASTER COUNTY RESIDENTS:

- Bring batteries and cellphones to LCSWMA's QUICK, CONVENIENT, DRIVE-THRU Household Hazardous Waste Facility at 1299 Harrisburg Pike, Lancaster, PA, 17603, Mon—Fri, 7 AM—4 PM; Sat, 7—11 AM.
- Ask your trash collector if they take filled battery bags. If so, place on curb **BESIDE** trash. Bags are brought to LCSWMA.

To find battery drop-off locations near you, visit www.SafeBatteryDisposal.com. Participating retail collection points include: Home Depot, Lowes & Staples

Specialty Batteries:

- **E-bike Batteries:** Contact retailer or manufacturer for safe battery disposal options. Need assistance? Call LCSWMA at 717-397-9968.
- **Electric Vehicle Batteries:** Contact local automotive store or dealership for safe battery disposal options.

Remember to keep all batteries out of the trash and recycling!
For more information, visit www.SafeBatteryDisposal.com



COMPOST SITE



DIRECTIONS



From East Main Street:



Turn RIGHT onto South Barbara Street



Turn LEFT onto East Donegal Street



Turn RIGHT onto South Jacob Street



Follow South Jacob Street until you can go no further.



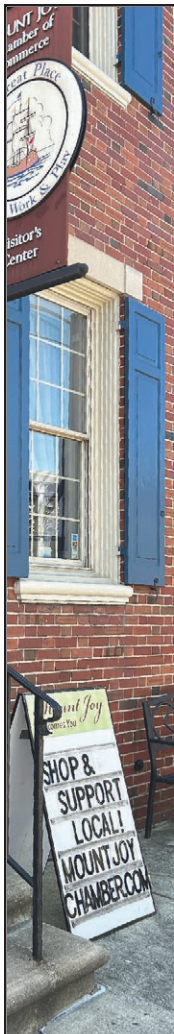
ARRIVE at the Compost Facility

MOUNT JOY BORO/EAST DONEGAL TOWNSHIP FACILITY REGULATIONS:

- The site accepts yard waste materials (sticks, branches, etc.).
- The following items will not be accepted: grass clippings, tree branches/trunks over 19 in diameter and/or over 8' in length, tree stumps, construction/demolition waste (boards, etc.).
- Yard waste is not required to be bagged, but if you prefer to do so, Kraft Bags can be purchased at the Borough Office at 21 East Main Street, Mount Joy, or at the Milanof-Schock Library, 1184 Anderson Ferry Road, Mount Joy.

SITE ACCESS

The Mount Joy Borough/East Donegal Township Compost Site is available to residents of both municipalities. Access to the facility will allow residents to drop off yard waste and woody waste and load up quality mulch and compost material. To gain access to the site, stop by the Mount Joy Borough Office to purchase a key fob. This site is available dawn to dusk, 365 days a year.



Get Involved!

Attend an Event

Business & Community Expo - September 29

Spooktacular - October 24

Visit with Santa - December 13

Mount Joy Minnie - February 2

Join us at the Milanof-Schock Library for these programs:
September 24: **Path to Coverage: Navigating Health Insurance Options** with David Kerlin, Lakeview Benefits
October 8: **Strength & Support: Resources for a Recovery Journey** with DSAA and Lancaster County Joining Forces for Children
November 17: **Ready, Set, Record: A Live Podcasting Launch** with Ask the Expert Kelly Johnson

Find details about these events and more at mountjoychamber.com

Events made possible by the members of the Mount Joy Area Chamber of Commerce.

Shop Local

When you shop local, you're not just making a purchase—you're investing in your community! Visit mountjoychamber.com to explore local businesses and what they have to offer.



[f](https://www.facebook.com/mountjoychamber) [i](https://www.instagram.com/mountjoychamber) [y](https://www.youtube.com/mountjoychamber) /mountjoychamber
mountjoychamber.com

62 East Main Street, Suite 1, Mount Joy
717-653-0773 | info@mountjoychamber.com



SHOVEL SMART

Warm up first: a quick stretch keeps you strong.

Grab the right shovel: light & sturdy is best.

Lift with your legs: push snow, don't twist your back.

Take breaks: slow and steady wins the (snow) race.

Drink water: yep, even in the cold!

**STAY SAFE.
STAY COZY.**



Sign up to receive alerts

POWERED BY:
RAVE
MOBILE SAFETY

Mount Joy Borough/
Authority is using a NEW
Emergency Alert System
called RAVE. Sign up now to
make sure you don't miss any
possible emergency
notifications.

Emergency alerts and notifications via

Phone call, text message, email and social media



UNUSED MEDICINE DISPOSAL



CVS Pharmacy provided us with a drop box for unwanted medication. The box is located inside the front lobby and is accessible anytime the Borough Offices are open to the public. Instructions are posted on top the box, and clear plastic baggies are provided for depositing medications.

- Medications **MUST** be dumped out of the original prescription bottle & put in a baggie.
- They may be mixed together with other medications.
- NO liquids, ointments, or creams. Pills & Capsules **ONLY**.
- DO NOT put prescriptions in the Borough Over Night Drop Box.
- Pills & Capsules in foil packs **MUST** be removed from the packets.



Stay in the know!
Follow
Mount Joy Borough
on Facebook!





What's New Downtown

October
24

Spooktacular
Mount Joy Chamber of
Commerce



October
31

**Mount Joy Borough
Trick-or-Treat**



November
15

Craft Show
The Faith Factory

November
29

Small Business Saturday



December
6

Winterfest



February
2

Mount Joy Minnie
Mount Joy Chamber of
Commerce

Mark your
calendars and
plan to come
join the fun!

*Events are subject to change without notice, so please contact event organizers for details and information.

EXTRA GIVE



LANCASTER COUNTY
COMMUNITY
FOUNDATION



HIGH
FOUNDATION

MURRY
FOUNDATION

November 21, 2025

www.ExtraGive.org

**When we give together,
our whole community
thrives—donate to your
favorite Mount Joy
nonprofit this
ExtraGive.**



Nonprofit Application Deadline

October 24th

www.extragive.org/registration



Milanof-Schock Library News & Updates

Library Hours

Mon–Thurs: 10 AM–8 PM | Sat: 9 AM–4 PM | Fri & Sun:
Closed

The Library is More Than Just Books!

DVDs • Programs for All Ages • Passport Services • Adult Clubs • Public Computers • Printing/Copying/Faxing • Audiobooks & E-books • Music & Magazines • Museum Passes • Early Learning Resources

Adult Clubs & Programs

Monthly clubs include: Game Night, Closely Knit, Easy Writer, Joyful Stitchers, Lit Lovers, Book Bingo, Make-It Monday, and Quilt Study. Check the website calendar for details.

Community Highlights

- Friends Book Sale Success – This June’s Annual Used Book Sale raised a record \$28,000 to support library services.
- Farewell to Miss Jan – After decades of service, Miss Jan retired in August. A community celebration was held in her honor, with Mayor Bradley proclaiming August 16, 2025 as “Jan Betty Day.” A tree will be planted at the library in her honor this fall.
- New Youth Services Team – Welcome to Laura Bear, Rachel Gable, Katelyn Schwab, and Alyssa Mackey. They will bring fresh programs and outreach opportunities to the community.

Supporting the Library

Public funding covers less than half of the library’s budget; the rest comes from community donations. Your contributions make a big difference!

- ExtraGive – Nov. 21: Donations on this date can have an even bigger impact.
- Give anytime at mslibrary.org/donate.

Stay Connected

Visit www.mslibrary.org or follow the Library on social media for the latest events, Fall/Winter Reading Challenges, and program updates.



MOUNT JOY ROTARY CELEBRATING 100 YEARS OF "SERVICE ABOVE SELF"



Service Projects

2000 Rotary's Town Clock
2010 Rotary Park
2015 Rebuild of Kids' Joy Land
2021 "Brave Heart" Repairing Hearts of
Children in Third World Countries
2023 New Flooring for Scout House
2023 Sponsored Cub Scout Pack 39
2024 Walk-In Freezer Friends of Donegal
2024 Ornaments for Town's Christmas
Tree, Hanging Banners & Holiday Stars ,
2026 Macha Water Project, Zambia, Africa

Veterans' Breakfast

The Gathering Place
6 Pine Street, Mount Joy

DATE: NOV. 11, 2025

TIME: 7:00 AM

Interested in Joining Rotary? We meet Tuesdays @ 12:15 PM or Thursday @ 5:30 PM
Call for details: President Joanne Pinkerton @ 717-653- 5911 or
Email :joanne@gatheringplacemj.com



LIONS CLUB OF MOUNT JOY

*Serving Mount Joy
—for over 80 Years—*



WE SERVE BY SUPPORTING...

Mount Joy Lions Swim Team
Milanof-Schock Library
Mount Joy Food Bank
RAISE28
Fire Department of Mount Joy
VisionCorps
Diabetes Awareness (ADA)
Beacon Lodge Camp
Mount Joy Winterfest
PA Breast Cancer Coalition
Leader Dog for the Blind

- ✓ Financial awards to Donegal High School and CTC graduates
- ✓ Vision screening for Donegal Kindergarten enrollees
- ✓ Collecting used eyeglasses
- ✓ Recycled benches made from collected plastic bags
- ✓ Taste of Mount Joy Cruisin' Cuisine

UPCOMING EVENTS

SATURDAY, OCT 11 | HOT DOG SALE
10am-2pm J.B. Hostetters & Sons

FRIDAY, OCT 24 | SPOOKTACULAR
5-8pm Main Street, Mount Joy

SATURDAY, NOV 1 | PANCAKE BREAKFAST
7-10am Trinity Lutheran Church

SATURDAY, DEC 5 | WINTERFEST
1-5pm Main Street, Mount Joy

BECOME A LION!

Meets first and third Tuesdays every month.
Membership is open to anyone interested in serving
our community!

Call Lion President, John Pepkowski at 267-663-1957
for more information, or join our Facebook page:
Mount Joy PA Lions Club.



Experience and Education Matter

When it comes to buying or selling your most valuable asset, please consider the Ferne Silberman Team for your real estate needs. We put professionalism and continuing education at the top of our values for our clients.



Our team has been recognized as top 2% in production for small teams nationwide in the BHHS franchise.

Attending and being involved in the state and national association of realtors is a priority. This keeps us current on all new regulations, change in forms, and legislative issues affecting our business.



**BERKSHIRE
HATHAWAY**
HomeServices

An Independently Owned and Operated Broker of BHHS

102 E. Main Street • Mount Joy PA 17552

717.653.2646

Licensed in the State of PA



FERNE SILBERMAN, CRS & SRES
Associate Broker, Team Leader

717.575.8626

fernesilberman@comcast.net

www.fernesilberman.com

PA License # AB068142

37 years experience & a lifetime resident

ROSE MADAR
Realtor, CRS & SRES

717.475.3885

Rmadar@homesale.com

www.roseknowsrealestate.com

PA License # RS342926

Top producer and lifetime resident of

KEITH GREENAWALT
Realtor

717.368.6881

kgreenawalt@homesale.com

PA License # RS310090

His engineering skills offer assistance to

REAL ESTATE REPRESENTATION “LIKE NO OTHER”!

YOUR HOME IS YOUR BIGGEST INVESTMENT, SO CALL ME BEFORE YOU DECIDE!

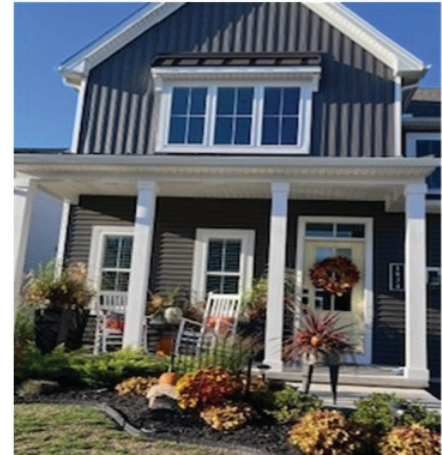
I AM HERE TO HELP YOU GET THE MORE EDUCATED & EXPERIENCED SERVICE
WHETHER YOU ARE SELLING OR BUYING!

PLEASE CALL ME TO GET THE BEST VALUE FOR SELLING YOUR HOME!

OR NEGOTIATING VALUE WHEN BUYING A HOME!

RESIDENTIAL HOMES, LUXURY HOMES, LAND, MULTI-UNITS, INVESTMENTS, RELOCATION, NEW CONSTRUCTION

MANY LOCAL LENDERS TO RECOMMEND FOR YOUR SPECIFIC NEEDS.....CONVENTIONAL. VA, FHA, USDA, ETC



KW ELITE
KELLERWILLIAMS®

5139 Main St., East Petersburg PA 17520

717-553-2500 (Call DIRECT 717-575-8289)

Each office is owned independently



Kim Sutter Eckels, Realtor

LUXURY HOMES, SRES, CRS, & Notary

717-575-8289 Direct **I WORK IN MY Mount Joy Home Office**

CALL OR EMAIL TO SCHEDULE AN APPT. kimsuttereckels@gmail.com



I DONATE TO KW CARES AND KW KIDS FROM EVERY TRANSACTION! HELP ME HELP OTHERS

Kwcares.org***kwkc/our-mission/

Borough of Mount Joy
21 East Main Street
Mount Joy, PA 17552

Presort Standard
ECRWSS
US Postage
PAID
Lancaster, PA
Permit#23

ECRWSS EDDM
Postal Customer

MEETING SCHEDULE

(All meetings are open to the public.)

- Borough Council meets the 1st Monday @ 7 PM.
- Borough Authority meets the 3rd Tuesday @ 4 PM.
- Borough Planning Commission meets the 2nd Wednesday @ 7 PM.
- Public Works Committee meets the 2nd Monday @ 6:30 PM.
- Admin/Finance Committee meets the 4th Thursday @ 6:30 PM.
- Public Safety Committee meets the 4th Monday @ 6:30 PM.
- Zoning Hearing Board meets the 4th Wednesday @ 7 PM .
- Borough Authority Finance Committee meets November 13th @ 10 AM.
- Borough Authority Admin. Committee meets October 22nd @ 10 AM.
- Civil Service Commission meets the 4th Monday, as needed @ 5:30 PM.
- Borough Council Budget meets on November 6th, 11th & 13th @ 6:30 PM.
- Borough Parks & Recreation Advisory Board meets the 2nd Tuesday @ 6:30 PM.

Follow us on Facebook @mountjoyborough for updates and changes.

BOROUGH OFFICIALS

Timothy Bradley, Jr., Mayor
William Hall, President
Mary Ginder, Councilor
Brian Youngerman, Councilor
Bruce Haigh, Councilor
David Eichler, President Pro-Tem
Philip Kark, Councilor
Lu Ann Fahndrich, Councilor
David Greineder, Vice President
Mitchell Scordo, Councilor

Mark Pugliese, Borough Manager/Secretary
Robert Goshen, Chief of Police
Dennis Nissley, Public Works Director

BOROUGH AUTHORITY MEMBERS

John D. Rebman, Chairman
Michael Melhorn
Paul Ruffini
Larry Derr
Chris Metzler

Scott Kapcsos, Authority Manager

BOROUGH OFFICE HOURS MONDAY-FRIDAY 7AM-4PM

You may contact the Borough office at (717) 653-2300 at any time to leave a message for a Borough Official or an Authority Board Member.

The Mount Joy Messenger is published by the Borough of Mount Joy and Mount Joy Borough Authority to provide information to the community concerning the Borough, the Authority, and nonprofit, nonpolitical organizations providing services in the community or working for the betterment of the community which do not limit their services on the basis of race, sex, religious affiliation, national origin or other similar classification. Nonprofit, nonpolitical organizations which provide services to residents of the community on nondiscriminatory basis or which promote the betterment of the community are permitted to submit articles describing their organization and services for inclusion in the Mount Joy Messenger. The inclusion of an article does not constitute an endorsement of the organization or philosophy stated in such article, and the Borough and the Authority make no representation as to the quality of the services of any organization. The Borough and the Authority reserve the right to reject any article submitted by any organization which does not provide services within the community, which is political in nature, which does not relate to services provided on a nondiscriminatory basis, which does not promote the betterment of the community or which limits its services on the basis of race, sex, religious affiliation, national origin or similar classification.